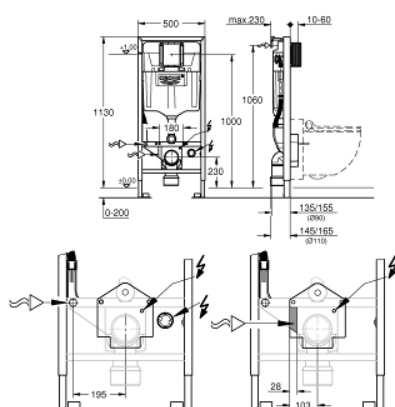


39 112 001 RAPID SL ELEMENT FOR GROHE SENSIA SHOWER WCS, 1.13 M INSTALLATION HEIGHT

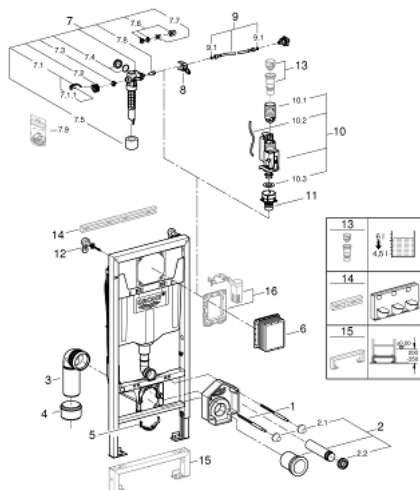


PRODUCT DESCRIPTION

- with flushing cistern GD 2, 6 l - 9 l
- with connections for GROHE Sensia shower toilets (GROHE Sensia IGS/GROHE Sensia Arena)
- for on-the-wall installations or studded walls
- powder coated steel frame, self-supporting
- with fixed connections
- TÜV approved
- 2 WC fixing bolts
- fixing device for ceramic
- distance of fixing bolts 180/230 mm
- PP outlet bend Ø 90 mm
- depth adjustable
- reducer Ø 90/110 mm
- inlet and outlet connecting set
- flushing cistern GD 2, 6 - 9 l, containing following features:
 - water supply required from the back
 - ½" water supply connection including integrated angle valve and push fit flexible hose union
- inspection shaft for vertical or horizontal use allows for flush plate to be installed vertically or horizontally.
- including wall brackets 38 558 00M for on-the-wall installation
- universal water connection for shower toilets Sensia Arena and Sensia IGS
- concealed socket for mains supply
- positioning help for electrical connection
- for mounting of small flush plates please order revision shaft 40 911 000 (sold separately)



39 112 001 **RAPID SL ELEMENT FOR GROHE SENSIA SHOWER WCS, 1.13 M INSTALLATION HEIGHT**



SPARE PARTS, September 2015 – now

- 1: Threaded bolt (Spare part-nr. 4276400M)
- 2: WC inlet and outlet connecting set (Spare part-nr. 37311K00)
- 2.1: Basin fastening (Spare part-nr. 43511SH0)
- 2.2: Connector (Spare part-nr. 37119000)
- 3: PP-outlet bend Ø 90 mm (Spare part-nr. 42327000)
- 4: 4" outlet adaptor for Rapid SL (Spare part-nr. 42242000)
- 5: Support for outlet bend (Spare part-nr. 42243000)
- 6: Inspection shaft (Spare part-nr. 66791000)
- 7: Filling valve (Spare part-nr. 37095000)
- 7.1: Lever (Spare part-nr. 43734000)
- 7.1.1: Sealing washer (Spare part-nr. 4377000M)
- 7.2: Valve head (Spare part-nr. 43536000)
- 7.3: Membrane (Spare part-nr. 4375800M)
- 7.4: Screw cap (Spare part-nr. 43735000)
- 7.5: Valve FLOAT, 5 pcs.. (Spare part-nr. 4379100M)
- 7.6: Set of seals (Spare part-nr. 43722000)*
- 8: Support device (Spare part-nr. 42246000)
- 9: Connecting hose (Spare part-nr. 42233000)
- 9.1: O-Ring (Spare part-nr. 0319100M)
- 10: Dual Flush discharge valve AV1 (Spare part-nr. 42320000)
- 10.1: Extension for overflow pipe (Spare part-nr. 42313000)
- 10.2: Pneumatic hose (Spare part-nr. 42319000)
- 10.3: Sealing washer (Spare part-nr. 42310000)
- 11: Valve seat for GD2 (Spare part-nr. 42315000)
- 12: Front wall brackets (Spare part-nr. 3855800M)
- 13: 4.5 l adapter for GD2 (Spare part-nr. 42333000)*
- 14: Element bar (Spare part-nr. 37310000)*
- 15: Flush pipe extension (Spare part-nr. 38629000)*
- 16: Dual flush valve set (Spare part-nr. 38796000)*

* Optional accessories