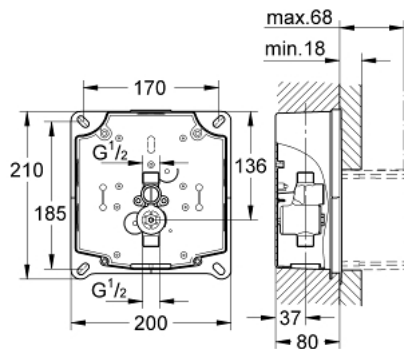


38 787 000 GROHE RAPIDO UMB



PRODUCT DESCRIPTION

- roughing-in set for urinal
- for manual actuation or Tectroninfra-red electronic 6 V
- water group with stop valve
- flow pressure min 0.5 bar
- operating pressure max 10 bar
- flush aid
- functional unit checked ex factory
- water supply connections ½" outer thread
- installation box with gasket
- fixing points for dry cladding and masonry-in
- inspection shaft incl. protection during construction phase



38 787 000 **GROHE RAPIDO UMB**

SPARE PARTS, September 2006 – now

1: Isolating valves, pair (Spare part-nr. 43392000)

2: Inspection shaft (Spare part-nr. 66838000)

