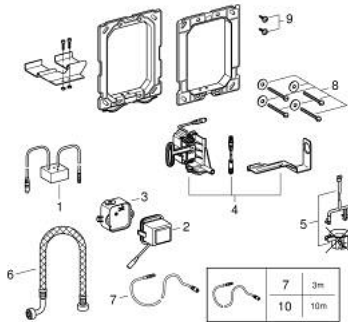


38 778 000 RADIO TRANSMITTER

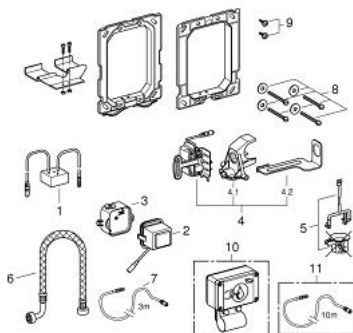


SPARE PARTS, May 2023 – now

- 1: Wireless receiver (Spare part-nr. 42336000)
- 2: Transformer (Spare part-nr. 42278000)
- 3: Transformer connecting box (Spare part-nr. 42279000)
- 4: Servo motor (Spare part-nr. 42612000)
- 5: Pop-up rod for servo motor (Spare part-nr. 43306000)
- 6: Hose (Spare part-nr. 43307000)
- 7: Extension cable (Spare part-nr. 36221000)
- 8: Fixing set (Spare part-nr. 4308500M)
- 9: Screw (Spare part-nr. 6636200M)
- 10: Extension cable (Spare part-nr. 36222000)*

* Optional accessories

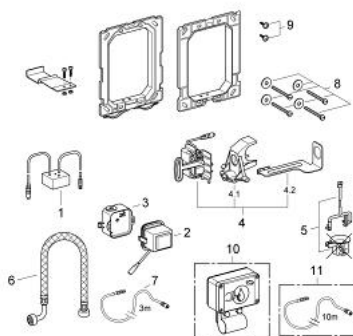
38 778 000 **RADIO TRANSMITTER**



SPARE PARTS, April 2016 – May 2023

- 1: Wireless receiver (Spare part-nr. 42336000)
- 2: Transformer (Spare part-nr. 42278000)
- 3: Transformer connecting box (Spare part-nr. 42279000)
- 4: Servo motor (Spare part-nr. 43281000)
- 4.1: Support device (Spare part-nr. 42246000)
- 4.2: Motor support device (Spare part-nr. 43617000)
- 5: Mounting set (Spare part-nr. 43306000)
- 6: Hose (Spare part-nr. 43307000)
- 7: Extension cable (Spare part-nr. 36221000)
- 8: Fixing set (Spare part-nr. 4308500M)
- 9: Screw (Spare part-nr. 6636200M)
- 10: Radar 868.4 MHz (Spare part-nr. 38758000)*
- 11: Extension cable (Spare part-nr. 36222000)*
- * Optional accessories

38 778 000 **RADIO TRANSMITTER**



SPARE PARTS, February 2008 – April 2016

- 1: Wireless receiver (Spare part-nr. 42336000)
- 2: Transformer (Spare part-nr. 42278000)
- 3: Transformer connecting box (Spare part-nr. 42279000)
- 4: Servo motor (Spare part-nr. 43281000)
- 4.1: Support device (Spare part-nr. 42246000)
- 4.2: Motor support device (Spare part-nr. 43617000)
- 5: Mounting set (Spare part-nr. 43306000)
- 6: Hose (Spare part-nr. 43307000)
- 7: Extension cable (Spare part-nr. 36221000)
- 8: Motor support device (Spare part-nr. 43617000)
- 8.1: Fixing set (Spare part-nr. 4308500M)
- 9: Screw (Spare part-nr. 6636200M)
- 10: Radar 868.4 MHz (Spare part-nr. 38758000)*
- 11: Extension cable (Spare part-nr. 36222000)*
- * Optional accessories