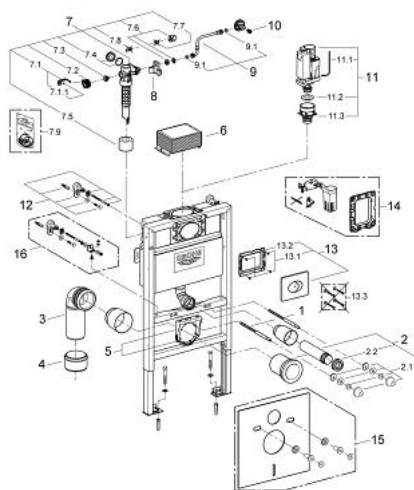


38 761 000 **RAPID SL 3-IN-1 SET FOR WC, 0.82 M INSTALLATION HEIGHT**

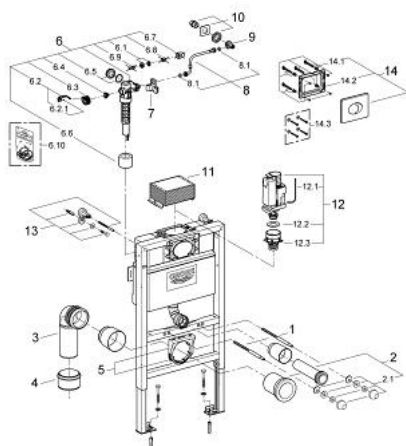


SPARE PARTS, February 2013 – now

- 1: Threaded bolt (Spare part-nr. 4276400M)
- 2: WC inlet and outlet connecting set (Spare part-nr. 37311K00)
- 2.1: Basin fastening (Spare part-nr. 43511SH0)
- 2.2: Connector (Spare part-nr. 37119000)
- 3: PP-outlet bend Ø 90 mm (Spare part-nr. 42327000)
- 4: 4" outlet adaptor for Rapid SL (Spare part-nr. 42242000)
- 5: Support for outlet bend (Spare part-nr. 42243000)
- 6: inspection shaft for flushing cistern (Spare part-nr. 42326000)
- 7: Filling valve (Spare part-nr. 37095000)
- 7.1: Lever (Spare part-nr. 43734000)
- 7.1.1: Sealing washer (Spare part-nr. 4377000M)
- 7.2: Valve head (Spare part-nr. 43536000)
- 7.3: Membrane (Spare part-nr. 4375800M)
- 7.4: Screw cap (Spare part-nr. 43735000)
- 7.5: Valve FLOAT, 5 pcs.. (Spare part-nr. 4379100M)
- 7.6: Set of seals (Spare part-nr. 43722000)*
- 8: Support device (Spare part-nr. 42195000)
- 9: Overflow Sleeve (Spare part-nr. 43325000)
- 9.1: O-Ring (Spare part-nr. 0319100M)
- 10: Headpart (Spare part-nr. 42385000)
- 11: Discharge valve AV1 complete (Spare part-nr. 42314000)
- 11.1: Pneumatic hose (Spare part-nr. 42319000)
- 11.2: Sealing washer (Spare part-nr. 42310000)
- 11.3: Valve seat for GD2 (Spare part-nr. 42315000)
- 12: Front wall brackets (Spare part-nr. 3855800M)
- 13: Flush plate (Spare part-nr. 38506000)
- 13.1: Screw (Spare part-nr. 6636200M)
- 13.2: Frame (Spare part-nr. 43207000)
- 13.3: Fixing set (Spare part-nr. 4308500M)*
- 13.4: Fixing set (Spare part-nr. 4215800M)*
- 14: Dual flush valve set (Spare part-nr. 38796000)*
- 15: Set for noise protection (Spare part-nr. 37131000)*
- 16: Xtra wall brackets, flexible placing (Spare part-nr. 38733000)*

* Optional accessories

38 761 000 **RAPID SL 3-IN-1 SET FOR WC, 0.82 M INSTALLATION HEIGHT**

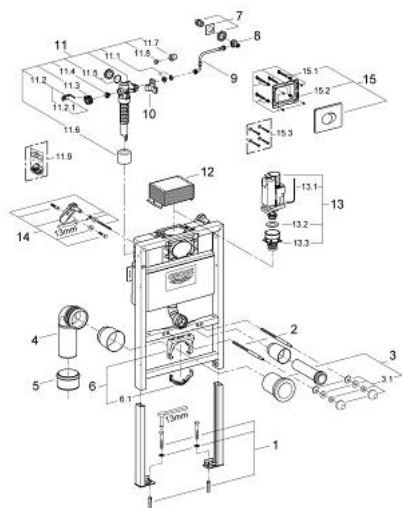


SPARE PARTS, October 2009 – February 2013

- 1: Threaded bolt (Spare part-nr. 4276400M)
- 2: WC inlet and outlet connecting set (Spare part-nr. 37311K00)
- 2.1: Basin fastening (Spare part-nr. 43511SH0)
- 2.2: Connector (Spare part-nr. 37119000)
- 3: PP-outlet bend Ø 90 mm (Spare part-nr. 42327000)
- 4: 4" outlet adaptor for Rapid SL (Spare part-nr. 42242000)
- 5: Support for outlet bend (Spare part-nr. 42243000)
- 6: Filling valve (Spare part-nr. 37095000)
- 6.1: Lever (Spare part-nr. 43734000)
- 6.1.1: Sealing washer (Spare part-nr. 4377000M)
- 6.2: Valve head (Spare part-nr. 43536000)
- 6.3: Membrane (Spare part-nr. 4375800M)
- 6.4: Screw cap (Spare part-nr. 43735000)
- 6.5: Valve FLOAT, 5 pcs.. (Spare part-nr. 4379100M)
- 6.6: Set of seals (Spare part-nr. 43722000)*
- 7: Support device (Spare part-nr. 42195000)
- 8: Overflow Sleeve (Spare part-nr. 43325000)
- 8.1: O-Ring (Spare part-nr. 0319100M)
- 9: Service valve pack 10 (Spare part-nr. 42235000)
- 10: water supply (Spare part-nr. 42234000)
- 11: inspection shaft for flushing cistern (Spare part-nr. 42326000)
- 12: Discharge valve AV1 complete (Spare part-nr. 42314000)
- 12.1: Pneumatic hose (Spare part-nr. 42319000)
- 12.2: Sealing washer (Spare part-nr. 42310000)
- 12.3: Valve seat for GD2 (Spare part-nr. 42315000)
- 13: Front wall brackets (Spare part-nr. 3855800M)
- 14: Flush plate (Spare part-nr. 38506000)
- 14.1: Screw (Spare part-nr. 6636200M)
- 14.2: Frame (Spare part-nr. 43207000)
- 14.3: Fixing set (Spare part-nr. 4308500M)*
- 14.4: Fixing set (Spare part-nr. 4215800M)*

* Optional accessories

38 761 000 **RAPID SL 3-IN-1 SET FOR WC, 0.82 M INSTALLATION HEIGHT**



SPARE PARTS, April 2007 – October 2009

- 1: Fixing set (Spare part-nr. 42757000)
- 2: Threaded bolt (Spare part-nr. 4276400M)
- 3: WC inlet and outlet connecting set (Spare part-nr. 37311K00)
- 3.1: Basin fastening (Spare part-nr. 43511SH0)
- 3.2: Connector (Spare part-nr. 37119000)
- 4: PP-outlet bend Ø 90 mm (Spare part-nr. 42327000)
- 5: 4" outlet adaptor for Rapid SL (Spare part-nr. 42242000)
- 6: Support for outlet bend (Spare part-nr. 42243000)
- 6.1: Hoop (Spare part-nr. 42949000)
- 7: water supply (Spare part-nr. 42234000)
- 8: Service valve pack 10 (Spare part-nr. 42235000)
- 9: Overflow Sleeve (Spare part-nr. 43325000)
- 9.1: O-Ring (Spare part-nr. 0319100M)
- 10: Support device (Spare part-nr. 42195000)
- 11: Filling valve (Spare part-nr. 37095000)
- 11.1: Lever (Spare part-nr. 43734000)
- 11.1.1: Sealing washer (Spare part-nr. 4377000M)
- 11.2: Valve head (Spare part-nr. 43536000)
- 11.3: Membrane (Spare part-nr. 4375800M)
- 11.4: Screw cap (Spare part-nr. 43735000)
- 11.5: Valve FLOAT, 5 pcs.. (Spare part-nr. 4379100M)
- 11.6: Set of seals (Spare part-nr. 43722000)*
- 12: inspection shaft for flushing cistern (Spare part-nr. 42326000)
- 13: Discharge valve AV1 complete (Spare part-nr. 42314000)
- 13.1: Pneumatic hose (Spare part-nr. 42319000)
- 13.2: Sealing washer (Spare part-nr. 42310000)
- 13.3: Valve seat for GD2 (Spare part-nr. 42315000)
- 14: Front wall brackets (Spare part-nr. 3855800M)
- 15: Flush plate (Spare part-nr. 38506000)
- 15.1: Screw (Spare part-nr. 6636200M)
- 15.2: Frame (Spare part-nr. 43207000)
- 15.3: Fixing set (Spare part-nr. 4308500M)*
- 15.4: Fixing set (Spare part-nr. 4215800M)*

* Optional accessories