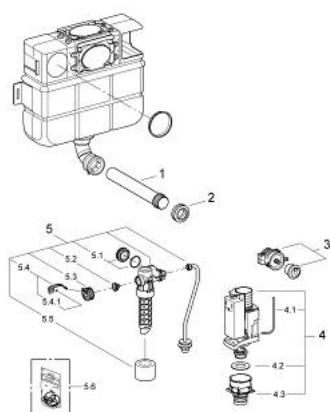


38 743 000 BATH FURNITURE CISTERN

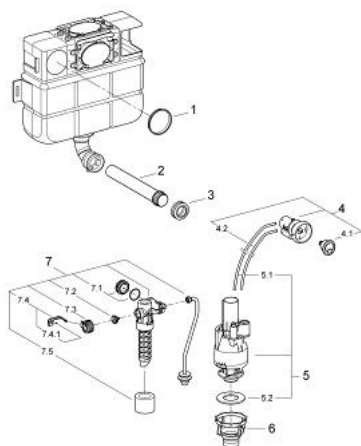


SPARE PARTS, July 2008 – now

- 1: Flush pipe 300 mm (Spare part-nr. 43352000)
- 2: Connector (Spare part-nr. 37119000)
- 3: Pneumatic push button actuation (Spare part-nr. 38771000)
- 3.1: Push button and escutcheon (Spare part-nr. 42311PI0)
- 3.2: Nipple (Spare part-nr. 4227100M)
- 3.3: Tubes (Spare part-nr. 42775000)
- 4: Discharge valve AV1 complete (Spare part-nr. 42314000)
- 4.1: Pneumatic hose (Spare part-nr. 42319000)
- 4.2: Sealing washer (Spare part-nr. 42310000)
- 4.3: Valve seat for GD2 (Spare part-nr. 42315000)
- 5: Filling valve with stand pipe (Spare part-nr. 42256000)
- 5.1: Screw cap (Spare part-nr. 43735000)
- 5.2: Membrane (Spare part-nr. 4375800M)
- 5.3: Valve head (Spare part-nr. 43536000)
- 5.4: Lever (Spare part-nr. 43734000)
- 5.4.1: Sealing washer (Spare part-nr. 4377000M)
- 5.5: Valve FLOAT, 5 pcs.. (Spare part-nr. 4379100M)
- 5.6: Set of seals (Spare part-nr. 43722000)*

* Optional accessories

38 743 000 BATH FURNITURE CISTERN



SPARE PARTS, October 2006 – July 2008

- 1: Protection plate (Spare part-nr. 42258000)
- 2: Flush pipe 300 mm (Spare part-nr. 43352000)
- 3: Connector (Spare part-nr. 37119000)
- 4: Air button (Spare part-nr. 38692PI0)
- 4.1: Button (Spare part-nr. 42204PI0)
- 4.2: Tubes (Spare part-nr. 42775000)
- 4.3: Nipple (Spare part-nr. 4227100M)
- 5: Dual Flush discharge valve (Spare part-nr. 42774000)
- 5.1: Tubes (Spare part-nr. 42775000)
- 5.2: Seal (Spare part-nr. 4285200M)
- 6: Valve seat (Spare part-nr. 42198000)
- 7: Filling valve with stand pipe (Spare part-nr. 42256000)
- 7.1: Screw cap (Spare part-nr. 43735000)
- 7.2: Membrane (Spare part-nr. 4375800M)
- 7.3: Valve head (Spare part-nr. 43536000)
- 7.4: Lever (Spare part-nr. 43734000)
- 7.4.1: Sealing washer (Spare part-nr. 4377000M)
- 7.5: Valve FLOAT, 5 pcs.. (Spare part-nr. 4379100M)
- 7.6: Set of seals (Spare part-nr. 43722000)*

* Optional accessories