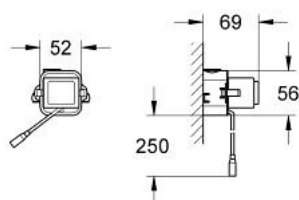
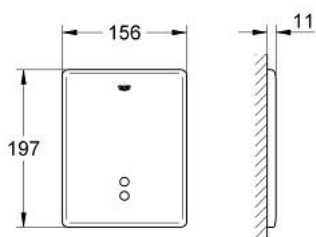


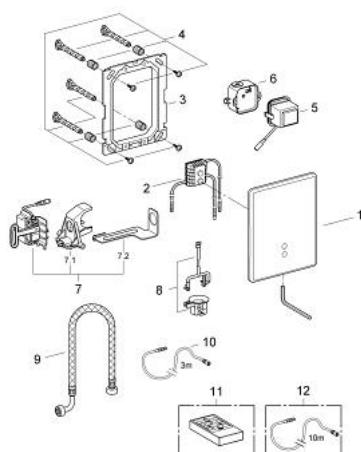
38 698 SD0 TECTRON SKATE INFRA-RED ACTUATION



PRODUCT DESCRIPTION

- Colour: stainless steel
- for flushing cistern GD 2 / Rapid SL 1.13 m only
- concealed installation
- CE approved
- front plate 156 x 197 mm
- infra-red control
- servo motor
- transformer for external installation
- supply voltage 230 V AC
- 50/60 Hz, 4,0 VA
- adjustable flow time
- with function check lamps
- adjustable by infra-red control 36 206
- GROHE Water Saving - Less water, perfect flow

38 698 SD0 TECTRON SKATE INFRA-RED ACTUATION



SPARE PARTS, February 2005 – now

- 1: Flush plate (Spare part-nr. 42191SD0)
- 2: Control unit for servomotor (Spare part-nr. 43279000)
- 3: Frame (Spare part-nr. 42736000)
- 4: Fixing set (Spare part-nr. 4215800M)
- 5: Transformer (Spare part-nr. 42278000)
- 6: Transformer connecting box (Spare part-nr. 42279000)
- 7: Servo motor (Spare part-nr. 43281000)
- 7.1: Support device (Spare part-nr. 42246000)
- 7.2: Motor support device (Spare part-nr. 43617000)
- 8: Mounting set (Spare part-nr. 43306000)
- 9: Hose (Spare part-nr. 43307000)
- 10: Extension cable (Spare part-nr. 36221000)
- 11: Infrared remote control (Spare part-nr. 36206000)*
- 12: Extension cable (Spare part-nr. 36222000)*

* Optional accessories