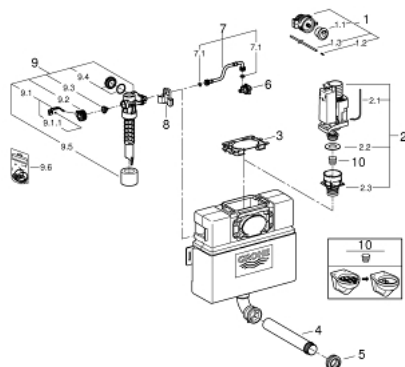


38 691 000 EAU2 WC FLUSHING CISTERN 0.82 M

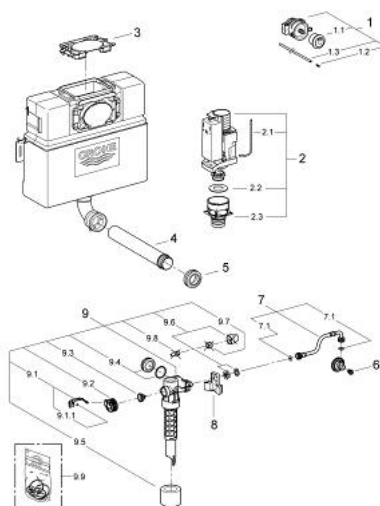


SPARE PARTS, October 2021 – now

- 1: Pneumatic push button actuation (Spare part-nr. 38771000)
- 1.1: Push button and escutcheon (Spare part-nr. 42311PI0)
- 1.2: Nipple (Spare part-nr. 4227100M)
- 1.3: Tubes (Spare part-nr. 42775000)
- 2: Discharge valve AV1 complete (Spare part-nr. 42314000)
- 2.1: Pneumatic hose (Spare part-nr. 42319000)
- 2.2: Sealing washer (Spare part-nr. 42310000)
- 2.3: Valve seat for GD2 (Spare part-nr. 42315000)
- 3: Protective plate (Spare part-nr. 42199000)
- 4: Flush pipe 300 mm (Spare part-nr. 43352000)
- 5: Connector (Spare part-nr. 37119000)
- 6: Water connection (Spare part-nr. 48561000)
- 7: Overflow Sleeve (Spare part-nr. 43325000)
- 7.1: O-Ring (Spare part-nr. 0319100M)
- 8: Support device (Spare part-nr. 42195000)
- 9: Filling valve (Spare part-nr. 37095000)
- 9.1: Lever (Spare part-nr. 43734000)
- 9.1.1: Sealing washer (Spare part-nr. 4377000M)
- 9.2: Valve head (Spare part-nr. 43536000)
- 9.3: Membrane (Spare part-nr. 4375800M)
- 9.4: Screw cap (Spare part-nr. 43735000)
- 9.5: Valve FLOAT, 5 pcs.. (Spare part-nr. 4379100M)
- 9.6: Set of seals (Spare part-nr. 43722000)*
- 10: Flow restrictor (Spare part-nr. 42300000)*

* Optional accessories

38 691 000 EAU2 WC FLUSHING CISTERN 0.82 M



SPARE PARTS, February 2011 – October 2021

1: Pneumatic push button actuation (Spare part-nr. 38771000)

1.1: Push button and escutcheon (Spare part-nr. 42311PI0)

1.2: Nipple (Spare part-nr. 4227100M)

1.3: Tubes (Spare part-nr. 42775000)

2: Discharge valve AV1 complete (Spare part-nr. 42314000)

2.1: Pneumatic hose (Spare part-nr. 42319000)

2.2: Sealing washer (Spare part-nr. 42310000)

2.3: Valve seat for GD2 (Spare part-nr. 42315000)

3: Protective plate (Spare part-nr. 42199000)

4: Flush pipe 300 mm (Spare part-nr. 43352000)

5: Connector (Spare part-nr. 37119000)

6: Headpart (Spare part-nr. 42385000)

7: Overflow Sleeve (Spare part-nr. 43325000)

7.1: O-Ring (Spare part-nr. 0319100M)

8: Support device (Spare part-nr. 42195000)

9: Filling valve (Spare part-nr. 37095000)

9.1: Lever (Spare part-nr. 43734000)

9.1.1: Sealing washer (Spare part-nr. 4377000M)

9.2: Valve head (Spare part-nr. 43536000)

9.3: Membrane (Spare part-nr. 4375800M)

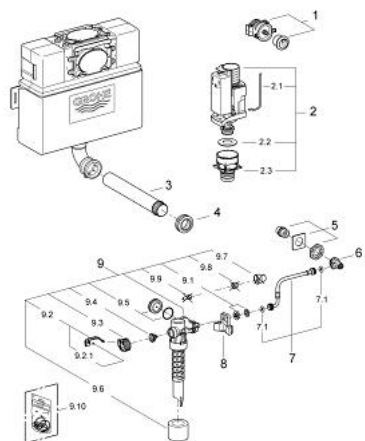
9.4: Screw cap (Spare part-nr. 43735000)

9.5: Valve FLOAT, 5 pcs.. (Spare part-nr. 4379100M)

9.6: Set of seals (Spare part-nr. 43722000)*

* Optional accessories

38 691 000 EAU2 WC FLUSHING CISTERN 0.82 M



SPARE PARTS, July 2008 – February 2011

1: Pneumatic push button actuation (Spare part-nr. 38771000)

1.1: Push button and escutcheon (Spare part-nr. 42311PI0)

1.2: Nipple (Spare part-nr. 4227100M)

1.3: Tubes (Spare part-nr. 42775000)

2: Discharge valve AV1 complete (Spare part-nr. 42314000)

2.1: Pneumatic hose (Spare part-nr. 42319000)

2.2: Sealing washer (Spare part-nr. 42310000)

2.3: Valve seat for GD2 (Spare part-nr. 42315000)

3: Flush pipe 300 mm (Spare part-nr. 43352000)

4: Connector (Spare part-nr. 37119000)

5: water supply (Spare part-nr. 42234000)

6: Service valve pack 10 (Spare part-nr. 42235000)

7: Overflow Sleeve (Spare part-nr. 43325000)

7.1: O-Ring (Spare part-nr. 0319100M)

8: Support device (Spare part-nr. 42195000)

9: Filling valve (Spare part-nr. 37095000)

9.1: Lever (Spare part-nr. 43734000)

9.1.1: Sealing washer (Spare part-nr. 4377000M)

9.2: Valve head (Spare part-nr. 43536000)

9.3: Membrane (Spare part-nr. 4375800M)

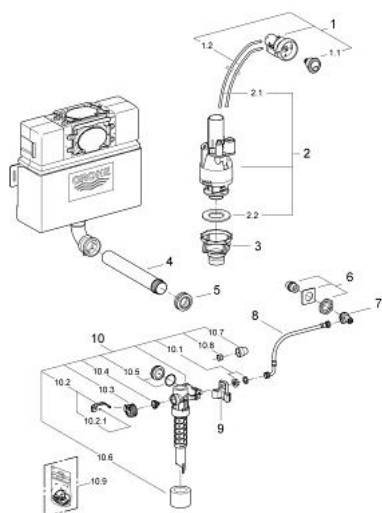
9.4: Screw cap (Spare part-nr. 43735000)

9.5: Valve FLOAT, 5 pcs.. (Spare part-nr. 4379100M)

9.6: Set of seals (Spare part-nr. 43722000)*

* Optional accessories

38 691 000 EAU2 WC FLUSHING CISTERN 0.82 M

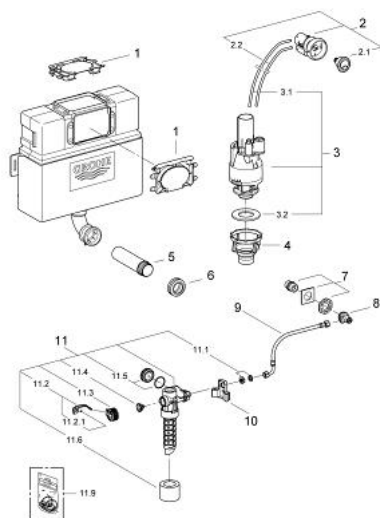


SPARE PARTS, August 2007 – July 2008

- 1: Air button (Spare part-nr. 38692PI0)
- 1.1: Button (Spare part-nr. 42204PI0)
- 1.2: Tubes (Spare part-nr. 42775000)
- 1.3: Nipple (Spare part-nr. 4227100M)
- 2: Dual Flush discharge valve (Spare part-nr. 42774000)
- 2.1: Tubes (Spare part-nr. 42775000)
- 2.2: Seal (Spare part-nr. 4285200M)
- 3: Valve seat (Spare part-nr. 42198000)
- 4: Flush pipe 300 mm (Spare part-nr. 43352000)
- 5: Connector (Spare part-nr. 37119000)
- 6: water supply (Spare part-nr. 42234000)
- 7: Service valve pack 10 (Spare part-nr. 42235000)
- 8: Overflow Sleeve (Spare part-nr. 43325000)
- 8.1: O-Ring (Spare part-nr. 0319100M)
- 9: Support device (Spare part-nr. 42195000)
- 10: Filling valve (Spare part-nr. 37095000)
- 10.1: Lever (Spare part-nr. 43734000)
- 10.1.1: Sealing washer (Spare part-nr. 4377000M)
- 10.2: Valve head (Spare part-nr. 43536000)
- 10.3: Membrane (Spare part-nr. 4375800M)
- 10.4: Screw cap (Spare part-nr. 43735000)
- 10.5: Valve FLOAT, 5 pcs.. (Spare part-nr. 4379100M)
- 10.6: Set of seals (Spare part-nr. 43722000)*

* Optional accessories

38 691 000 EAU2 WC FLUSHING CISTERN 0.82 M



SPARE PARTS, December 2004 – August 2007

- 1: Protective plate (Spare part-nr. 42199000)
- 2: Air button (Spare part-nr. 38692PI0)
- 2.1: Button (Spare part-nr. 42204PI0)
- 2.2: Tubes (Spare part-nr. 42775000)
- 2.3: Nipple (Spare part-nr. 4227100M)
- 3: Dual Flush discharge valve (Spare part-nr. 42774000)
- 3.1: Tubes (Spare part-nr. 42775000)
- 3.2: Seal (Spare part-nr. 4285200M)
- 4: Valve seat (Spare part-nr. 42198000)
- 5: Flush pipe extension (Spare part-nr. 42257000)
- 6: Connector (Spare part-nr. 37119000)
- 7: water supply (Spare part-nr. 42681000)
- 8: Service valve pack 10 (Spare part-nr. 42680000)
- 9: Connecting hose (Spare part-nr. 42206000)
- 10: Support device (Spare part-nr. 42195000)
- 11: Filling valve (Spare part-nr. 37095000)
- 11.1: Lever (Spare part-nr. 43734000)
- 11.1.1: Sealing washer (Spare part-nr. 4377000M)
- 11.2: Valve head (Spare part-nr. 43536000)
- 11.3: Membrane (Spare part-nr. 4375800M)
- 11.4: Screw cap (Spare part-nr. 43735000)
- 11.5: Valve FLOAT, 5 pcs.. (Spare part-nr. 4379100M)
- 11.6: Set of seals (Spare part-nr. 43722000)*

* Optional accessories