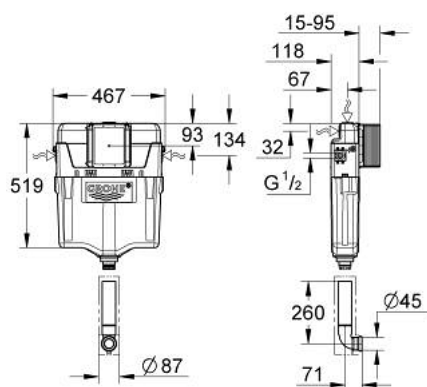


38 661 20A WC CONCEALED CISTERN

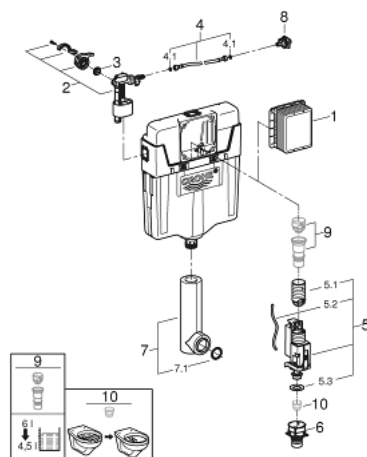


PRODUCT DESCRIPTION

- factory set 6 l and 3 l
- pneumatic discharge valve offering 2 modes of operation: dual flush or single flush
- connection from left/right/back or top
- Insulated against condensation
- ½" water supply connection including integrated angle valve and push fit flexible hose union
- inspection shaft for vertical or horizontal use allows for flush plate to be installed vertically or horizontally.
- flush pipe insulated against condensation
- fixing brackets
- for mounting of small flush plates please order revision shaft 40 911 000 (sold separately)
- Including WRAS approved filling valve



38 661 20A WC CONCEALED CISTERN



SPARE PARTS, December 2021 – now

- 1: Inspection shaft (Spare part-nr. 66783000)
- 2: Filling valve (Spare part-nr. 42648000)
- 3: Membrane (Spare part-nr. 4265000M)
- 4: Connecting hose (Spare part-nr. 42233000)
- 4.1: O-Ring (Spare part-nr. 0319100M)
- 5: Dual Flush discharge valve AV1 (Spare part-nr. 42320000)
- 5.1: Extension for overflow pipe (Spare part-nr. 42313000)
- 5.2: Pneumatic hose (Spare part-nr. 42319000)
- 5.3: Sealing washer (Spare part-nr. 42310000)
- 6: Valve seat (Spare part-nr. 42599000)
- 7: Flush pipe, concealed (Spare part-nr. 43908000)
- 7.1: O-Ring (Spare part-nr. 4388000M)
- 8: Water connection (Spare part-nr. 48561000)
- 9: 4.5 l adapter for GD2 (Spare part-nr. 42333000)*
- 10: Flow restrictor (Spare part-nr. 42300000)*

* Optional accessories