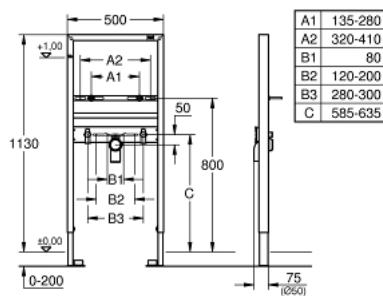


## 38 554 001 **RAPID SL ELEMENT FOR WASH BASIN, SINGLE HOLE INSTALLATION**



### PRODUCT DESCRIPTION

- with noise protection
- 1.13 m finished installation height
- for on-the-wall installations or studed walls
- Includes wash basin fixing bolts with fixing device for ceramic
- variable distance of fixing bolts
- HT-outlet bend Ø 50 mm
- seal Ø 32 mm
- 2 noise protected fitting connections ½"
- for on-the-wall installation please order wall brackets 38 558 00M (sold separately)



## 38 554 001 **RAPID SL ELEMENT FOR WASH BASIN, SINGLE HOLE INSTALLATION**

**SPARE PARTS**, August 2008 – now

- 1: Fitting connection (Spare part-nr. 42944000)
  - 2: Elbow 2" (Spare part-nr. 42943000)
  - 2.1: holder (Spare part-nr. 42236000)
  - 3: Threaded bolt (Spare part-nr. 42247000)
  - 4: Front wall brackets (Spare part-nr. 3855800M)\*
- \* Optional accessories

