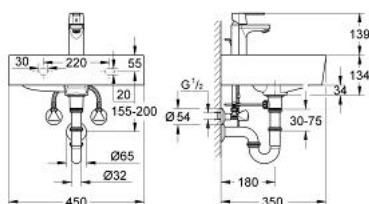


37 439 000 BUNDLE HAND WASH BASIN SQUARE 45



PRODUCT DESCRIPTION (1/2)

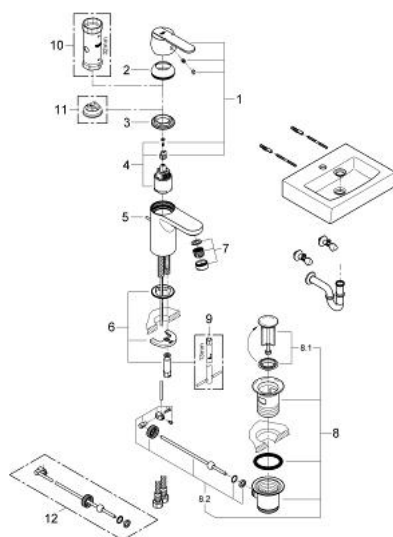
- Colour: Chrome
- Get single-lever basin mixer, 1/2" (32 883 000)
- monobloc installation
- GROHE SilkMove 35 mm ceramic cartridge
- GROHE Long-Life finish
- GROHE Water Saving - Less water, perfect flow
- adjustable flow rate limiter
- mousseur
- 5.7 l economy mousseur included
- pop-up waste set 1 1/4"
- flexible connection hoses
- GROHE FastFixation installation system
- noise classification 1 in accordance with DIN4109
- Hand wash basin square, EN 14688 CL 20
- sanitary ware
- 1 taphole in the middle; round overflow, placed on the opposite rim of basin
- brand: LIXIL
- dimensions: width 450 mm, depth 349 mm, total height 134 mm
- weight: 10 kg
- fixation: hanger bolts
- volume basin: 2.5 l
- Mounting set
- brand: TOX
- hanger bolts M10 x 140
- Angle valve 1/2" (22 939 000)
- TDL handle
- marking: neutral
- with compression nut

37 439 000 **BUNDLE HAND WASH BASIN SQUARE 45**

PRODUCT DESCRIPTION (2/2)

- for copper pipe Ø 10 mm
- escutcheon
- GROHE Long-Life finish
- Trap
- for basins
- wall connection
- escutcheon

37 439 000 BUNDLE HAND WASH BASIN SQUARE 45



SPARE PARTS, January 2013 – now

- 1: Lever (Spare part-nr. 46709000)
- 2: Shield for cross handle (Spare part-nr. 46492000)
- 3: Screw coupling (Spare part-nr. 46460000)
- 4: Cartridge (Spare part-nr. 46374000)
- 5: Pop-up rod (Spare part-nr. 46739000)
- 6: Shank mounting kit (Spare part-nr. 46671000)
- 7: Flow restrictor (Spare part-nr. 48159000)
- 8: Pop-up waste set 1 1/4" (Spare part-nr. 28910000)
- 8.1: Chrome bath plug (Spare part-nr. 07182000)
- 8.2: Eccentric rod (Spare part-nr. 07052000)
- 9: Mounting wrench (Spare part-nr. 19017000)*
- 10: Socket Spanner (Spare part-nr. 19332000)*
- 11: Temperature limiter (Spare part-nr. 46375000)*
- 12: Eccentric rod (Spare part-nr. 07341000)*

* Optional accessories