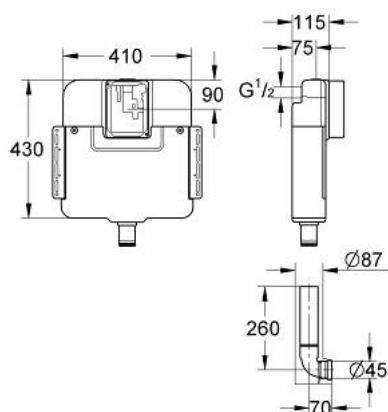


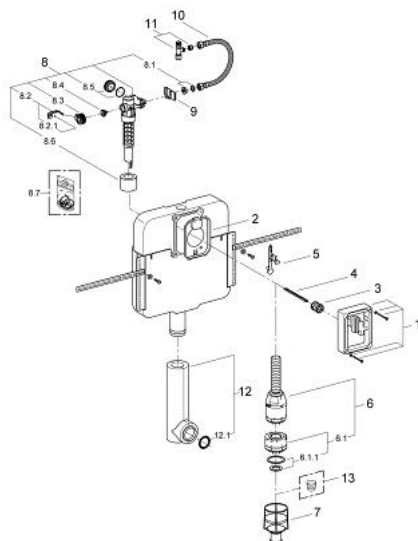
## 37 050 000 FLUSHING CISTERN FOR WC



### PRODUCT DESCRIPTION

- 6 l / 3 l flush
- concealed installation
- interruptible flush cycle
- made of PE
- connection from top or back
- low noise (group I acc. to German Noise Specification)
- Insulated against condensation
- 410 x 120 x 430 mm
- with isolation valve ½"
- fixing brackets
- flush pipe
- protecting block 45 mm
- without wall plate/actuation
- GROHE Water Saving - Less water, perfect flow

## 37 050 000 FLUSHING CISTERN FOR WC



### SPARE PARTS, November 2008 – now

- 1: Protection cap (Spare part-nr. 43944000)
  - 2: Protective plate (Spare part-nr. 43552000)
  - 3: Control Sleeve (Spare part-nr. 43547000)
  - 4: Actuation bolt (Spare part-nr. 43546000)
  - 5: Lever (Spare part-nr. 43550000)
  - 6: Servo discharge valve (Spare part-nr. 43486000)
  - 6.1: Outlet piston (Spare part-nr. 43544000)
  - 6.1.1: Sealing washer (Spare part-nr. 43808000)
  - 7: Valve seat (Spare part-nr. 43542000)
  - 8: Filling valve (Spare part-nr. 43537000)
  - 8.1: Dummy plug and escutcheon cap (Spare part-nr. 37125000)
  - 8.2: Lever (Spare part-nr. 43734000)
  - 8.2.1: Sealing washer (Spare part-nr. 4377000M)
  - 8.3: Valve head (Spare part-nr. 43536000)
  - 8.4: Membrane (Spare part-nr. 4375800M)
  - 8.5: Screw cap (Spare part-nr. 43735000)
  - 8.6: Valve FLOAT, 5 pcs.. (Spare part-nr. 4379100M)
  - 8.7: Throttle (Spare part-nr. 42356000)
  - 8.8: Set of seals (Spare part-nr. 43722000)\*
  - 9: Support device (Spare part-nr. 43551000)
  - 10: Hose (Spare part-nr. 43349000)
  - 11: Service valve pack 10 (Spare part-nr. 43821000)
  - 12: Flush pipe, concealed (Spare part-nr. 43908000)
  - 12.1: O-Ring (Spare part-nr. 4388000M)
  - 13: Flow restrictor (Spare part-nr. 42074000)
- \* Optional accessories