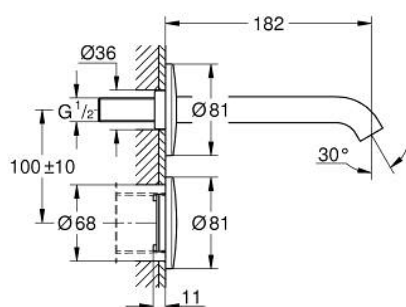
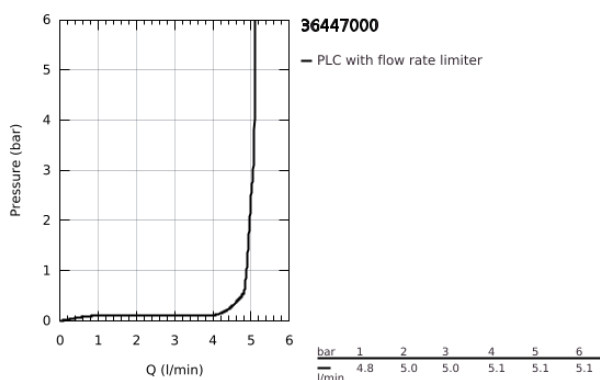


## 36 447 000 ESSENCE E INFRA-RED ELECTRONIC WALL BASIN TAP WITHOUT MIXING DEVICE

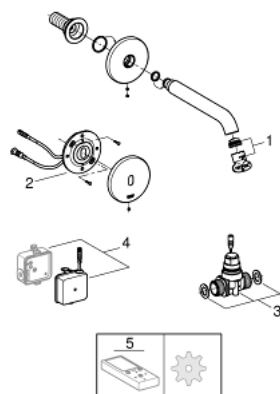


### PRODUCT DESCRIPTION

- Colour: Chrome
- with infrared sensor for bi-directional communication for monitoring, configuration and servicing
- for cold or premixed water
- with transformer 100-230 V AC, 50-60 Hz, 6 V DC
- GROHE Water Saving - Less water, perfect flow
- maximum flow rate (at 3 bar): 5 l/min
- 7 pre-set programs
- auto flush
- thermal disinfection
- cleaning mode
- additional functions and precise settings by remote control 36 407
- set for final installation
- for use with Rapid SL 38 748 002 or roughing-in set 36 264 001
- CE approved
- noise classification 1 in accordance with DIN4109



## 36 447 000 ESSENCE E INFRA-RED ELECTRONIC WALL BASIN TAP WITHOUT MIXING DEVICE



### SPARE PARTS, September 2016 – now

1: Flow straightener (Spare part-nr. 48376000)

2: Electronic (Spare part-nr. 42484000)

3: Solenoid Valve (Spare part-nr. 42740000)

4: Switching power supply (Spare part-nr. 42470000)

5: Remote control (Spare part-nr. 36407001)\*

\* Optional accessories