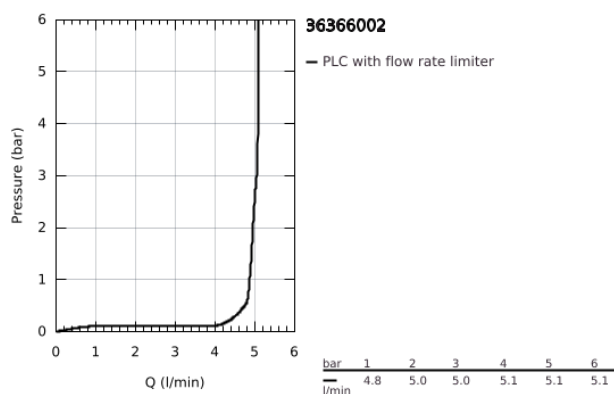
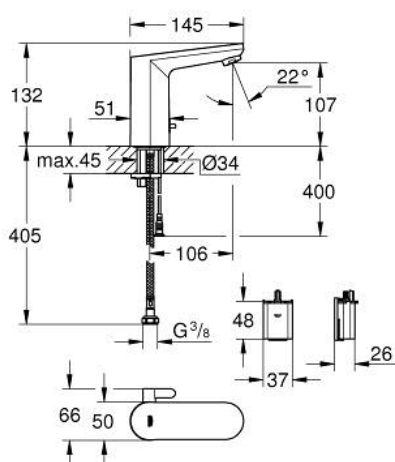


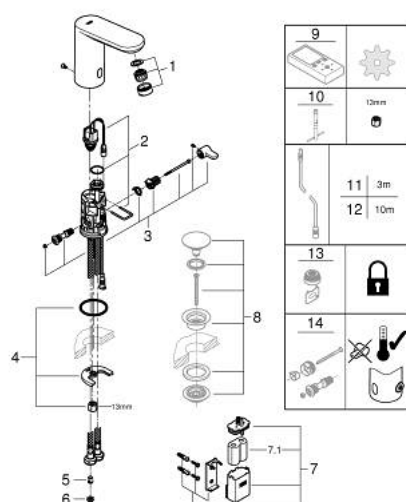
## 36 366 002 GET E INFRA-RED ELECTRONIC BASIN MIXER



### PRODUCT DESCRIPTION

- Colour: Chrome
- with infrared sensor for bi-directional communication for monitoring, configuration and servicing
- monobloc installation
- 6V lithium battery, type CR-P2
- battery lifetime approx. 7 years (150 actuations a day)
- multistage battery status display
- mixing device with adjustable hot water limiter
- with integrated solenoid valve
- external battery
- GROHE Water Saving mousseur 5.7 l/min
- dirt strainers
- flexible connection hoses
- non-return valve
- rapid installation system
- 7 pre-set programs
- auto flush
- thermal disinfection
- cleaning mode
- additional functions and precise settings by remote control 36 407
- noise classification 1 in accordance with DIN4109
- type of protection faucet IP 59
- CE approved
- min. recommended pressure 1.0 bar

## 36 366 002 GET E INFRA-RED ELECTRONIC BASIN MIXER



### SPARE PARTS, August 2020 – now

- 1: Flow restrictor (Spare part-nr. 48159000)
- 2: Solenoid valve (Spare part-nr. 42479000)
- 3: mixer spindle + lever (Spare part-nr. 42623000)
- 4: Shank mounting kit (Spare part-nr. 46249000)
- 5: Non-return valve (Spare part-nr. 4257200M)
- 6: Filter (Spare part-nr. 4241300M)
- 7: Battery Housing (Spare part-nr. 42393000)
- 7.1: Battery (Spare part-nr. 42886000)
- 8: Waste set with push-open plug (Spare part-nr. 65807000)\*
- 9: Remote control (Spare part-nr. 36407001)\*
- 10: Mounting wrench (Spare part-nr. 19017000)\*
- 11: Power extension cable (Spare part-nr. 36340000)\*
- 12: Power extension cable (Spare part-nr. 36341000)\*
- 13: Flow restrictor (Spare part-nr. 36133000)\*
- 14: cap (Spare part-nr. 42624000)\*

\* Optional accessories