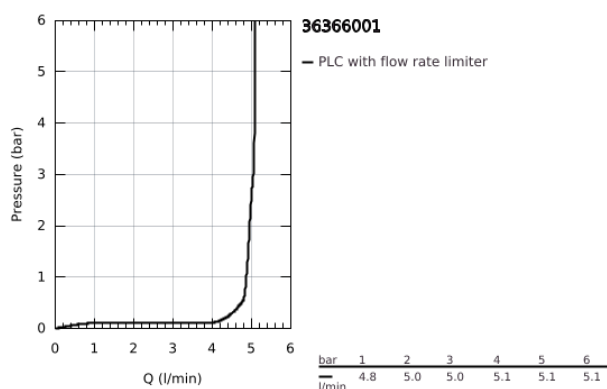
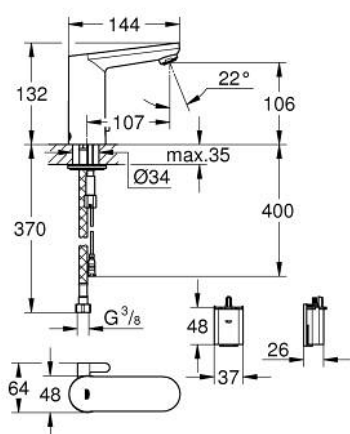


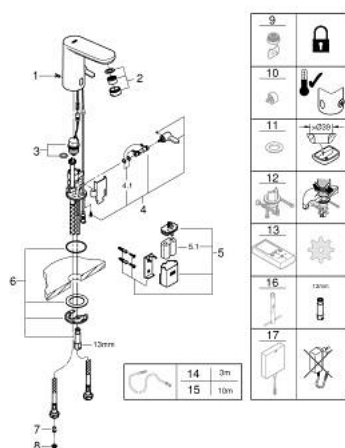
36 366 001 **GET E INFRA-RED ELECTRONIC BASIN MIXER**



PRODUCT DESCRIPTION

- Colour: Chrome
- with infrared sensor for bi-directional communication for monitoring, configuration and servicing
- monobloc installation
- 6V lithium battery, type CR-P2
- battery lifetime approx. 7 years (150 actuations a day)
- multistage battery status display
- mixing device with adjustable hot water limiter
- with integrated solenoid valve
- external battery
- GROHE Water Saving mousseur 5.7 l/min
- dirt strainers
- flexible connection hoses
- non-return valve
- rapid installation system
- 7 pre-set programs
- auto flush
- thermal disinfection
- cleaning mode
- additional functions and precise settings by remote control 36 407
- noise classification 1 in accordance with DIN4109
- type of protection faucet IP 59K
- CE approved
- min. recommended pressure 1.0 bar

36 366 001 GET E INFRA-RED ELECTRONIC BASIN MIXER



SPARE PARTS, June 2018 – now

- 1: Screw (Spare part-nr. 4283100M)
- 2: Flow restrictor (Spare part-nr. 48159000)
- 3: Solenoid valve (Spare part-nr. 42469000)
- 4: Mixing lever (Spare part-nr. 42401000)
- 4.1: O-Ring (Spare part-nr. 4284000M)
- 5: Battery Housing (Spare part-nr. 42393000)
- 5.1: Battery (Spare part-nr. 42886000)
- 6: Mounting set (Spare part-nr. 42400000)
- 7: Non-return valve (Spare part-nr. 4257200M)
- 8: Filter (Spare part-nr. 4241300M)
- 9: Flow restrictor (Spare part-nr. 36133000)*
- 10: Security cover cap (Spare part-nr. 42408000)*
- 11: Escutcheon (Spare part-nr. 36370000)*
- 12: Rotation lock (Spare part-nr. 36276000)*
- 13: Remote control (Spare part-nr. 36407001)*
- 14: Power extension cable (Spare part-nr. 36340000)*
- 15: Power extension cable (Spare part-nr. 36341000)*
- 16: Mounting wrench (Spare part-nr. 19017000)*
- 17: Switch mode power supply (Spare part-nr. 36338000)*

* Optional accessories