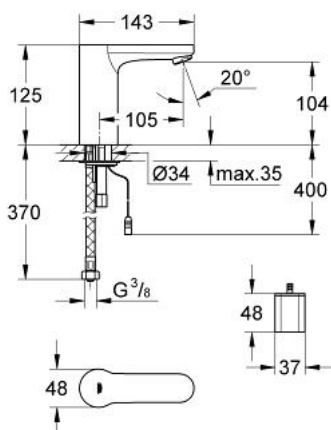


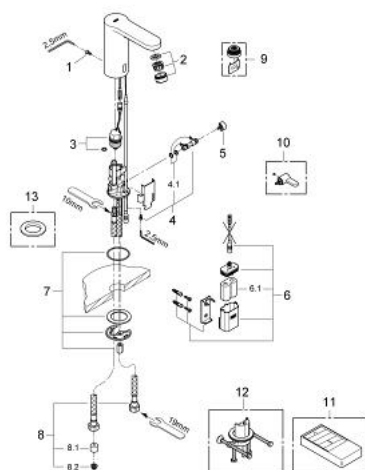
36 330 000 EUROSMART COSMOPOLITAN E INFRA-RED ELECTRONIC BASIN MIXER WITH HIDDEN MIXING DEVICE AND ADJUSTABLE TEMPERATURE LIMITER



PRODUCT DESCRIPTION

- Colour: Chrome
- 6V lithium battery, type CR-P2
- monobloc installation
- multistage battery status display
- with integrated solenoid valve
- external battery
- mixing device with adjustable hot water limiter
- rapid installation system
- 7 pre-set programs
- with 24/72 hours autoflush
- time or user dependent
- with cleaning mode
- safety stop after 60 sec.
- additional functions by remote control:
- adjustable flow time
- adjustment reflection range by remote
- activation of thermal disinfection for 3, 5 or 11 min by hand
- fixed build in static flow limiter on the hose connection
- GROHE Water Saving mousseur 5.7 l/min
- flexible connection hoses
- non-return valve
- dirt strainers
- noise classification 1 in accordance with DIN4109
- type of protection faucet IP 59K
- CE approved
- GROHE Water Saving - Less water, perfect flow
- GROHE Long-Life finish

36 330 000 EUROSMART COSMOPOLITAN E INFRA-RED ELECTRONIC BASIN MIXER WITH HIDDEN MIXING DEVICE AND ADJUSTABLE TEMPERATURE LIMITER



SPARE PARTS, August 2010 – now

- 1: Screw (Spare part-nr. 4283100M)
- 2: Flow restrictor (Spare part-nr. 42832000)
- 3: Solenoid valve (Spare part-nr. 42399000)
- 4: Mixer spindle (Spare part-nr. 42402000)
- 4.1: O-Ring (Spare part-nr. 4284000M)
- 5: Security cover cap (Spare part-nr. 42408000)
- 6: Battery Housing (Spare part-nr. 42393000)
- 6.1: Battery (Spare part-nr. 42886000)
- 7: Mounting set (Spare part-nr. 42400000)
- 8: Connection hose (Spare part-nr. 42403000)
- 8.1: Non-return valve (Spare part-nr. 4240400M)
- 8.2: Filter (Spare part-nr. 4241300M)
- 9: Flow restrictor (Spare part-nr. 36133000)*
- 10: Mixing lever (Spare part-nr. 42401000)*
- 11: Infrared remote control (Spare part-nr. 36206000)*
- 12: Rotation lock (Spare part-nr. 36276000)*
- 13: Escutcheon (Spare part-nr. 36370000)*

* Optional accessories