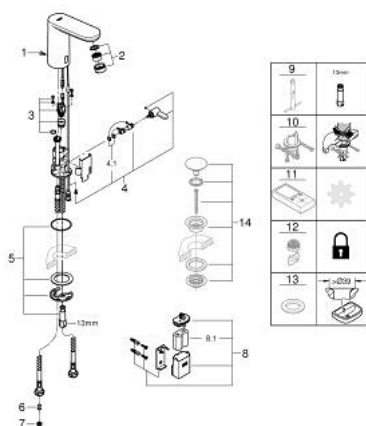


36 327 001 EUROSMART COSMOPOLITAN E INFRA-RED ELECTRONIC BASIN MIXER 1/2" WITH MIXING DEVICE AND ADJUSTABLE TEMPERATURE LIMITER

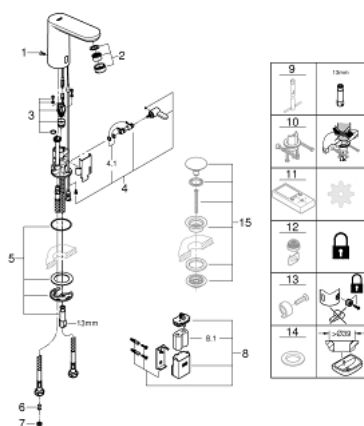


SPARE PARTS, May 2023 – now

- 1: Screw (Spare part-nr. 4283100M)
- 2: Flow restrictor (Spare part-nr. 48159000)
- 3: Solenoid valve (Spare part-nr. 42479000)
- 4: Mixing lever (Spare part-nr. 42401000)
- 4.1: O-Ring (Spare part-nr. 4284000M)
- 5: Mounting set (Spare part-nr. 42400000)
- 6: Non-return valve (Spare part-nr. 4257200M)
- 7: Filter (Spare part-nr. 4241300M)
- 8: Battery Housing (Spare part-nr. 42393000)
- 8.1: Battery (Spare part-nr. 42886000)
- 9: Mounting wrench (Spare part-nr. 19017000)*
- 10: Rotation lock (Spare part-nr. 36276000)*
- 11: Remote control (Spare part-nr. 36407001)*
- 12: Flow restrictor (Spare part-nr. 36133000)*
- 13: Escutcheon (Spare part-nr. 36370000)*
- 14: Waste set with push-open plug (Spare part-nr. 65807000)*

* Optional accessories

36 327 001 EUROSART COSMOPOLITAN E INFRA-RED ELECTRONIC BASIN MIXER 1/2" WITH MIXING DEVICE AND ADJUSTABLE TEMPERATURE LIMITER

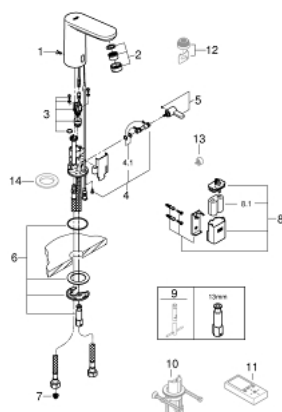


SPARE PARTS, March 2021 – May 2023

- 1: Screw (Spare part-nr. 4283100M)
- 2: Flow restrictor (Spare part-nr. 48159000)
- 3: Solenoid valve (Spare part-nr. 42479000)
- 4: Mixing lever (Spare part-nr. 42401000)
- 4.1: O-Ring (Spare part-nr. 4284000M)
- 5: Mounting set (Spare part-nr. 42400000)
- 6: Non-return valve (Spare part-nr. 4257200M)
- 7: Filter (Spare part-nr. 4241300M)
- 8: Battery Housing (Spare part-nr. 42393000)
- 8.1: Battery (Spare part-nr. 42886000)
- 9: Mounting wrench (Spare part-nr. 19017000)*
- 10: Rotation lock (Spare part-nr. 36276000)*
- 11: Remote control (Spare part-nr. 36407001)*
- 12: Flow restrictor (Spare part-nr. 36133000)*
- 13: Security cover cap (Spare part-nr. 42408000)*
- 14: Escutcheon (Spare part-nr. 36370000)*
- 15: Waste set with push-open plug (Spare part-nr. 65807000)*

* Optional accessories

36 327 001 EUROSMART COSMOPOLITAN E INFRA-RED ELECTRONIC BASIN MIXER 1/2" WITH MIXING DEVICE AND ADJUSTABLE TEMPERATURE LIMITER

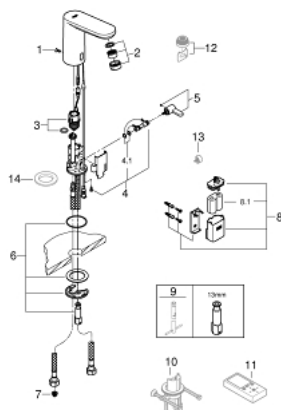


SPARE PARTS, December 2016 – March 2021

- 1: Screw (Spare part-nr. 4283100M)
- 2: Flow restrictor (Spare part-nr. 48159000)
- 3: Solenoid valve (Spare part-nr. 42479000)
- 4: Mixer spindle (Spare part-nr. 42402000)
- 4.1: O-Ring (Spare part-nr. 4284000M)
- 5: Mixing lever (Spare part-nr. 42401000)
- 5.1: O-Ring (Spare part-nr. 4284000M)
- 6: Mounting set (Spare part-nr. 42400000)
- 7: Filter (Spare part-nr. 4241300M)
- 8: Battery Housing (Spare part-nr. 42393000)
- 8.1: Battery (Spare part-nr. 42886000)
- 9: Mounting wrench (Spare part-nr. 19017000)*
- 10: Rotation lock (Spare part-nr. 36276000)*
- 11: Remote control (Spare part-nr. 36407001)*
- 12: Flow restrictor (Spare part-nr. 36133000)*
- 13: Security cover cap (Spare part-nr. 42408000)*
- 14: Escutcheon (Spare part-nr. 36370000)*

* Optional accessories

36 327 001 EUROSMART COSMOPOLITAN E INFRA-RED ELECTRONIC BASIN MIXER 1/2" WITH MIXING DEVICE AND ADJUSTABLE TEMPERATURE LIMITER



SPARE PARTS, November 2013 – December 2016

- 1: Screw (Spare part-nr. 4283100M)
- 2: Flow restrictor (Spare part-nr. 48159000)
- 3: Solenoid valve (Spare part-nr. 42469000)
- 4: Mixer spindle (Spare part-nr. 42402000)
- 4.1: O-Ring (Spare part-nr. 4284000M)
- 5: Mixing lever (Spare part-nr. 42401000)
- 5.1: O-Ring (Spare part-nr. 4284000M)
- 6: Mounting set (Spare part-nr. 42400000)
- 7: Filter (Spare part-nr. 4241300M)
- 8: Battery Housing (Spare part-nr. 42393000)
- 8.1: Battery (Spare part-nr. 42886000)
- 9: Mounting wrench (Spare part-nr. 19017000)*
- 10: Rotation lock (Spare part-nr. 36276000)*
- 11: Remote control for all GROHE infra-red products (Spare part-nr. 36407000)*
- 12: Flow restrictor (Spare part-nr. 36133000)*
- 13: Security cover cap (Spare part-nr. 42408000)*
- 14: Escutcheon (Spare part-nr. 36370000)*

* Optional accessories