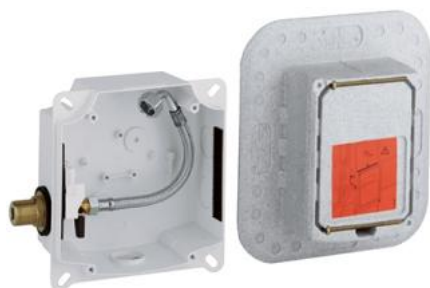
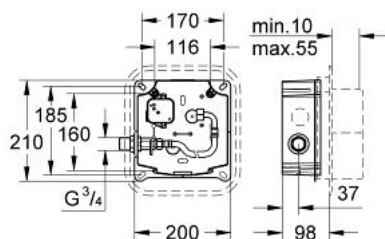


36 241 000 **EUROPLUS E CONCEALED MOUNTING BOX 1/2"**



## PRODUCT DESCRIPTION

- for installation with pre-mixed or cold water
- wall installation
- suitable for IR-sets for final installation
- 36 242 SD0
- 36 243 SD0
- stop valve
- flexible connection-/flush hose
- 230 V connecting plug



## 36 241 000 EUROPLUS E CONCEALED MOUNTING BOX 1/2"

### SPARE PARTS, January 2001 – now

- 1: Supply stop for warm water (Spare part-nr. 42116000)
- 2: Filter (Spare part-nr. 4212400M)
- 3: Connecting hose (Spare part-nr. 42117000)
- 3.1: Fibre seal dia. Ø 18,5 x Ø 12 x 2 (Spare part-nr. 0138900M)
- 4: plug-in connector (Spare part-nr. 42732000)
- 5: Fixing set (Spare part-nr. 4352800M)

