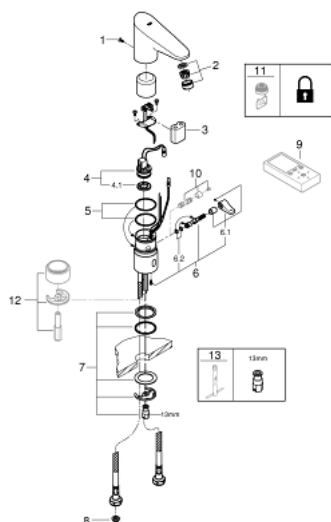


36 207 001 EUROPLUS E INFRA-RED ELECTRONIC BASIN MIXER 1/2" WITH MIXING DEVICE AND ADJUSTABLE TEMPERATURE LIMITER

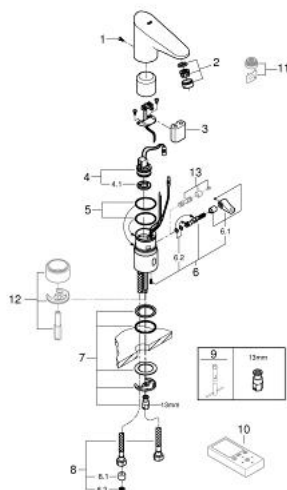


SPARE PARTS, June 2016 – now

- 1: Screw (Spare part-nr. 4283100M)
- 2: Flow restrictor (Spare part-nr. 48159000)
- 3: Battery (Spare part-nr. 42886000)
- 4: Solenoid valve (Spare part-nr. 42229000)
- 4.1: Filter (Spare part-nr. 42798000)
- 5: O-Ring (Spare part-nr. 4283600M)
- 6: Lever (Spare part-nr. 42839000)
- 6.1: Mixing lever (Spare part-nr. 42838000)
- 6.2: O-Ring (Spare part-nr. 4284000M)
- 7: Fixing set (Spare part-nr. 42841000)
- 8: Filter (Spare part-nr. 4241300M)
- 9: Remote control (Spare part-nr. 36407001)*
- 10: Security cover cap (Spare part-nr. 36209000)*
- 11: Flow restrictor (Spare part-nr. 36133000)*
- 12: Socket for spout elevation (Spare part-nr. 36210000)*
- 13: Mounting wrench (Spare part-nr. 19017000)*

* Optional accessories

36 207 001 EUROPLUS E INFRA-RED ELECTRONIC BASIN MIXER 1/2" WITH MIXING DEVICE AND ADJUSTABLE TEMPERATURE LIMITER

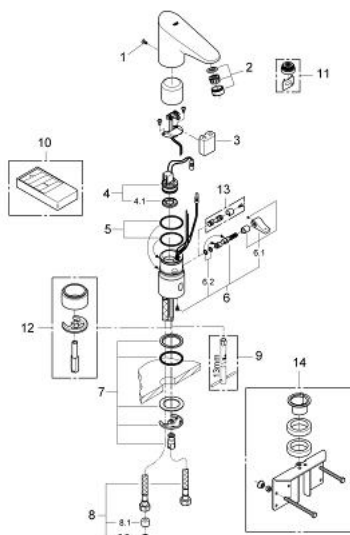


SPARE PARTS, September 2015 – June 2016

- 1: Screw (Spare part-nr. 4283100M)
- 2: Flow restrictor (Spare part-nr. 48159000)
- 3: Battery (Spare part-nr. 42886000)
- 4: Solenoid valve (Spare part-nr. 42229000)
- 4.1: Filter (Spare part-nr. 42798000)
- 5: O-Ring (Spare part-nr. 4283600M)
- 6: Lever (Spare part-nr. 42839000)
- 6.1: Mixing lever (Spare part-nr. 42838000)
- 6.2: O-Ring (Spare part-nr. 4284000M)
- 7: Fixing set (Spare part-nr. 42841000)
- 8: Connection hose (Spare part-nr. 42403000)
- 8.1: Non-return valve (Spare part-nr. 4240400M)
- 8.2: Filter (Spare part-nr. 4241300M)
- 9: Mounting wrench (Spare part-nr. 19017000)*
- 10: Remote control for all GROHE infra-red products (Spare part-nr. 36407000)*
- 11: Flow restrictor (Spare part-nr. 36133000)*
- 12: Socket for spout elevation (Spare part-nr. 36210000)*
- 13: Security cover cap (Spare part-nr. 36209000)*

* Optional accessories

36 207 001 EUROPLUS E INFRA-RED ELECTRONIC BASIN MIXER 1/2" WITH MIXING DEVICE AND ADJUSTABLE TEMPERATURE LIMITER



SPARE PARTS, May 2012 – September 2015

- 1: Screw (Spare part-nr. 4283100M)
- 2: Flow restrictor (Spare part-nr. 42832000)
- 3: Battery (Spare part-nr. 42886000)
- 4: Solenoid valve (Spare part-nr. 42229000)
- 4.1: Filter (Spare part-nr. 42798000)
- 5: O-Ring (Spare part-nr. 4283600M)
- 6: Lever (Spare part-nr. 42839000)
- 6.1: Mixing lever (Spare part-nr. 42838000)
- 6.2: O-Ring (Spare part-nr. 4284000M)
- 7: Fixing set (Spare part-nr. 42841000)
- 8: Connection hose (Spare part-nr. 42403000)
- 8.1: Non-return valve (Spare part-nr. 4240400M)
- 8.2: Filter (Spare part-nr. 4241300M)
- 9: Mounting wrench (Spare part-nr. 19017000)*
- 10: Infrared remote control (Spare part-nr. 36206000)*
- 11: Flow restrictor (Spare part-nr. 36133000)*
- 12: Socket for spout elevation (Spare part-nr. 36210000)*
- 13: Security cover cap (Spare part-nr. 36209000)*
- 14: Rotation lock (Spare part-nr. 42919000)*

* Optional accessories