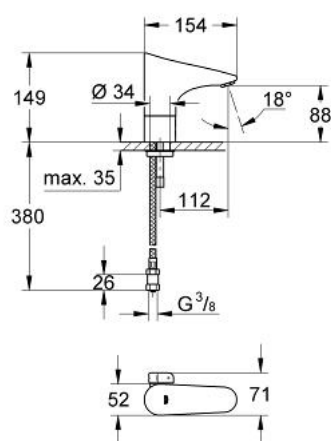


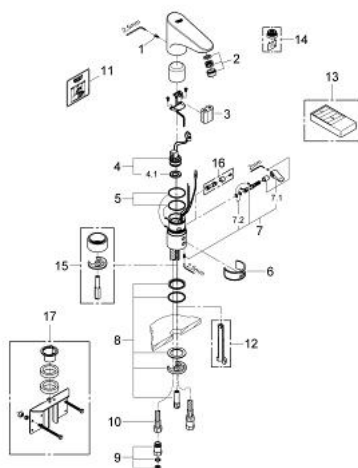
36 207 000 EUROPLUS E INFRA-RED ELECTRONIC BASIN MIXER 1/2"



PRODUCT DESCRIPTION

- Colour: Chrome
- battery supply
- 6V lithium battery, type CR-P2
- CE approved
- monobloc installation
- multistage battery status display
- safety shutdown circuit
- functions to activate with remote control 36 206 000:
- automatic flushing after 1 or 3 days without use
- thermal disinfection for 3,5 or 11 min
- 6.0 l/min flow rate
- mixing device with hot water stop-valve
- 2 flexible hoses
- dirt strainer
- non-return valve
- type of protection faucet IP 59K
- solenoid valve integrated in housing
- noise classification 1 in accordance with DIN4109
- GROHE Water Saving - Less water, perfect flow
- GROHE Long-Life finish

36 207 000 EUROPLUS E INFRA-RED ELECTRONIC BASIN MIXER 1/2"



SPARE PARTS, June 2008 – now

- 1: Screw (Spare part-nr. 4283100M)
- 2: Flow restrictor (Spare part-nr. 42832000)
- 3: Battery (Spare part-nr. 42886000)
- 4: Solenoid valve (Spare part-nr. 42229000)
- 4.1: Filter (Spare part-nr. 42798000)
- 5: O-Ring (Spare part-nr. 4283600M)
- 6: Cleaning clip (Spare part-nr. 42837000)
- 7: Lever (Spare part-nr. 42839000)
- 7.1: Mixing lever (Spare part-nr. 42838000)
- 7.2: O-Ring (Spare part-nr. 4284000M)
- 8: Fixing set (Spare part-nr. 42841000)
- 9: Non-return valve (Spare part-nr. 43431000)
- 10: Flexible connection hose, 470 (Spare part-nr. 45484000)
- 11: Sticker with pictograph (Spare part-nr. 4217700M)
- 12: Disassembling key (Spare part-nr. 19132000)*
- 13: Infrared remote control (Spare part-nr. 36206000)*
- 14: Flow restrictor (Spare part-nr. 36133000)*
- 15: Socket for spout elevation (Spare part-nr. 36210000)*
- 16: Security cover cap (Spare part-nr. 36209000)*
- 17: Rotation lock (Spare part-nr. 42919000)*

* Optional accessories