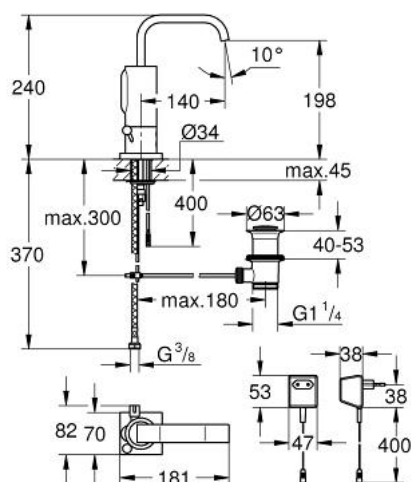


## 36 097 000 ALLURE E INFRA-RED ELECTRONIC BASIN MIXER 1/2" WITH MIXING DEVICE, ADJUSTABLE TEMPERATURE LIMITER AND WASTE SET

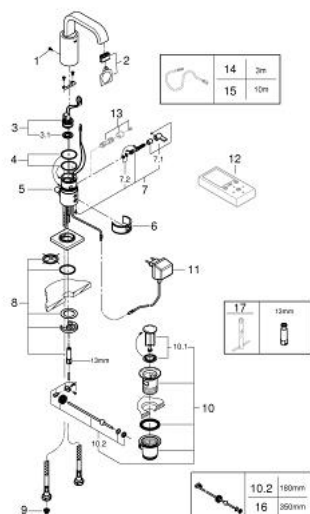


### PRODUCT DESCRIPTION

- Colour: Chrome
- monobloc installation
- without power supply 36 338 000 (required)
- GROHE Long-Life finish
- GROHE Water Saving 6.0 l/min. flow limiter
- integrated mousseur
- solenoid valve integrated in housing
- pop-up waste set 1 1/4"
- flexible connection hoses
- dirt strainers
- rapid installation system
- automatically stops after 60 sec. (factory set)
- additional functions and precise settings by remote control 36 407
- automatic flushing after 1 or 3 days without use
- thermal disinfection for 3,5 or 11 min
- CE approved
- type of protection faucet IP 59K



## 36 097 000 ALLURE E INFRA-RED ELECTRONIC BASIN MIXER 1/2" WITH MIXING DEVICE, ADJUSTABLE TEMPERATURE LIMITER AND WASTE SET



### SPARE PARTS, June 2016 – now

- 1: Screw (Spare part-nr. 4283100M)
- 2: Flow restrictor (Spare part-nr. 13220000)
- 3: Solenoid valve (Spare part-nr. 43066000)
- 3.1: Filter (Spare part-nr. 42798000)
- 4: O-Ring (Spare part-nr. 4283600M)
- 5: Pop-up rod (Spare part-nr. 42707000)
- 6: Cleaning clip (Spare part-nr. 42837000)
- 7: Lever (Spare part-nr. 42363000)
- 7.1: Mixing lever (Spare part-nr. 42364000)
- 7.2: O-Ring (Spare part-nr. 4284000M)
- 8: Fixing set (Spare part-nr. 42841000)
- 9: Filter (Spare part-nr. 4241300M)
- 10: Pop-up waste set 1 1/4" (Spare part-nr. 28910000)
- 10.1: Chrome bath plug (Spare part-nr. 07182000)
- 10.2: Eccentric rod (Spare part-nr. 07052000)
- 11: Plug transformer (Spare part-nr. 43016000)
- 12: Remote control for all GROHE infra-red products (Spare part-nr. 36407000)\*
- 13: Security cover cap (Spare part-nr. 36209000)\*
- 15: Extension cable (Spare part-nr. 36222000)\*
- 16: Eccentric rod (Spare part-nr. 07341000)\*
- 17: Mounting wrench (Spare part-nr. 19017000)\*

\* Optional accessories