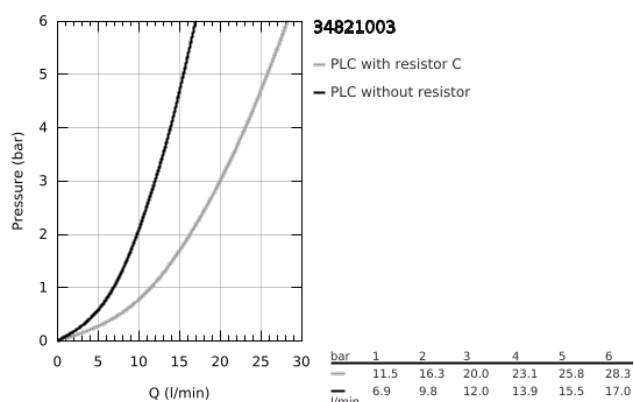
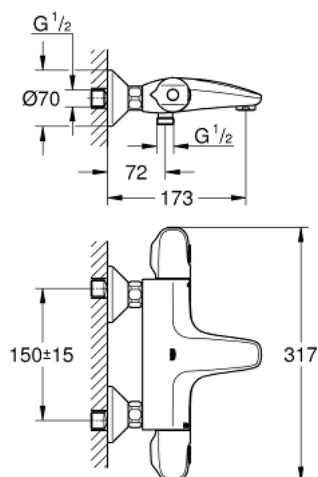


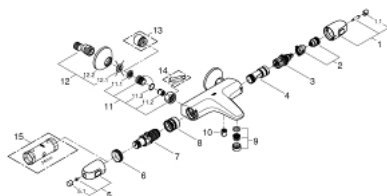
34 821 003 GROHTHERM 1000 THERMOSTATIC BATH/SHOWER MIXER 1/2"



PRODUCT DESCRIPTION

- Colour: Chrome
- wall mounted
- GROHE CoolTouch safety housing
- GROHE Long-Life finish
- GROHE MetalGrip ergonomically shaped metal handles
- GROHE SafeStop safety button at 38°C(calibration required)
- GROHE SafeStop Plus integrated temperature limiter at max 50°C
- GROHE Turbostat C3 compact cartridge with wax thermoelement
- integrated mixed water shut off
- GROHE AquaDimmer Eco with multiple function:
 - integrated GROHE EcoButton(economy button with economy stop for shower)
 - flow control
 - diverter: bath/shower
- shower bottom outlet 1/2"
- mousseur
- built-in non return valves
- dirt strainers
- protected against backflow
- S-unions
- metal escutcheon
- GROHE Water Saving - Less water, perfect flow
- professional edition

34 821 003 GROHTHERM 1000 THERMOSTATIC BATH/SHOWER MIXER 1/2"



SPARE PARTS, August 2020 – now

- 1: Shut-off handle (Spare part-nr. 47976000)
- 1.1: Cover Cap (Spare part-nr. 4797400M)
- 2: Temperature limiter (Spare part-nr. 47977000)
- 3: Aquadimmer (Spare part-nr. 12433000)
- 4: Water flow (Spare part-nr. 47751000)
- 5: Temperature control handle (Spare part-nr. 47978000)
- 5.1: Cover Cap (Spare part-nr. 4797400M)
- 6: retaining ring (Spare part-nr. 47743000)
- 7: Thermostatic compact cartridge 1/2" (Spare part-nr. 47885000)
- 8: Race (Spare part-nr. 47975000)
- 9: Flow restrictor (Spare part-nr. 13952000)
- 10: Non-return valve (Spare part-nr. 08565000)
- 11: Non-return valve (Spare part-nr. 47189000)
- 11.1: Filter (Spare part-nr. 0726400M)
- 11.2: Non-return valve (Spare part-nr. 08565000)
- 11.3: O-Ring Ø17 x Ø2 (Spare part-nr. 0305500M)
- 12: S-union (Spare part-nr. 12075000)
- 12.1: Sealing washer (Spare part-nr. 0138600M)
- 12.2: Escutcheon (Spare part-nr. 0221000M)
- 13: Extension 3/4", 20 mm (Spare part-nr. 0713000M)*
- 14: Special Spanner (Spare part-nr. 19377000)*
- 15: Socket Spanner (Spare part-nr. 19332000)*
- * Optional accessories