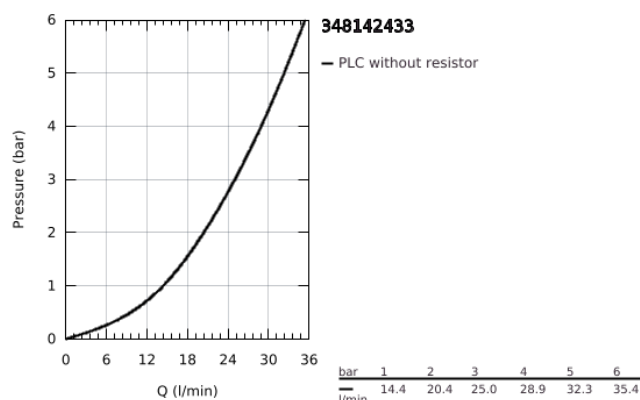
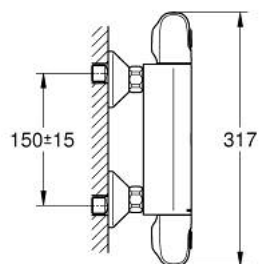
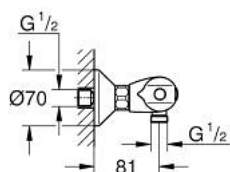


## 34 814 243 3 GROHTHERM 1000 THERMOSTATIC SHOWER MIXER 1/2"



### PRODUCT DESCRIPTION

- Colour: matte black
- wall mounted
- GROHE CoolTouch safety housing
- GROHE MetalGrip ergonomically shaped metal handles
- GROHE SafeStop safety button at 38°C(calibration required)
- GROHE SafeStop Plus optional temperature limiter at 43°C included
- GROHE TurboStat compact cartridge with wax thermoelement
- integrated mixed water shut off
- volume handle with GROHE EcoButton(economy button with individually adjustable economy stop)
- ceramic headpart 1/2", 180°
- shower bottom outlet 1/2"
- built-in non return valves
- dirt strainers
- protected against backflow
- S-unions
- metal escutcheon
- GROHE Water Saving - Less water, perfect flow
- professional edition

## 34 814 243 3 GROHTHERM 1000 THERMOSTATIC SHOWER MIXER 1/2"



### SPARE PARTS, June 2023 – now

- 1: GRT 1000 New shut-off handle (Spare part-nr. 479722430)
  - 1.1: cap (Spare part-nr. 47974243M)
  - 2: Ceramic headpart, 1/2" (Spare part-nr. 45346000)
  - 2.1: O-Ring Ø18,2 x Ø1,7 (Spare part-nr. 0392400M)
  - 3: GRT 1000 New temperature control handle (Spare part-nr. 479732430)
  - 3.1: cap (Spare part-nr. 47974243M)
  - 4: retaining ring (Spare part-nr. 47743000)
  - 5: Thermostatic compact cartridge 1/2" (Spare part-nr. 47439000)
  - 6: Race (Spare part-nr. 47975000)
  - 7: Non-return valve (Spare part-nr. 08565000)
  - 8: Non-return valve (Spare part-nr. 471892430)
  - 8.1: Filter (Spare part-nr. 0726400M)
  - 8.2: Non-return valve (Spare part-nr. 08565000)
  - 8.3: O-Ring Ø17 x Ø2 (Spare part-nr. 0305500M)
  - 9: S-union (Spare part-nr. 120752430)
  - 9.1: Sealing washer (Spare part-nr. 0138600M)
  - 9.2: Escutcheon (Spare part-nr. 02210243M)
  - 10: Extension 3/4", 20 mm (Spare part-nr. 0713000M)\*
  - 11: Special Spanner (Spare part-nr. 19377000)\*
  - 12: Socket Spanner (Spare part-nr. 19332000)\*
  - 13: GROHE TurboStat cartridge 1/2" (Spare part-nr. 47175000)\*
- \* Optional accessories