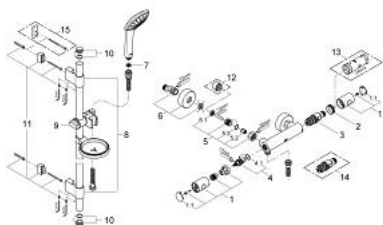


34 286 000 GROHTHERM 1000 COSMOPOLITAN THERMOSTATIC SHOWER MIXER 1/2"

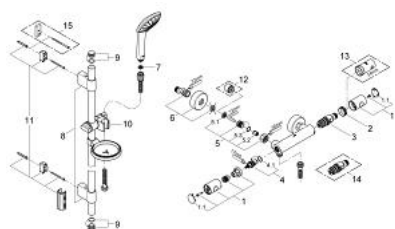


SPARE PARTS, July 2010 – now

- 1: Handle (Spare part-nr. 47718000)
- 1.1: Cover Cap (Spare part-nr. 6458500M)
- 2: retaining ring (Spare part-nr. 47743000)
- 3: Thermostatic compact cartridge 1/2" (Spare part-nr. 47439000)
- 4: Ceramic headpart, 1/2" (Spare part-nr. 45346000)
- 4.1: O-Ring Ø18,2 x Ø1,7 (Spare part-nr. 0392400M)
- 5: Non-return valve (Spare part-nr. 47189000)
- 5.1: Filter (Spare part-nr. 0726400M)
- 5.2: Non-return valve (Spare part-nr. 08565000)
- 5.3: O-Ring Ø17 x Ø2 (Spare part-nr. 0305500M)
- 6: S-union (Spare part-nr. 12662000)
- 7: Strainer (Spare part-nr. 0700200M)
- 8: Outlet shower holder (Spare part-nr. 0666700M)
- 9: Sliding piece (Spare part-nr. 65380000)
- 10: Cover Cap (Spare part-nr. 45922000)
- 11: Fixing set (Spare part-nr. 45403000)
- 12: Extension 3/4", 20 mm (Spare part-nr. 0713000M)*
- 13: Socket Spanner (Spare part-nr. 19332000)*
- 14: GROHE TurboStat cartridge 1/2" (Spare part-nr. 47175000)*
- 15: Spacer (Spare part-nr. 45914XE0)*

* Optional accessories

34 286 000 GROHTHERM 1000 COSMOPOLITAN THERMOSTATIC SHOWER MIXER 1/2"

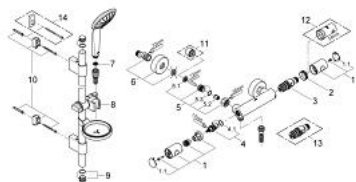


SPARE PARTS, October 2009 – July 2010

- 1: Handle (Spare part-nr. 47718000)
- 1.1: Cover Cap (Spare part-nr. 6458500M)
- 2: retaining ring (Spare part-nr. 47743000)
- 3: Thermostatic compact cartridge 1/2" (Spare part-nr. 47439000)
- 4: Ceramic headpart, 1/2" (Spare part-nr. 45346000)
- 4.1: O-Ring Ø18,2 x Ø1,7 (Spare part-nr. 0392400M)
- 5: Non-return valve (Spare part-nr. 47189000)
- 5.1: Filter (Spare part-nr. 0726400M)
- 5.2: Non-return valve (Spare part-nr. 08565000)
- 5.3: O-Ring Ø17 x Ø2 (Spare part-nr. 0305500M)
- 6: S-union (Spare part-nr. 12662000)
- 7: Strainer (Spare part-nr. 0700200M)
- 8: Outlet shower holder (Spare part-nr. 6424500M)
- 9: Sliding piece (Spare part-nr. 65380000)
- 10: Cover Cap (Spare part-nr. 45922000)
- 11: Fixing set (Spare part-nr. 48010000)
- 12: Extension 3/4", 20 mm (Spare part-nr. 0713000M)*
- 13: Socket Spanner (Spare part-nr. 19332000)*
- 14: GROHE TurboStat cartridge 1/2" (Spare part-nr. 47175000)*
- 15: Spacer (Spare part-nr. 45914XE0)*

* Optional accessories

34 286 000 GROHTHERM 1000 COSMOPOLITAN THERMOSTATIC SHOWER MIXER 1/2"



SPARE PARTS, July 2008 – October 2009

- 1: Handle (Spare part-nr. 47718000)
- 1.1: Cover Cap (Spare part-nr. 6458500M)
- 2: retaining ring (Spare part-nr. 47743000)
- 3: Thermostatic compact cartridge 1/2" (Spare part-nr. 47439000)
- 4: Ceramic headpart, 1/2" (Spare part-nr. 45346000)
- 4.1: O-Ring Ø18,2 x Ø1,7 (Spare part-nr. 0392400M)
- 5: Non-return valve (Spare part-nr. 47189000)
- 5.1: Filter (Spare part-nr. 0726400M)
- 5.2: Non-return valve (Spare part-nr. 08565000)
- 5.3: O-Ring Ø17 x Ø2 (Spare part-nr. 0305500M)
- 6: S-union (Spare part-nr. 12662000)
- 7: Strainer (Spare part-nr. 0700200M)
- 8: Sliding piece (Spare part-nr. 65380000)
- 9: Cover Cap (Spare part-nr. 45922000)
- 10: Fixing set (Spare part-nr. 48010000)
- 11: Extension 3/4", 20 mm (Spare part-nr. 0713000M)*
- 12: Socket Spanner (Spare part-nr. 19332000)*
- 13: GROHE TurboStat cartridge 1/2" (Spare part-nr. 47175000)*
- 14: Spacer (Spare part-nr. 45914XE0)*

* Optional accessories