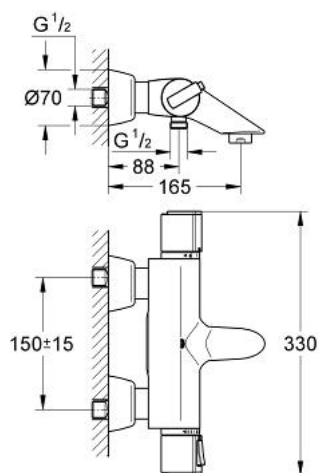


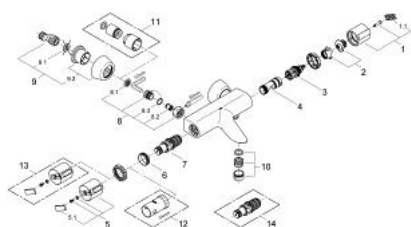
34 174 000 GROHTHERM 2000 THERMOSTATIC BATH/SHOWER MIXER 1/2"



PRODUCT DESCRIPTION

- Colour: Chrome
- wall mounted
- GROHE CoolTouch safety housing
- GROHE TurboStat compact cartridge with wax thermoelement
- integrated mixed water shut off
- ceramic headpart 1/2", 180°
- Aquadimmer with multiple function
- - flow control
- - diverter: bath/shower
- GROHE SafeStop safety button at 38°C(calibration required)
- shower bottom outlet 1/2"
- mousseur
- built-in non return valves
- dirt strainers
- covered S-unions
- protected against backflow
- GROHE Water Saving - Less water, perfect flow
- GROHE Long-Life finish

34 174 000 GROHTHERM 2000 THERMOSTATIC BATH/SHOWER MIXER 1/2"



SPARE PARTS, February 2004 – now

- 1: Handle for shut-off valve (Spare part-nr. 47744000)
- 1.1: Cover Cap (Spare part-nr. 1007500M)
- 2: Temperature limiter (Spare part-nr. 47750000)
- 3: Aquadimmer (Spare part-nr. 12433000)
- 4: Water flow (Spare part-nr. 47751000)
- 5: Temperature scale handle (Spare part-nr. 47742000)
- 5.1: Cover Cap (Spare part-nr. 1007500M)
- 6: retaining ring (Spare part-nr. 47743000)
- 7: Thermostatic compact cartridge 1/2" (Spare part-nr. 47439000)
- 8: Non-return valve (Spare part-nr. 47189000)
- 8.1: Filter (Spare part-nr. 0726400M)
- 8.2: Non-return valve (Spare part-nr. 08565000)
- 8.3: O-Ring Ø17 x Ø2 (Spare part-nr. 0305500M)
- 9: S-union (Spare part-nr. 12058000)
- 9.1: Sealing washer (Spare part-nr. 0138600M)
- 9.2: Covering escutcheon (Spare part-nr. 45545000)
- 10: Flow restrictor (Spare part-nr. 13927000)
- 11: Extension 30 (Spare part-nr. 46238000)*
- 12: Socket Spanner (Spare part-nr. 19332000)*
- 13: Temperature scale handle (Spare part-nr. 47286000)*
- 14: GROHE TurboStat cartridge 1/2" (Spare part-nr. 47175000)*

* Optional accessories