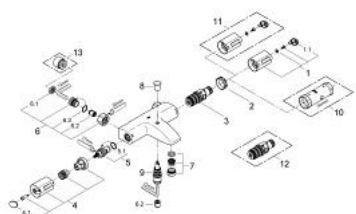


34 156 000 GROHTHERM 1000 THERMOSTATIC BATH/SHOWER MIXER 1/2"



SPARE PARTS, November 2009 – now

- 1: Temperature scale handle (Spare part-nr. 47737000)
- 1.1: Cover Cap (Spare part-nr. 1009900M)
- 2: retaining ring (Spare part-nr. 47743000)
- 3: Thermostatic compact cartridge 1/2" (Spare part-nr. 47439000)
- 4: Handle for shut-off valve with economy device (Spare part-nr. 47736000)
- 4.1: Cover Cap (Spare part-nr. 1009900M)
- 5: Ceramic headpart, 1/2" (Spare part-nr. 45346000)
- 5.1: O-Ring Ø18,2 x Ø1,7 (Spare part-nr. 0392400M)
- 6: Non-return valve (Spare part-nr. 47189000)
- 6.1: Filter (Spare part-nr. 0726400M)
- 6.2: Non-return valve (Spare part-nr. 08565000)
- 6.3: O-Ring Ø17 x Ø2 (Spare part-nr. 0305500M)
- 7: Flow restrictor (Spare part-nr. 13941000)
- 8: Diverter knob (Spare part-nr. 65648000)
- 9: Diverter (Spare part-nr. 65655000)
- 10: Socket Spanner (Spare part-nr. 19332000)*
- 11: Temperature scale handle (Spare part-nr. 47739000)*
- 12: GROHE TurboStat cartridge 1/2" (Spare part-nr. 47175000)*
- 13: Extension 3/4", 20 mm (Spare part-nr. 0713000M)*

* Optional accessories

34 156 000 GROHTHERM 1000 THERMOSTATIC BATH/SHOWER MIXER 1/2"

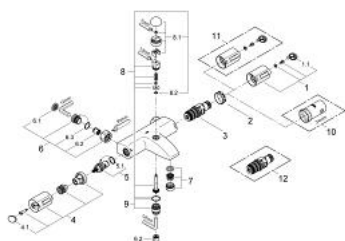
SPARE PARTS, June 2009 – November 2009

- 1: Temperature scale handle (Spare part-nr. 47737000)
- 1.1: Cover Cap (Spare part-nr. 1009900M)
- 2: retaining ring (Spare part-nr. 47743000)
- 3: Thermostatic compact cartridge 1/2" (Spare part-nr. 47439000)
- 4: Handle for shut-off valve with economy device (Spare part-nr. 47736000)
- 4.1: Cover Cap (Spare part-nr. 1009900M)
- 5: Ceramic headpart, 1/2" (Spare part-nr. 45346000)
- 5.1: O-Ring Ø18,2 x Ø1,7 (Spare part-nr. 0392400M)
- 6: Non-return valve (Spare part-nr. 47189000)
- 6.1: Filter (Spare part-nr. 0726400M)
- 6.2: Non-return valve (Spare part-nr. 08565000)
- 6.3: O-Ring Ø17 x Ø2 (Spare part-nr. 0305500M)
- 7: Flow restrictor (Spare part-nr. 13952000)
- 8: Diverter knob (Spare part-nr. 65648000)
- 9: Diverter (Spare part-nr. 65655000)
- 10: Socket Spanner (Spare part-nr. 19332000)*
- 11: Temperature scale handle (Spare part-nr. 47739000)*
- 12: GROHE TurboStat cartridge 1/2" (Spare part-nr. 47175000)*
- 13: Extension 3/4", 20 mm (Spare part-nr. 0713000M)*

* Optional accessories

No exploded view is available for this spare part list.

34 156 000 GROHTHERM 1000 THERMOSTATIC BATH/SHOWER MIXER 1/2"



SPARE PARTS, February 2004 – June 2009

- 1: Temperature scale handle (Spare part-nr. 47737000)
 - 1.1: Cover Cap (Spare part-nr. 1009900M)
 - 2: retaining ring (Spare part-nr. 47743000)
 - 3: Thermostatic compact cartridge 1/2" (Spare part-nr. 47439000)
 - 4: Handle for shut-off valve with economy device (Spare part-nr. 47736000)
 - 4.1: Cover Cap (Spare part-nr. 1009900M)
 - 5: Ceramic headpart, 1/2" (Spare part-nr. 45346000)
 - 5.1: O-Ring Ø18,2 x Ø1,7 (Spare part-nr. 0392400M)
 - 6: Non-return valve (Spare part-nr. 47189000)
 - 6.1: Filter (Spare part-nr. 0726400M)
 - 6.2: Non-return valve (Spare part-nr. 08565000)
 - 6.3: O-Ring Ø17 x Ø2 (Spare part-nr. 0305500M)
 - 7: Flow restrictor (Spare part-nr. 13952000)
 - 8: Diverter (Spare part-nr. 47238000)
 - 8.1: Diverter knob (Spare part-nr. 47354000)
 - 8.2: O-Ring Ø6 x Ø2 (Spare part-nr. 0128300M)
 - 8.2: O-ring Ø 6 x Ø 2 (Spare part-nr. 0881100M)
 - 9: Nipple (Spare part-nr. 47355000)
 - 10: Socket Spanner (Spare part-nr. 19332000)*
 - 11: Temperature scale handle (Spare part-nr. 47739000)*
 - 12: GROHE TurboStat cartridge 1/2" (Spare part-nr. 47175000)*
- * Optional accessories