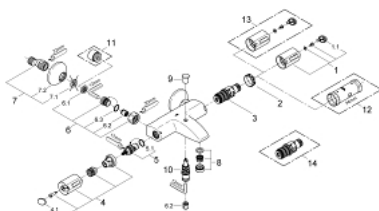


34 155 000 GROHTHERM 1000 THERMOSTATIC BATH/SHOWER MIXER 1/2"



SPARE PARTS, April 2010 – now

- 1: Temperature scale handle (Spare part-nr. 47737000)
- 1.1: Cover Cap (Spare part-nr. 1009900M)
- 2: retaining ring (Spare part-nr. 47743000)
- 3: Thermostatic compact cartridge 1/2" (Spare part-nr. 47439000)
- 4: Handle for shut-off valve with economy device (Spare part-nr. 47736000)
- 4.1: Cover Cap (Spare part-nr. 1009900M)
- 5: Ceramic headpart, 1/2" (Spare part-nr. 45346000)
- 5.1: O-Ring Ø18,2 x Ø1,7 (Spare part-nr. 0392400M)
- 6: Non-return valve (Spare part-nr. 47189000)
- 6.1: Filter (Spare part-nr. 0726400M)
- 6.2: Non-return valve (Spare part-nr. 08565000)
- 6.3: O-Ring Ø17 x Ø2 (Spare part-nr. 0305500M)
- 7: S-union (Spare part-nr. 12075000)
- 7.1: Sealing washer (Spare part-nr. 0138600M)
- 7.2: Escutcheon (Spare part-nr. 0221000M)
- 8: Flow restrictor (Spare part-nr. 13941000)
- 9: Diverter knob (Spare part-nr. 65648000)
- 10: Diverter (Spare part-nr. 65655000)
- 11: Extension 3/4", 20 mm (Spare part-nr. 0713000M)*
- 12: Socket Spanner (Spare part-nr. 19332000)*
- 13: Temperature scale handle (Spare part-nr. 47739000)*
- 14: GROHE TurboStat cartridge 1/2" (Spare part-nr. 47175000)*

* Optional accessories

34 155 000 GROHTHERM 1000 THERMOSTATIC BATH/SHOWER MIXER 1/2"

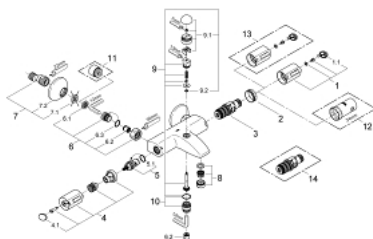
SPARE PARTS, June 2009 – April 2010

- 1: Temperature scale handle (Spare part-nr. 47737000)
- 1.1: Cover Cap (Spare part-nr. 1009900M)
- 2: retaining ring (Spare part-nr. 47743000)
- 3: Thermostatic compact cartridge 1/2" (Spare part-nr. 47439000)
- 4: Handle for shut-off valve with economy device (Spare part-nr. 47736000)
- 4.1: Cover Cap (Spare part-nr. 1009900M)
- 5: Ceramic headpart, 1/2" (Spare part-nr. 45346000)
- 5.1: O-Ring Ø18,2 x Ø1,7 (Spare part-nr. 0392400M)
- 6: Non-return valve (Spare part-nr. 47189000)
- 6.1: Filter (Spare part-nr. 0726400M)
- 6.2: Non-return valve (Spare part-nr. 08565000)
- 6.3: O-Ring Ø17 x Ø2 (Spare part-nr. 0305500M)
- 7: S-union (Spare part-nr. 12075000)
- 7.1: Sealing washer (Spare part-nr. 0138600M)
- 7.2: Escutcheon (Spare part-nr. 0221000M)
- 8: Flow restrictor (Spare part-nr. 13952000)
- 9: Diverter knob (Spare part-nr. 65648000)
- 10: Diverter (Spare part-nr. 65655000)
- 11: Extension 3/4", 20 mm (Spare part-nr. 0713000M)*
- 12: Socket Spanner (Spare part-nr. 19332000)*
- 13: Temperature scale handle (Spare part-nr. 47739000)*
- 14: GROHE TurboStat cartridge 1/2" (Spare part-nr. 47175000)*

* Optional accessories

No exploded view is available for this spare part list.

34 155 000 GROHTHERM 1000 THERMOSTATIC BATH/SHOWER MIXER 1/2"



SPARE PARTS, February 2004 – June 2009

- 1: Temperature scale handle (Spare part-nr. 47737000)
- 1.1: Cover Cap (Spare part-nr. 1009900M)
- 2: retaining ring (Spare part-nr. 47743000)
- 3: Thermostatic compact cartridge 1/2" (Spare part-nr. 47439000)
- 4: Handle for shut-off valve with economy device (Spare part-nr. 47736000)
- 4.1: Cover Cap (Spare part-nr. 1009900M)
- 5: Ceramic headpart, 1/2" (Spare part-nr. 45346000)
- 6: Non-return valve (Spare part-nr. 47189000)
- 6.1: Filter (Spare part-nr. 0726400M)
- 6.2: Non-return valve (Spare part-nr. 08565000)
- 6.3: O-Ring Ø17 x Ø2 (Spare part-nr. 0305500M)
- 7: S-union (Spare part-nr. 12075000)
- 7.1: Sealing washer (Spare part-nr. 0138600M)
- 7.2: Escutcheon (Spare part-nr. 0221000M)
- 8: Flow restrictor (Spare part-nr. 13952000)
- 9: Diverter (Spare part-nr. 47238000)
- 9.1: Diverter knob (Spare part-nr. 47354000)
- 9.2: O-Ring Ø6 x Ø2 (Spare part-nr. 0128300M)
- 9.2: O-ring Ø 6 x Ø 2 (Spare part-nr. 0881100M)
- 10: Nipple (Spare part-nr. 47355000)
- 11: Extension 3/4", 20 mm (Spare part-nr. 0713000M)*
- 12: Socket Spanner (Spare part-nr. 19332000)*
- 13: Temperature scale handle (Spare part-nr. 47739000)*
- 14: GROHE TurboStat cartridge 1/2" (Spare part-nr. 47175000)*

* Optional accessories