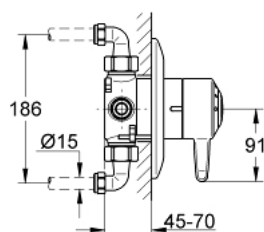
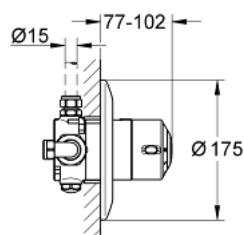


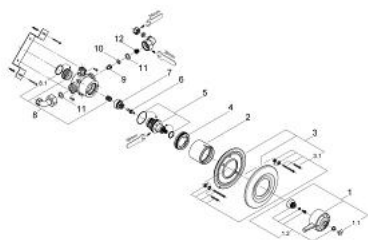
34 041 IL0 AVENSYS SINGLE CONTROL D08 SHOWER MIXER 1/2"



PRODUCT DESCRIPTION

- Colour: chrome/white
- Thermostatic
- suitable for high / low pressure
- concealed brass body & trim set
- factory set max. temperature 41°C
- installation bracket for body
- in masonry / stud walls
- combined flow & temperature control handle
- metal lever
- built-in non return valves
- dirt strainers
- shower outlet 1/2" top or bottom
- reversible body for crossed supplies
- flow limiters for high (>1.0 bar) or unequal pressures
- GROHE Long-Life finish
- recommended pressure 0.1 - 5.0 bar

34 041 IL0 AVENSYS SINGLE CONTROL D08 SHOWER MIXER 1/2"



SPARE PARTS, January 1999 – now

- 1: lever (Spare part-nr. 47595IL0)
- 1.1: Cover Cap (Spare part-nr. 00090IL0)
- 1.2: Fixing set (Spare part-nr. 47592000)
- 2: Sealing washer (Spare part-nr. 01239000)
- 3: Escutcheon (Spare part-nr. 46455000)
- 3.1: Screw (Spare part-nr. 0936100M)
- 4: Stop ring (Spare part-nr. 47593000)
- 5: Control unit (Spare part-nr. 47600000)
- 6: Wax thermo-element (Spare part-nr. 00798000)
- 7: Slider (Spare part-nr. 07587000)
- 8: Thermostat seat (Spare part-nr. 47594000)
- 8.1: O-Ring (Spare part-nr. 0316900M)
- 9: Non-return valve (Spare part-nr. 0654400M)
- 10: Flow limiter set (Spare part-nr. 46428000)
- 11: Sealing washer (Spare part-nr. 0138600M)
- 12: Strainer (Spare part-nr. 0699500M)