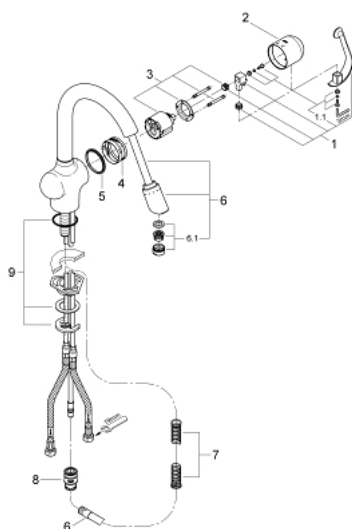


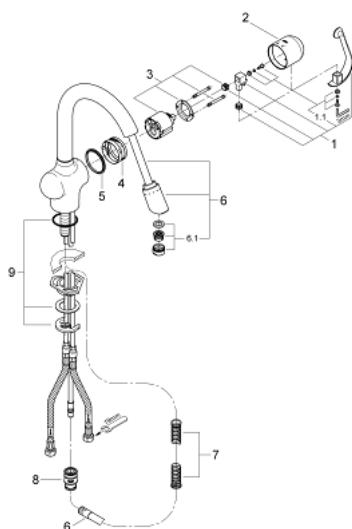
33 708 000 ZEDRA SINGLE-LEVER SINK MIXER 1/2"



SPARE PARTS, June 2010 – now

- 1: Lever (Spare part-nr. 46309000)
- 1.1: Fixing set (Spare part-nr. 46310000)
- 2: Cover Cap (Spare part-nr. 46311000)
- 3: Cartridge (Spare part-nr. 46048000)
- 4: Guide ring (Spare part-nr. 0538000M)
- 5: Sliding ring (Spare part-nr. 04954V0M)
- 6: Extractable outlet (Spare part-nr. 46246000)
- 6.1: Flow restrictor (Spare part-nr. 13952000)
- 7: Compression spring (Spare part-nr. 07240000)
- 8: Quick coupling (Spare part-nr. 46315000)
- 9: Shank mounting kit (Spare part-nr. 46345000)

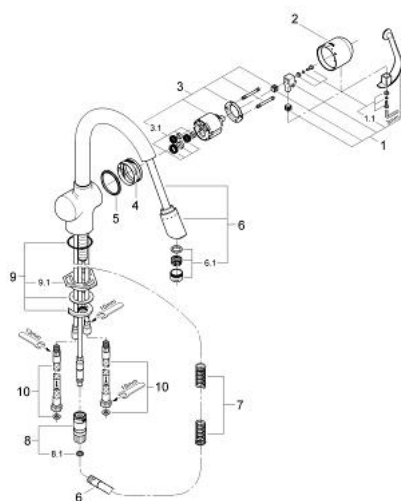
33 708 000 ZEDRA SINGLE-LEVER SINK MIXER 1/2"



SPARE PARTS, January 2002 – June 2010

- 1: Lever (Spare part-nr. 46309000)
- 1.1: Fixing set (Spare part-nr. 46310000)
- 2: Cover Cap (Spare part-nr. 46311000)
- 3: Cartridge (Spare part-nr. 46048000)
- 4: Guide ring (Spare part-nr. 0538000M)
- 5: Sliding ring (Spare part-nr. 04954V0M)
- 6: Extractable outlet (Spare part-nr. 46199000)
- 6.1: Flow restrictor (Spare part-nr. 13961000)
- 7: Compression spring (Spare part-nr. 07240000)
- 8: Quick coupling (Spare part-nr. 46338000)
- 9: Shank mounting kit (Spare part-nr. 46345000)

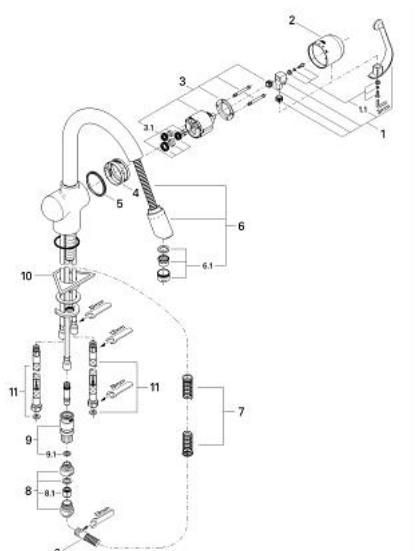
33 708 000 ZEDRA SINGLE-LEVER SINK MIXER 1/2"



SPARE PARTS, January 1999 – January 2002

- 1: Lever (Spare part-nr. 46309000)
- 1.1: Fixing set (Spare part-nr. 46310000)
- 2: Cover Cap (Spare part-nr. 46311000)
- 3: Cartridge (Spare part-nr. 46048000)
- 3.1: Replacement kit for seal (Spare part-nr. 46209000)
- 4: Guide ring (Spare part-nr. 0538000M)
- 5: Sliding ring (Spare part-nr. 04954V0M)
- 6: Extractable outlet (Spare part-nr. 46246000)
- 6.1: Flow restrictor (Spare part-nr. 13952000)
- 7: Compression spring (Spare part-nr. 07240000)
- 8: Quick coupling (Spare part-nr. 46315000)
- 8.1: O-ring $\varnothing 10 \times \varnothing 2,2$ (Spare part-nr. 0057500M)
- 9: Shank mounting kit (Spare part-nr. 46345000)
- 9.1: Support plate (Spare part-nr. 05334000)

33 708 000 ZEDRA SINGLE-LEVER SINK MIXER 1/2"



SPARE PARTS, January 1995 – January 1999

- 1: Lever (Spare part-nr. 46309000)
- 1.1: Fixing set (Spare part-nr. 46310000)
- 2: Cover Cap (Spare part-nr. 46311000)
- 3: Cartridge (Spare part-nr. 46048000)
- 3.1: Replacement kit for seal (Spare part-nr. 46209000)
- 4: Guide ring (Spare part-nr. 0538000M)
- 5: Sliding ring (Spare part-nr. 04954V0M)
- 6: Extractable outlet (Spare part-nr. 46246000)
- 6.1: Flow restrictor (Spare part-nr. 13952000)
- 7: Compression spring (Spare part-nr. 07240000)
- 8: Non-return valve (Spare part-nr. 08675000)
- 8.1: Non-return valve (Spare part-nr. 08565000)
- 9: Quick coupling (Spare part-nr. 46315000)
- 9.1: O-ring $\varnothing 10 \times \varnothing 2,2$ (Spare part-nr. 0057500M)
- 10: Support plate (Spare part-nr. 05334000)