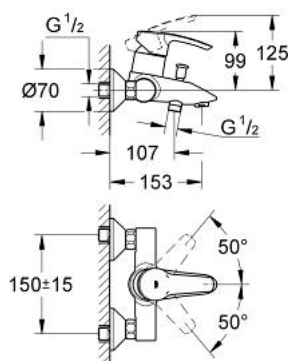


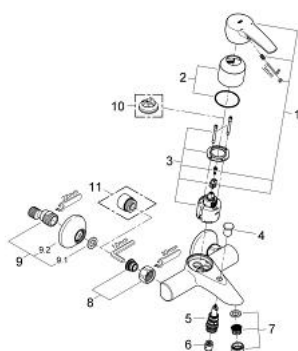
33 591 001 EUROSTYLE SINGLE-LEVER BATH/SHOWER MIXER 1/2"



PRODUCT DESCRIPTION

- Colour: Chrome
- wall mounted
- metal lever
- GROHE SilkMove 46 mm ceramic cartridge
- GROHE Long-Life finish
- adjustable flow rate limiter
- adjustable minimum flow rate 2.5 l/min
- automatic diverter: bath/shower
- mousseur
- integrated non-return valve in the shower outlet 1/2"
- S-unions
- metal wall escutcheons
- protected against backflow
- optional temperature limiter (46 375 000)
- noise classification 1 in accordance with DIN4109

33 591 001 EUROSTYLE SINGLE-LEVER BATH/SHOWER MIXER 1/2"



SPARE PARTS, July 2009 – now

- 1: Lever (Spare part-nr. 46577000)
- 2: Shield for cross handle (Spare part-nr. 46578000)
- 3: Cartridge (Spare part-nr. 46048000)
- 4: Diverter knob (Spare part-nr. 65648000)
- 5: Diverter (Spare part-nr. 65655000)
- 6: Non-return valve (Spare part-nr. 08565000)
- 7: Flow restrictor (Spare part-nr. 13952000)
- 8: Screw joint (Spare part-nr. 45044000)
- 9: S-union (Spare part-nr. 12075000)
- 9.1: Sealing washer (Spare part-nr. 0138600M)
- 9.2: Escutcheon (Spare part-nr. 0221000M)
- 10: Temperature limiter (Spare part-nr. 46375000)*
- 11: Extension 3/4", 20 mm (Spare part-nr. 0713000M)*

* Optional accessories