

33 300 001 EUROSMART SINGLE-LEVER BATH/SHOWER MIXER 1/2"

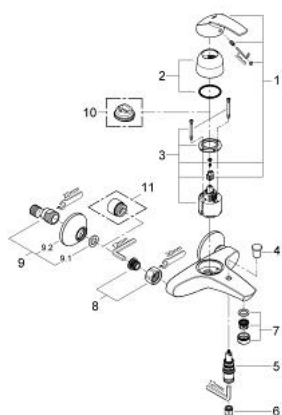
SPARE PARTS, May 2009 – now

- 1: Lever (Spare part-nr. 46561000)
- 2: Shield for cross handle (Spare part-nr. 46427000)
- 3: Cartridge (Spare part-nr. 46048000)
- 4: Diverter knob (Spare part-nr. 65648000)
- 5: Diverter (Spare part-nr. 65655000)
- 6: Non-return valve (Spare part-nr. 08565000)
- 7: Flow restrictor (Spare part-nr. 13952000)
- 8: Screw joint (Spare part-nr. 45044000)
- 9: S-union (Spare part-nr. 12075000)
- 9.1: Sealing washer (Spare part-nr. 0138600M)
- 9.2: Escutcheon (Spare part-nr. 0221000M)
- 10: Temperature limiter (Spare part-nr. 46308000)*
- 11: Extension 3/4", 20 mm (Spare part-nr. 0713000M)*

* Optional accessories

No exploded view is available for this spare part list.

33 300 001 EUROSMART SINGLE-LEVER BATH/SHOWER MIXER 1/2"



SPARE PARTS, March 2008 – May 2009

- 1: Lever (Spare part-nr. 46561000)
- 2: Shield for cross handle (Spare part-nr. 46427000)
- 3: Cartridge (Spare part-nr. 46048000)
- 4: Diverter knob (Spare part-nr. 65648000)
- 5: Diverter (Spare part-nr. 65655000)
- 6: Non-return valve (Spare part-nr. 08565000)
- 7: Flow restrictor (Spare part-nr. 13952000)
- 8: Screw joint (Spare part-nr. 45044000)
- 9: S-union (Spare part-nr. 12075000)
- 9.1: Sealing washer (Spare part-nr. 0138600M)
- 9.2: Escutcheon (Spare part-nr. 0221000M)
- 10: Temperature limiter (Spare part-nr. 46308000)*
- 11: Extension 3/4", 20 mm (Spare part-nr. 0713000M)*

* Optional accessories

33 300 001 EUROSMART SINGLE-LEVER BATH/SHOWER MIXER 1/2"

SPARE PARTS, August 2007 – March 2008

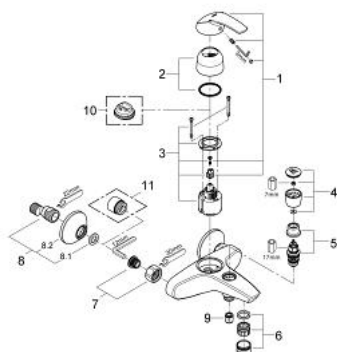
- 1: Lever (Spare part-nr. 46561000)
- 2: Shield for cross handle (Spare part-nr. 46427000)
- 3: Cartridge (Spare part-nr. 46048000)
- 3.1: Replacement kit for seal (Spare part-nr. 46209000)
- 4: Diverter knob (Spare part-nr. 65648000)
- 5: Diverter (Spare part-nr. 65655000)
- 6: Non-return valve (Spare part-nr. 08565000)
- 7: Flow restrictor (Spare part-nr. 13927000)
- 8: Screw joint (Spare part-nr. 45044000)
- 9: S-union (Spare part-nr. 12075000)
- 9.1: Sealing washer (Spare part-nr. 0138600M)
- 9.2: Escutcheon (Spare part-nr. 0221000M)
- 10: Temperature limiter (Spare part-nr. 46308000)*
- 11: Extension 3/4", 20 mm (Spare part-nr. 0713000M)*

* Optional accessories

No exploded view is available for this spare part list.

33 300 001 EUROSMART SINGLE-LEVER BATH/SHOWER MIXER 1/2"

SPARE PARTS, August 2005 – August 2007



- 1: Lever (Spare part-nr. 46561000)
- 2: Shield for cross handle (Spare part-nr. 46427000)
- 3: Cartridge (Spare part-nr. 46048000)
- 4: Diverter knob (Spare part-nr. 46007000)
- 5: Diverter (Spare part-nr. 08915000)
- 6: Flow restrictor (Spare part-nr. 13927000)
- 7: Screw joint (Spare part-nr. 45044000)
- 8: S-union (Spare part-nr. 12075000)
- 8.1: Sealing washer (Spare part-nr. 0138600M)
- 8.2: Escutcheon (Spare part-nr. 0221000M)
- 9: Non-return valve (Spare part-nr. 08565000)
- 10: Temperature limiter (Spare part-nr. 46308000)*
- 11: Extension 3/4", 20 mm (Spare part-nr. 0713000M)*
- * Optional accessories