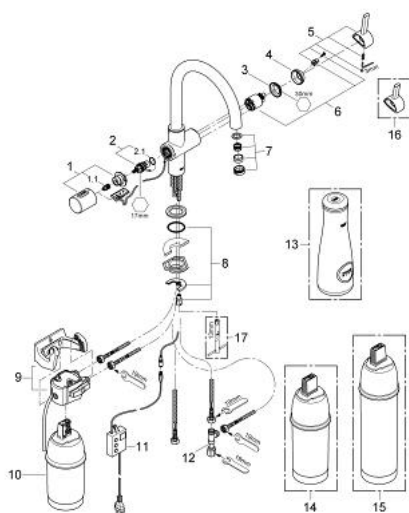


33 249 000 GROHE BLUE PURE STARTER KIT

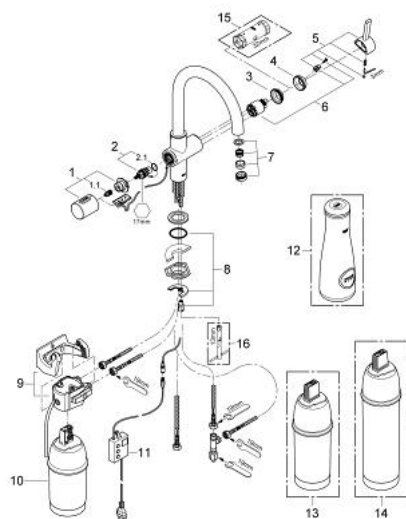


SPARE PARTS, August 2012 – now

- 1: Handle (Spare part-nr. 46652000)
- 1.1: Snap insert (Spare part-nr. 0538600M)
- 2: Headpart (Spare part-nr. 64368000)
- 2.1: O-Ring Ø18,2 x Ø1,7 (Spare part-nr. 0392400M)
- 3: Screw coupling (Spare part-nr. 46460000)
- 4: Shield for cross handle (Spare part-nr. 46116000)
- 5: Lever (Spare part-nr. 46653000)
- 6: Cartridge (Spare part-nr. 46374000)
- 7: Flow restrictor (Spare part-nr. 64374000)
- 8: Shank mounting kit (Spare part-nr. 46249000)
- 9: Filter Head (Spare part-nr. 64508000)
- 10: Filter (Spare part-nr. 40404000)
- 11: Control unit (Spare part-nr. 64510000)
- 12: Original WAS® T-piece 3/8" (Spare part-nr. 41007000)
- 13: Glass carafe (Spare part-nr. 40405000)*
- 14: Filter (Spare part-nr. 40430000)*
- 15: Filter (Spare part-nr. 40412000)*
- 16: Shorter mixed water lever (Spare part-nr. 40621000)*
- 17: Mounting wrench (Spare part-nr. 19017000)*

* Optional accessories

33 249 000 GROHE BLUE PURE STARTER KIT



SPARE PARTS, July 2008 – June 2012

- 1: Handle (Spare part-nr. 46652000)
- 1.1: Snap insert (Spare part-nr. 0538600M)
- 2: Headpart (Spare part-nr. 64368000)
- 2.1: O-Ring Ø18,2 x Ø1,7 (Spare part-nr. 0392400M)
- 3: Ring (Spare part-nr. 04456000)
- 4: Shield for cross handle (Spare part-nr. 46116000)
- 5: Lever (Spare part-nr. 46653000)
- 6: Cartridge (Spare part-nr. 46374000)
- 7: Flow restrictor (Spare part-nr. 64374000)
- 8: Shank mounting kit (Spare part-nr. 46249000)
- 9: Filter Head (Spare part-nr. 64508000)
- 10: Filter (Spare part-nr. 40404000)
- 11: Control unit (Spare part-nr. 64510000)
- 12: Glass carafe (Spare part-nr. 40405000)*
- 14: Filter (Spare part-nr. 40412000)*
- 15: Socket Spanner (Spare part-nr. 19332000)*
- 15: Filter (Spare part-nr. 40430000)*
- 16: Mounting wrench (Spare part-nr. 19017000)*

* Optional accessories