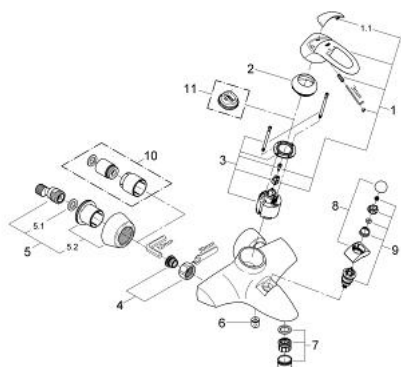


32 306 000 CHIARA SINGLE-LEVER BATH/SHOWER MIXER 1/2"

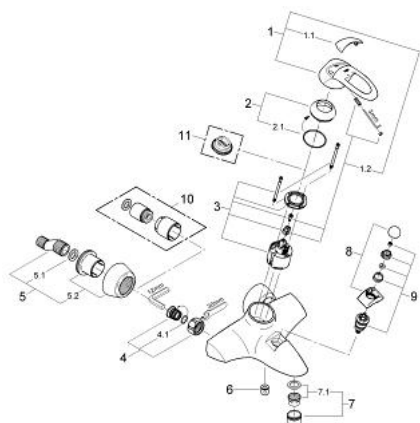


SPARE PARTS, January 2008 – now

- 1: Lever (Spare part-nr. 46527IP0)
- 1.1: Cover Cap (Spare part-nr. 11265P00)
- 2: Shield for cross handle (Spare part-nr. 46449000)
- 3: Cartridge (Spare part-nr. 46048000)
- 4: Screw joint (Spare part-nr. 45044000)
- 5: S-union (Spare part-nr. 12058000)
- 5.1: Sealing washer (Spare part-nr. 0138600M)
- 5.2: Covering escutcheon (Spare part-nr. 45545000)
- 6: Non-return valve (Spare part-nr. 08565000)
- 7: Flow restrictor (Spare part-nr. 13927000)
- 8: Diverter knob (Spare part-nr. 46529000)
- 9: Automatic diverter (Spare part-nr. 47456000)
- 10: Extension 30 (Spare part-nr. 46238000)*
- 11: Temperature limiter (Spare part-nr. 46308000)*

* Optional accessories

32 306 000 CHIARA SINGLE-LEVER BATH/SHOWER MIXER 1/2"



SPARE PARTS, January 2002 – January 2008

- 1: Lever (Spare part-nr. 46527IP0)
 - 1.1: Cover Cap (Spare part-nr. 11265P00)
 - 2: Shield for cross handle (Spare part-nr. 46449000)
 - 2.1: O-Ring Ø43 x Ø2 (Spare part-nr. 0531800M)
 - 3: Cartridge (Spare part-nr. 46048000)
 - 4: Screw joint (Spare part-nr. 45044000)
 - 4.1: O-Ring Ø15 x Ø2 (Spare part-nr. 0311900M)
 - 5: S-union (Spare part-nr. 12058000)
 - 5.1: Sealing washer (Spare part-nr. 0138600M)
 - 5.2: Covering escutcheon (Spare part-nr. 45545000)
 - 6: Non-return valve (Spare part-nr. 08565000)
 - 7: Flow restrictor (Spare part-nr. 13927000)
 - 7.1: Repl.kit f.aerator M28x1 (Spare part-nr. 45029000)
 - 8: Diverter knob (Spare part-nr. 46529000)
 - 9: Diverter (Spare part-nr. 46530000)
 - 10: Extension 30 (Spare part-nr. 46238000)*
 - 11: Temperature limiter (Spare part-nr. 46308000)*
- * Optional accessories