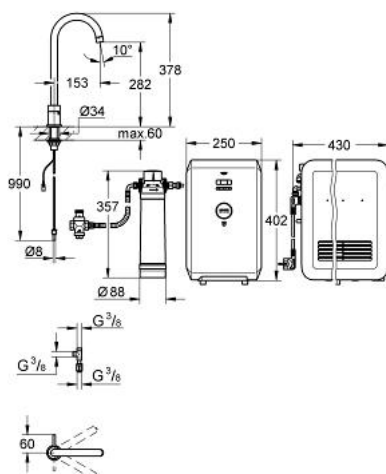


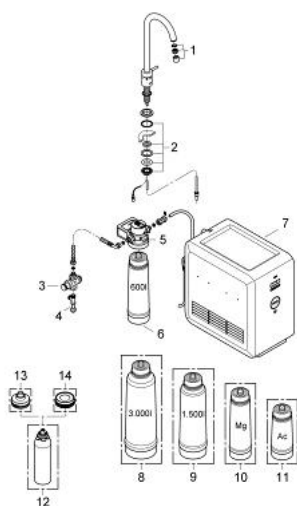
31 384 000 GROHE BLUE CHILLED STARTER KIT



PRODUCT DESCRIPTION

- Colour: Chrome
- Consisting of:
 - GROHE Blue Mono mixer with filter function
 - monobloc installation
 - separate handle for 3 types of filtered and chilled table water
 - unchilled, medium chilled, full chilled
 - GROHE Long-Life finish
 - swivel tubular spout
 - swivel area 140°
- flexible connection hoses
- GROHE Blue Pure Cube
- 180 Watt cooling unit, 230 V, 50 Hz
- type of protection IP 21
- 6 V DC to filter change display unit
- adjustable for 600 litre, 1500 litre or 3000 litre filter cartridges
- CE approved
- GROHE Blue size S filter, filter head with flexible adjustment
- Min. recommended pressure 2.0 bar

31 384 000 GROHE BLUE CHILLED STARTER KIT



SPARE PARTS, May 2013 – now

- 1: Flow restrictor (Spare part-nr. 13999000)
 - 2: Screw coupling (Spare part-nr. 48201000)
 - 3: Pressure reducing valve (Spare part-nr. 40452000)
 - 4: Original WAS® T-piece 3/8" (Spare part-nr. 41007000)
 - 5: Filter Head (Spare part-nr. 64508001)
 - 6: Filter S-Size (Spare part-nr. 40404001)
 - 7: Chiller (Spare part-nr. 40693000)
 - 8: Filter L-Size (Spare part-nr. 40412001)*
 - 9: Filter M-Size (Spare part-nr. 40430001)*
 - 10: Magnesium+ Filter (Spare part-nr. 40691001)*
 - 11: Activated carbon filter (Spare part-nr. 40547001)*
 - 12: Cleaning cartridge (Spare part-nr. 40434001)*
 - 13: Cleaning cartridge adapter (Spare part-nr. 40694000)*
 - 14: Cleaning cartridge for adapter set (Spare part-nr. 40699000)*
- * Optional accessories