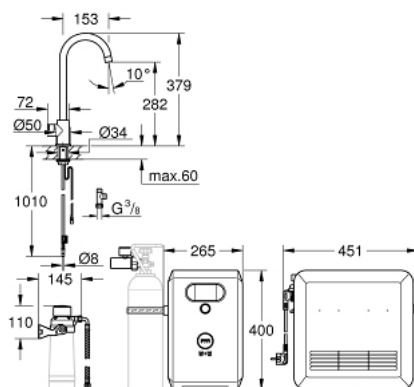


## 31 302 002 GROHE BLUE PROFESSIONAL C-SPOUT KIT



### PRODUCT DESCRIPTION

- Consisting of:
- **GROHE Blue** Mono mixer with filter function
- monobloc installation
- C-spout
- touch operated for 3 types of filtered and chilled water
- still, medium, sparkling
- **GROHE StarLight** chrome finish
- swivel tubular spout
- swivel area 150°
- **GROHE Blue Professional** cooler
- delivers 12 liters of chilled sparkling water per hour
- colour display with push and turn control
- 270 Watt cooling unit, 230 V, 50 Hz
- sound level in standby 46 dB(A)
- type of protection IP 21
- CE approved
- requires ventilation holes in the bottom of the kitchen cabinet
- software set-up and monitoring of filter and CO2 capacity possible via GROHE Ondus app
- push notifications at low filter resp. CO2 capacity
- additional monitoring via GROHE Blue Professional Browser-Monitor possible
- with Bluetooth 4.0\* and WIFI interface for wireless data communication
- for Apple\*\* and Android devices
- Bluetooth range (max. 10 m) varies depending on materials used and walls between transmitter and receiver
- filter head with flexible water hardness adjustment
- GROHE Blue filter, CO2 bottle and cleaning cartridge are not included in the delivery and have to be ordered separately
- suitable filters:
  - filter S-size, capacity 600 l at 20° dKH (40 404 001)
  - filter M-size, capacity 1500 l at 20° dKH (40 430 001)
  - filter L-size, capacity 2500 l at 20° dKH (40 412 001)
  - activated carbon filter, capacity 3000 l (40 547 001)
  - Magnesium + Zinc filter, capacity 400 l at 17° dGH (40 691 002)

### • System requirements Apple

iPhone with iOS 12.0 or higher

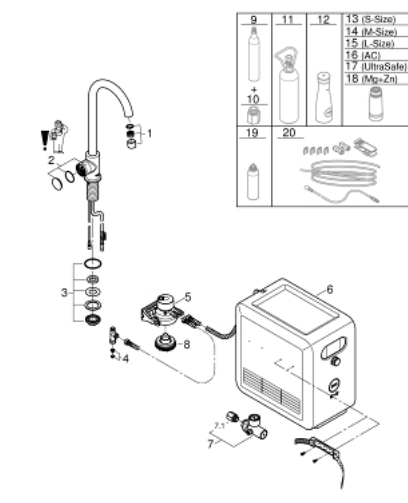
### System requirements Android

smart phone with Android 6.0 or higher

Mobile devices and GROHE Watersystems App\*\*\* are not included in delivery and have to be ordered separately via an authorised Apple store/store/iTunes or Google Play store.

PAGE 1/2

## 31 302 002 GROHE BLUE PROFESSIONAL C-SPOUT KIT



### SPARE PARTS, March 2017 – now

- 1: Flow restrictor (Order-nr. 46895000)
  - 2: Operating unit (Order-nr. 46958000)
  - 3: Screw coupling (Order-nr. 48201000)
  - 4: strainer (Order-nr. 47576000)
  - 5: Filter Head (Order-nr. 64508001)
  - 6: Cooler and carbonizer (Order-nr. 40554001)
  - 7: Pressure indicator (Order-nr. 46717000)
  - 7.1: CO<sub>2</sub> adapter (Order-nr. 40962000)
  - 8: Starter kit 425 g CO<sub>2</sub> bottles (4 pieces) (Order-nr. 40422000)\*
  - 9: CO<sub>2</sub> adapter (Order-nr. 40962000)\*
  - 10: Starter kit 2 kg CO<sub>2</sub> bottle (Order-nr. 40423000)\*
  - 11: Glass carafe (Order-nr. 40405000)\*
  - 12: Filter S-Size (Order-nr. 40404001)\*
  - 13: Filter M-Size (Order-nr. 40430001)\*
  - 14: Filter L-Size (Order-nr. 40412001)\*
  - 15: Activated carbon filter (Order-nr. 40547001)\*
  - 16: UltraSafe filter (Order-nr. 40575001)\*
  - 17: Magnesium+ Filter (Order-nr. 40691001)\*
  - 18: Cleaning cartridge (Order-nr. 40434001)\*
  - 19: Cleaning cartridge adapter (Order-nr. 40694000)\*
  - 20: Extension set (Order-nr. 40843000)\*
- \* Optional accessories