

31 302 002 GROHE BLUE PROFESSIONAL C-SPOUT KIT WITH MONO TAP



PRODUCT DESCRIPTION (1/2)

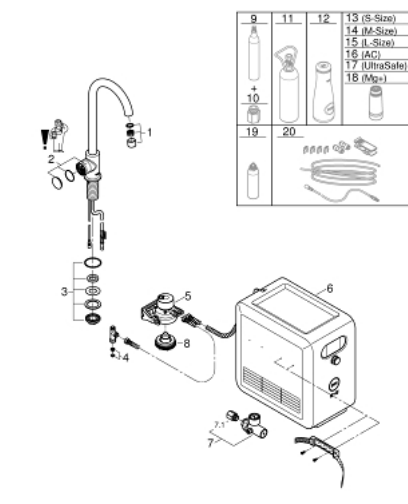
- Colour: Chrome
- Consisting of:
 - GROHE Blue Mono mixer with filter function
 - monobloc installation
 - C-spout
- touch operated for 3 types of filtered and chilled water
- still, medium, sparkling
- GROHE Long-Life finish
- swivel tubular spout
- swivel area 150°
- GROHE Blue Professional cooler
- delivers 12 liters of chilled sparkling water per hour
- colour display with push and turn control
- 270 Watt cooling unit, 230 V, 50 Hz
- sound level in standby 46 dB(A)
- type of protection IP 21
- CE approved
- requires ventilation holes in the bottom of the kitchen cabinet
- software set-up and monitoring of filter and CO₂ capacity possible via GROHE Watersystems app
- push notifications at low filter resp. CO₂ capacity
- with Bluetooth 4.0* and WIFI interface for wireless data communication
- for Apple** and Android devices
- Bluetooth range (max. 10 m) varies depending on materials used and walls between transmitter and receiver
- cleaning cartridge adapter, for use with GROHE Blue cleaning cartridge 40 434 001
- CO₂ pressure indicator
- filter head with flexible water hardness adjustment
- GROHE Blue filter, CO₂ bottle and cleaning cartridge are not included in the delivery and have to be ordered separately

31 302 002 GROHE BLUE PROFESSIONAL C-SPOUT KIT WITH MONO TAP

PRODUCT DESCRIPTION (2/2)

- suitable filters:- filter S-size, capacity 600 l at 20° dKH (40 404 001)- filter M-size, capacity 1500 l at 20° dKH (40 430 001)- filter L-size, capacity 2500 l at 20° dKH (40 412 001)- activated carbon filter, capacity 3000 l (40 547 001)- Ultrasafe filter, capacity 3000 l (40 575 002)- Magnesium + Zinc filter, capacity 400 l at 17° dGH (40 691 002)
- System requirements Apple iPhone with iOS 14.0 or higher System requirements Android smart phone with Android 10.0 or higher Mobile devices and GROHE Watersystems App*** are not included in delivery and have to be ordered separately via an authorised Apple store/store/iTunes or Google Play store.* The Bluetooth word mark and logos are registered trademarks owned by Bluetooth SIG, Inc. and any use of such marks by Grohe AG is under license. Other trademarks and trade names are those of their respective owners.** Apple, the Apple logo, iPod, iPod Touch, iPhone and iTunes are trademarks of Apple Inc., registered in the U.S. and other countries. Apple is not responsible for the function of this device or its compliance with safety and regulatory standards.*** Available for free via iTunes app or Google Play store.

31 302 002 GROHE BLUE PROFESSIONAL C-SPOUT KIT WITH MONO TAP



SPARE PARTS, March 2017 – now

- 1: Flow restrictor (Spare part-nr. 46895000)
- 2: Operating unit (Spare part-nr. 46958000)
- 3: Screw coupling (Spare part-nr. 48201000)
- 4: strainer (Spare part-nr. 47576000)
- 5: Filter Head (Spare part-nr. 64508001)
- 6: Cooler and carbonizer (Spare part-nr. 40554001)
- 7: Pressure indicator (Spare part-nr. 46717000)
- 7.1: CO₂ adapter (Spare part-nr. 40962000)
- 8: Starter kit 425 g CO₂ bottles (4 pieces) (Spare part-nr. 40422000)*
- 9: CO₂ adapter (Spare part-nr. 40962000)*
- 10: Starter kit 2 kg CO₂ bottle (Spare part-nr. 40423000)*
- 11: Glass carafe (Spare part-nr. 40405000)*
- 12: Filter S-Size (Spare part-nr. 40404001)*
- 13: Filter M-Size (Spare part-nr. 40430001)*
- 14: Filter L-Size (Spare part-nr. 40412001)*
- 15: Activated carbon filter (Spare part-nr. 40547001)*
- 16: UltraSafe filter (Spare part-nr. 40575001)*
- 17: Magnesium+ Filter (Spare part-nr. 40691001)*
- 18: Cleaning cartridge (Spare part-nr. 40434001)*
- 19: Cleaning cartridge adapter (Spare part-nr. 40694000)*
- 20: Extension set (Spare part-nr. 40843000)*

* Optional accessories