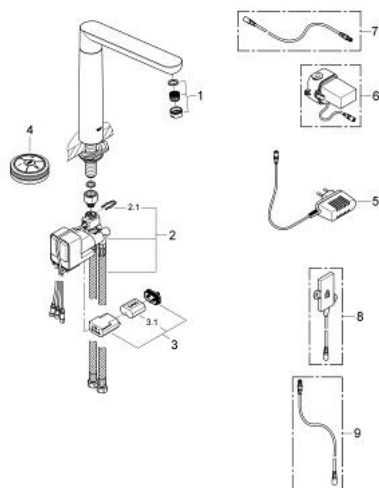


- Colour: Chrome
- includes digital mixing device
- monobloc installation
- Digital Controller - intuitive multifunctional operating unit
- - Wireless technology
- - Temperature and flow control
- - Pause-function
- - Memory function
- - LED ring
- digital mixing device
- - digitally controlled valve
- - integrated temperature sensor
- default setting configurable during installation
- - automatic safety shut-off after 60 sec.
- swivel cast spout
- swivel area 140°
- SpeedClean mousseur
- flexible connection hoses
- incl. plug power supply 65790000
- requires built-in power supply 36 078 000
- min. recommended pressure 1.0 bar

31 247 000 GROHE K7 F-DIGITAL DIGITAL SINK MIXER



SPARE PARTS, July 2010 – now

- 1: Flow restrictor (Spare part-nr. 48173000)
- 2: Mixing device (Spare part-nr. 48163000)
- 2.1: Fixing clamp (Spare part-nr. 6554100M)
- 3: Battery Housing (Spare part-nr. 42393000)
- 3.1: Battery (Spare part-nr. 42886000)
- 4: Digital Controller
- Remote Controller for bath or shower (Spare part-nr. 36309000)
- 5: Plug power supply 230 V (Spare part-nr. 65790000)
- 6: Plug power supply 110-240 V (Spare part-nr. 36078000)*
- 7: Connection wire (Spare part-nr. 47727000)*
- 8: Transceiver (Spare part-nr. 36356000)*
- 9: Connection wire (Spare part-nr. 65815000)*

* Optional accessories