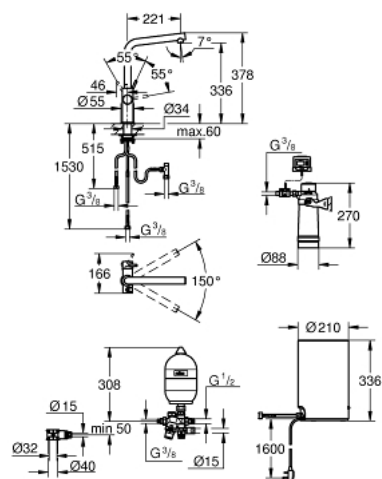


## 30 341 DA1 GROHE RED DUO TAP AND M SIZE BOILER

**PRODUCT DESCRIPTION (1/2)**

- Colour: warm sunset
- Consisting of:
  - GROHE Red Duo single-lever sink mixer
  - monobloc installation
  - L-spout
  - GROHE ChildLock push buttons for kettle hot water
  - TÜV certified triple electronic safeguards against accidental activation of boiling water
  - GROHE Long-Life finish
  - 28 mm ceramic cartridge with GROHE SilkMove
  - insulated tubular spout
  - swivel area 150°
  - separate water ways
- flexible connection hoses
  - connection for GROHE Red boiler
  - GROHE Red boiler M size
  - reservoir for kettle hot and hot water
  - 3 litre 99° C kettle hot water
  - 4 litre total capacity
  - required inlet pressure: 1-7 bar
  - with flexible connection hose and outlet for kettle hot water
  - CE approved
  - power supply 230 V 50 Hz
  - power consumption 2100 W
  - standby power consumption 15 W
  - energy efficiency class A
  - GROHE Blue S-Size filter starter set
  - for protection of the boiler from limescale
  - Capacity 600 L at 20° dKH

Pure Freude  
an Wasser

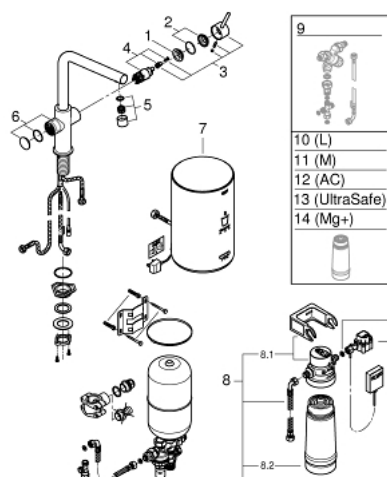


## 30 341 DA1 **GROHE RED DUO TAP AND M SIZE BOILER**

### **PRODUCT DESCRIPTION** (2/2)

- KIWA KUKReg4 Certified

## 30 341 DA1 GROHE RED DUO TAP AND M SIZE BOILER



### SPARE PARTS, March 2018 – now

- 1: retaining ring (Spare part-nr. 07419000)
- 4: Cartridge (Spare part-nr. 46580000)
- 6: Operating unit (Spare part-nr. 46997DA0)
- 7: Boiler Size M (Spare part-nr. 40842001)
- 8: S-size filter starter set (Spare part-nr. 40438001)
- 8.1: Filter Head (Spare part-nr. 64508001)
- 8.2: Filter S-Size (Spare part-nr. 40404001)
- 9: Mixing valve (Spare part-nr. 40841001)\*
- 10: Filter L-Size (Spare part-nr. 40412001)\*
- 11: Filter M-Size (Spare part-nr. 40430001)\*
- 12: Activated carbon filter (Spare part-nr. 40547001)\*
- 13: UltraSafe filter (Spare part-nr. 40575001)\*
- 14: Magnesium+ Filter (Spare part-nr. 40691001)\*

\* Optional accessories