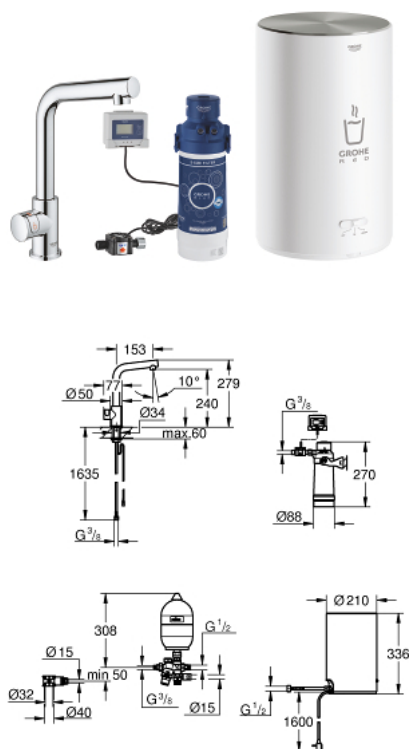


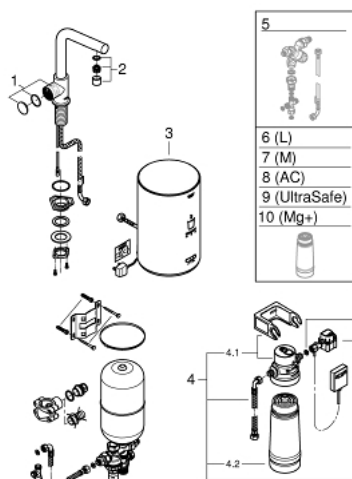
30 329 001 GROHE RED MONO PILLAR TAP AND M SIZE BOILER



PRODUCT DESCRIPTION

- Colour: Chrome
- Consisting of:
- GROHE Red Mono pillar tap
- monobloc installation
- L-spout
- GROHE ChildLock push buttons for kettle hot water
- TÜV certified triple electronic safeguards against accidental activation of boiling water
- GROHE Long-Life finish
- insulated tubular spout
- swivel area 150°
- connection for GROHE Red boiler
- GROHE Red boiler M size
- reservoir for kettle hot and hot water
- 3 litre 99° C kettle hot water
- 4 litre total capacity
- required inlet pressure: 1-7 bar
- with flexible connection hose and outlet for kettle hot water
- CE approved
- power supply 230 V 50 Hz
- power consumption 2100 W
- standby power consumption 15 W
- energy efficiency class A
- GROHE Red filter set
- for protection of the boiler from limescale
- Capacity 600 L at 20° dKH
- 5 phase filter
- KIWA KUKReq4 Certified

30 329 001 GROHE RED MONO PILLAR TAP AND M SIZE BOILER



SPARE PARTS, September 2016 – now

- 1: Operating unit (Spare part-nr. 46997000)
- 2: Flow restrictor (Spare part-nr. 13999000)
- 3: Boiler Size M (Spare part-nr. 40842001)
- 4: S-size filter starter set (Spare part-nr. 40438001)
- 4.1: Filter Head (Spare part-nr. 64508001)
- 4.2: Filter S-Size (Spare part-nr. 40404001)
- 5: Mixing valve (Spare part-nr. 40841001)*
- 6: Filter L-Size (Spare part-nr. 40412001)*
- 7: Filter M-Size (Spare part-nr. 40430001)*
- 8: Activated carbon filter (Spare part-nr. 40547001)*
- 9: UltraSafe filter (Spare part-nr. 40575001)*
- 10: Magnesium+ Filter (Spare part-nr. 40691001)*

* Optional accessories