

## 30 327 DA1 GROHE RED DUO TAP AND M SIZE BOILER



### PRODUCT DESCRIPTION (1/2)

- Colour: warm sunset
- Consisting of:
  - GROHE Red Duo single-lever sink mixer
  - monobloc installation
  - L-spout
  - GROHE ChildLock push buttons for kettle hot water
  - TÜV certified triple electronic safeguards against accidental activation of boiling water
  - GROHE Long-Life finish
  - 28 mm ceramic cartridge with GROHE SilkMove
  - insulated tubular spout
  - swivel area 150°
  - separate water ways
- flexible connection hoses
- connection for GROHE Red boiler
- GROHE Red boiler M size
- reservoir for kettle hot and hot water
- 3 litre 99° C kettle hot water
- 4 litre total capacity
- required inlet pressure: 1-7 bar
- with flexible connection hose and outlet for kettle hot water
- CE approved
- power supply 230 V 50 Hz
- power consumption 2100 W
- standby power consumption 15 W
- energy efficiency class A
- GROHE Blue S-Size filter starter set
- for protection of the boiler from limescale
- Capacity 600 L at 20° dKH

Pure Freude  
an Wasser

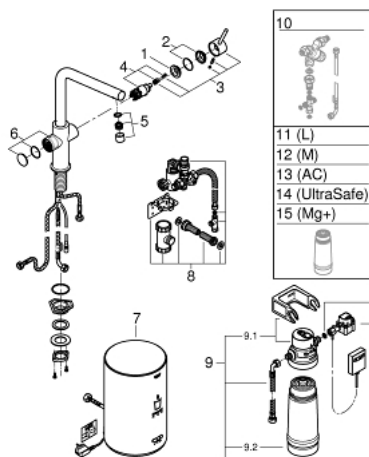


## 30 327 DA1 **GROHE RED DUO TAP AND M SIZE BOILER**

### **PRODUCT DESCRIPTION** (2/2)

- KIWA KUKReg4 Certified

## 30 327 DA1 GROHE RED DUO TAP AND M SIZE BOILER



### SPARE PARTS, March 2018 – now

- 1: retaining ring (Spare part-nr. 07419000)
- 4: Cartridge (Spare part-nr. 46580000)
- 6: Operating unit (Spare part-nr. 46997DA0)
- 7: Boiler Size M (Spare part-nr. 40830001)
- 8: Safety group (Spare part-nr. 48371000)
- 9: S-size filter starter set (Spare part-nr. 40438001)
- 9.1: Filter Head (Spare part-nr. 64508001)
- 9.2: Filter S-Size (Spare part-nr. 40404001)
- 10: Mixing valve (Spare part-nr. 40841001)\*
- 11: Filter L-Size (Spare part-nr. 40412001)\*
- 12: Filter M-Size (Spare part-nr. 40430001)\*
- 13: Activated carbon filter (Spare part-nr. 40547001)\*
- 14: UltraSafe filter (Spare part-nr. 40575001)\*
- 15: Magnesium+ Filter (Spare part-nr. 40691001)\*

\* Optional accessories