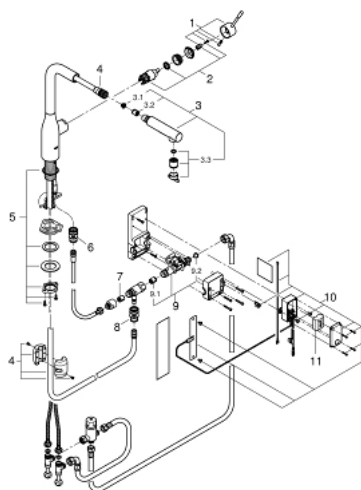


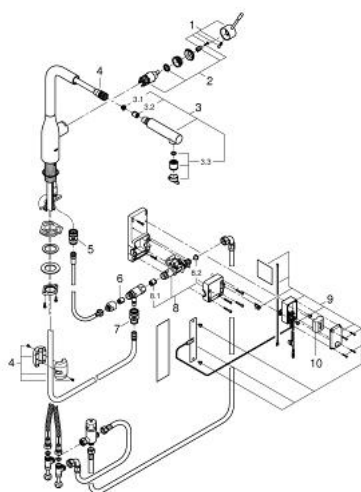
30 311 DC0 ESSENCE FOOT CONTROL ELECTRONIC SINGLE-LEVER SINK MIXER 1/2"



SPARE PARTS, February 2018 – now

- 1: Lever (Spare part-nr. 46927DC0)
- 2: Cartridge (Spare part-nr. 46580000)
- 3: Hand shower (Spare part-nr. 46926DC0)
- 3.1: Strainer (Spare part-nr. 0676800M)
- 3.2: Non-return valve (Spare part-nr. 08565000)
- 3.3: Flow straightener (Spare part-nr. 48275000)
- 4: Hose for sink mixer with pull-out dual spray or mousseur (Spare part-nr. 48293000)
- 5: Shank fastening assembly (Spare part-nr. 48384000)
- 7: Non-return valve (Spare part-nr. 08565000)
- 8: Quick coupling (Spare part-nr. 46338000)
- 9: Solenoid valve (Spare part-nr. 48213000)
- 9.1: Non-return valve (Spare part-nr. 08565000)
- 9.2: Strainer (Spare part-nr. 42395000)
- 10: Control unit (Spare part-nr. 48304000)
- 11: Battery (Spare part-nr. 42886000)

30 311 DC0 ESSENCE FOOT CONTROL ELECTRONIC SINGLE-LEVER SINK MIXER 1/2"



SPARE PARTS, July 2015 – February 2018

- 1: Lever (Spare part-nr. 46927DC0)
- 2: Cartridge (Spare part-nr. 46580000)
- 3: Hand shower (Spare part-nr. 46926DC0)
- 3.1: Strainer (Spare part-nr. 0676800M)
- 3.2: Non-return valve (Spare part-nr. 08565000)
- 3.3: Flow straightener (Spare part-nr. 48275000)
- 4: Hose for sink mixer with pull-out dual spray or mousseur (Spare part-nr. 48293000)
- 5: Non-return valve (Spare part-nr. 08565000)
- 6: Quick coupling (Spare part-nr. 46338000)
- 7: Solenoid valve (Spare part-nr. 48213000)
- 8: Non-return valve (Spare part-nr. 08565000)
- 8.1: Strainer (Spare part-nr. 42395000)
- 8.2: Solenoid valve (Spare part-nr. 42395000)
- 9: Control unit (Spare part-nr. 48304000)
- 10: Battery (Spare part-nr. 42886000)