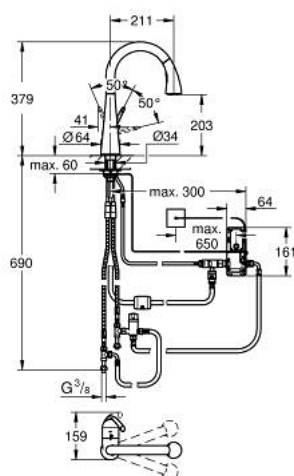


30 219 001 ZEDRA TOUCH ELECTRONIC SINGLE-LEVER SINK MIXER 1/2"

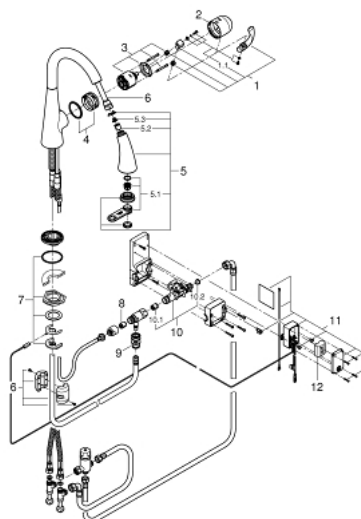


PRODUCT DESCRIPTION

- Colour: Chrome
- Touch: activation of water via skin contact
- battery supply 6 V lithium-battery, type CR-P2
- CE approved
- solenoid valve
- automatically stops after 60 sec. (factory set)
- type of protection IP 44
- GROHE SilkMove 46 mm ceramic cartridge
- Lead and Nickel Free Inner Water Ways
- pull-out dual spray control - switches between regular flow and spray
- diverter: mousseur/shower jet
- automatic return to mousseur
- adjustable flow rate limiter
- swivel tubular spout
- swivel area 360°
- protected against backflow
- flexible connection hoses
- rapid installation system



30 219 001 ZEDRA TOUCH ELECTRONIC SINGLE-LEVER SINK MIXER 1/2"



SPARE PARTS, May 2015 – now

- 1: Lever (Spare part-nr. 46654000)
- 1.1: Fixing set (Spare part-nr. 46310000)
- 2: Shield for cross handle (Spare part-nr. 46655000)
- 3: Cartridge (Spare part-nr. 46048000)
- 4: Guide and slide ring (Spare part-nr. 46632V00)
- 5: Hand shower (Spare part-nr. 46875NC0)
- 5.1: Flow restrictor (Spare part-nr. 46711000)
- 5.2: Non-return valve (Spare part-nr. 08565000)
- 5.3: Strainer (Spare part-nr. 0676800M)
- 6: Hose for sink mixer with pull-out dual spray or mousseur (Spare part-nr. 48293000)
- 7: Shank mounting kit (Spare part-nr. 46345000)
- 8: Non-return valve (Spare part-nr. 08565000)
- 9: Quick coupling (Spare part-nr. 46338000)
- 10: Solenoid valve (Spare part-nr. 48213000)
- 10.1: Non-return valve (Spare part-nr. 08565000)
- 10.2: Strainer (Spare part-nr. 42395000)
- 11: Control unit (Spare part-nr. 48214000)
- 12: Battery (Spare part-nr. 42886000)