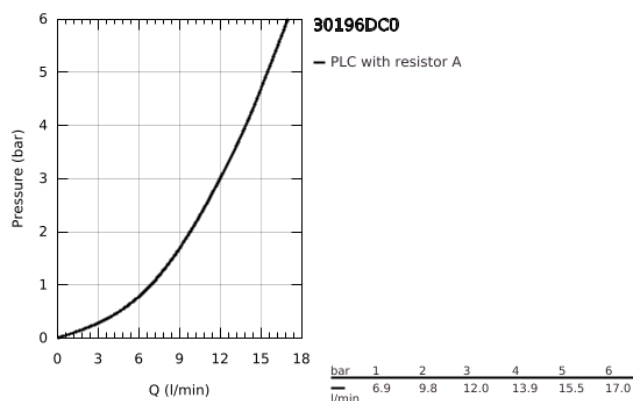
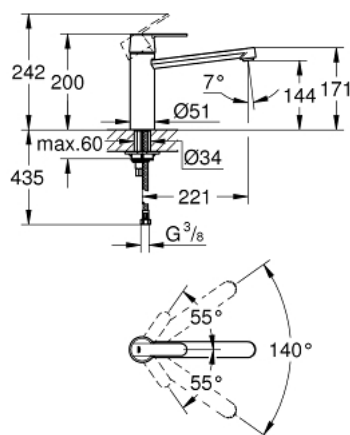


## 30 196 DC0 GET SINGLE-LEVER SINK MIXER 1/2"

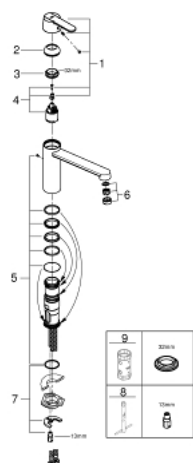


### PRODUCT DESCRIPTION

- Colour: supersteel
- medium spout
- GROHE SilkMove 35 mm ceramic cartridge
- monobloc installation
- GROHE Long-Life finish
- adjustable flow rate limiter
- swivel tubular spout
- swivel area 140°
- mousseur
- flexible connection hoses
- GROHE FastFixation installation system
- GROHE QuickTool included



## 30 196 DC0 **GET SINGLE-LEVER SINK MIXER 1/2"**



### **SPARE PARTS**, December 2012 – now

- 2: Shield for cross handle (Spare part-nr. 46492DC0)
- 3: Ring (Spare part-nr. 46759000)
- 4: Cartridge (Spare part-nr. 46374000)
- 5: Replacement kit for seal (Spare part-nr. 46760000)
- 6: Flow restrictor (Spare part-nr. 13929DC0)
- 7: Shank mounting kit (Spare part-nr. 46249000)
- 8: Mounting wrench (Spare part-nr. 19017000)\*
- 9: Socket Spanner (Spare part-nr. 19332000)\*

\* Optional accessories