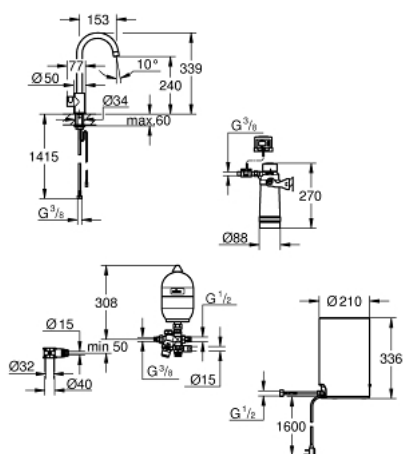


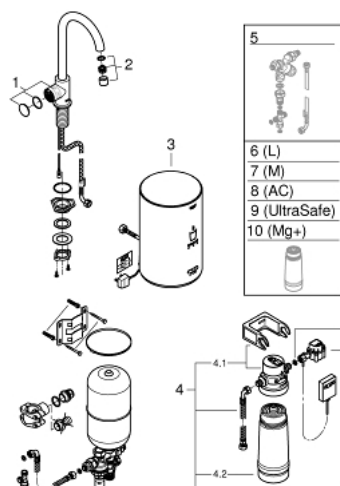
## 30 060 001 GROHE RED MONO PILLAR TAP AND M SIZE BOILER



### PRODUCT DESCRIPTION

- Colour: Chrome
- Consisting of:
  - GROHE Red Mono pillar tap
  - monobloc installation
  - C-spout
  - GROHE ChildLock push buttons for kettle hot water
  - TÜV certified triple electronic safeguards against accidental activation of boiling water
  - GROHE Long-Life finish
  - insulated tubular spout
  - swivel area 150°
  - connection for GROHE Red boiler
  - GROHE Red boiler M size
  - reservoir for kettle hot and hot water
  - 3 litre 99° C kettle hot water
  - 4 litre total capacity
  - required inlet pressure: 1-7 bar
  - with flexible connection hose and outlet for kettle hot water
  - CE approved
  - power supply 230 V 50 Hz
  - power consumption 2100 W
  - standby power consumption 15 W
  - energy efficiency class A
  - GROHE Blue S-Size filter starter set
  - for protection of the boiler from limescale
  - Capacity 600 L at 20° dKH
  - KIWA KUKReg4 Certified

## 30 060 001 GROHE RED MONO PILLAR TAP AND M SIZE BOILER



### SPARE PARTS, August 2013 – now

- 1: Operating unit (Spare part-nr. 46997000)
- 2: Flow restrictor (Spare part-nr. 13999000)
- 3: Boiler Size M (Spare part-nr. 40842001)
- 4: S-size filter starter set (Spare part-nr. 40438001)
- 4.1: Filter Head (Spare part-nr. 64508001)
- 4.2: Filter S-Size (Spare part-nr. 40404001)
- 5: Mixing valve (Spare part-nr. 40841001)\*
- 6: Filter L-Size (Spare part-nr. 40412001)\*
- 7: Filter M-Size (Spare part-nr. 40430001)\*
- 8: Activated carbon filter (Spare part-nr. 40547001)\*
- 9: UltraSafe filter (Spare part-nr. 40575001)\*
- 10: Magnesium+ Filter (Spare part-nr. 40691001)\*

\* Optional accessories