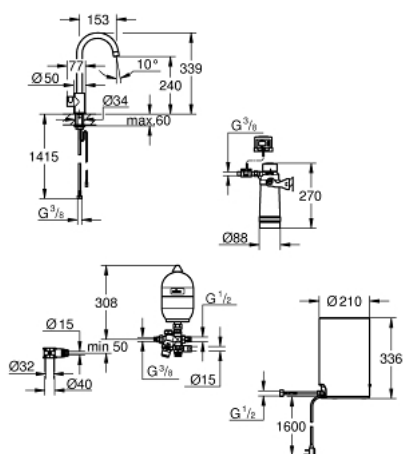


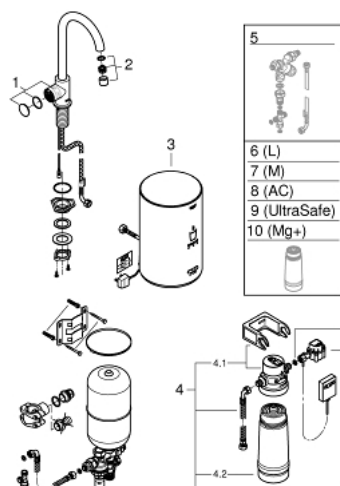
30 060 001 GROHE RED MONO PILLAR TAP AND M SIZE BOILER



PRODUCT DESCRIPTION

- Colour: Chrome
- Consisting of:
 - GROHE Red Mono pillar tap
 - monobloc installation
 - C-spout
 - GROHE ChildLock push buttons for kettle hot water
 - TÜV certified triple electronic safeguards against accidental activation of boiling water
 - GROHE Long-Life finish
 - insulated tubular spout
 - swivel area 150°
 - connection for GROHE Red boiler
 - GROHE Red boiler M size
 - reservoir for kettle hot and hot water
 - 3 litre 99° C kettle hot water
 - 4 litre total capacity
 - required inlet pressure: 1-7 bar
 - with flexible connection hose and outlet for kettle hot water
 - CE approved
 - power supply 230 V 50 Hz
 - power consumption 2100 W
 - standby power consumption 15 W
 - energy efficiency class A
 - GROHE Blue S-Size filter starter set
 - for protection of the boiler from limescale
 - Capacity 600 L at 20° dKH
 - KIWA KUKReg4 Certified

30 060 001 GROHE RED MONO PILLAR TAP AND M SIZE BOILER



SPARE PARTS, August 2013 – now

- 1: Operating unit (Spare part-nr. 46997000)
- 2: Flow restrictor (Spare part-nr. 13999000)
- 3: Boiler Size M (Spare part-nr. 40842001)
- 4: S-size filter starter set (Spare part-nr. 40438001)
- 4.1: Filter Head (Spare part-nr. 64508001)
- 4.2: Filter S-Size (Spare part-nr. 40404001)
- 5: Mixing valve (Spare part-nr. 40841001)*
- 6: Filter L-Size (Spare part-nr. 40412001)*
- 7: Filter M-Size (Spare part-nr. 40430001)*
- 8: Activated carbon filter (Spare part-nr. 40547001)*
- 9: UltraSafe filter (Spare part-nr. 40575001)*
- 10: Magnesium+ Filter (Spare part-nr. 40691001)*

* Optional accessories