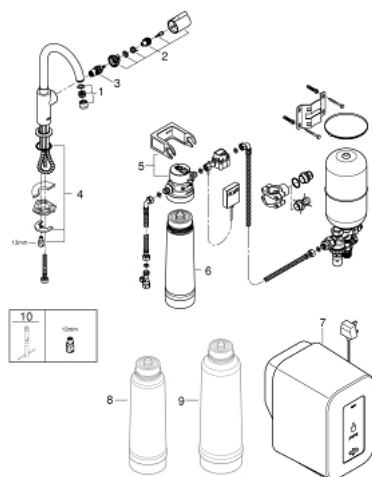


30 060 000 GROHE RED MONO PILLAR TAP AND SINGLE-BOILER (4 LITERS)

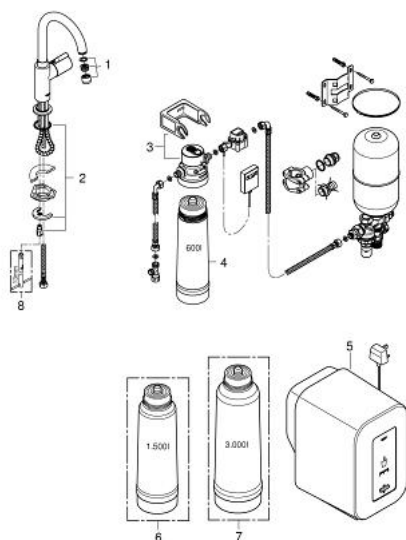


SPARE PARTS, February 2017 – now

- 1: Flow restrictor (Spare part-nr. 13999000)
- 2: Handle (Spare part-nr. 46985000)
- 3: Headpart (Spare part-nr. 46678000)
- 4: Shank mounting kit (Spare part-nr. 46249000)
- 5: Filter Head (Spare part-nr. 64508001)
- 6: Filter S-Size (Spare part-nr. 40404001)
- 7: Single boiler (EU) (Spare part-nr. 40420000)
- 8: Filter M-Size (Spare part-nr. 40430001)*
- 9: Filter L-Size (Spare part-nr. 40412001)*
- 10: Mounting wrench (Spare part-nr. 19017000)*

* Optional accessories

30 060 000 GROHE RED MONO PILLAR TAP AND SINGLE-BOILER (4 LITERS)

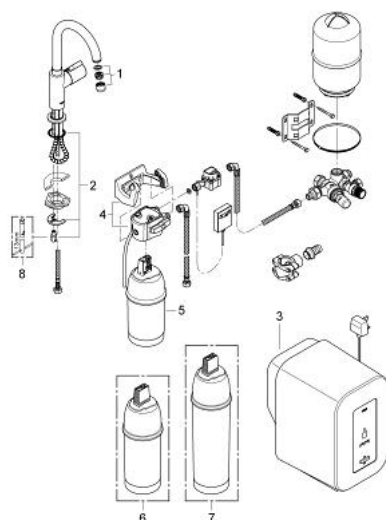


SPARE PARTS, April 2014 – February 2017

- 1: Flow restrictor (Spare part-nr. 13999000)
- 2: Shank mounting kit (Spare part-nr. 46249000)
- 3: Single boiler (EU) (Spare part-nr. 40420000)
- 4: Filter Head (Spare part-nr. 64508001)
- 5: Filter S-Size (Spare part-nr. 40404001)
- 6: Filter M-Size (Spare part-nr. 40430001)*
- 7: Filter L-Size (Spare part-nr. 40412001)*
- 8: Mounting wrench (Spare part-nr. 19017000)*

* Optional accessories

30 060 000 GROHE RED MONO PILLAR TAP AND SINGLE-BOILER (4 LITERS)

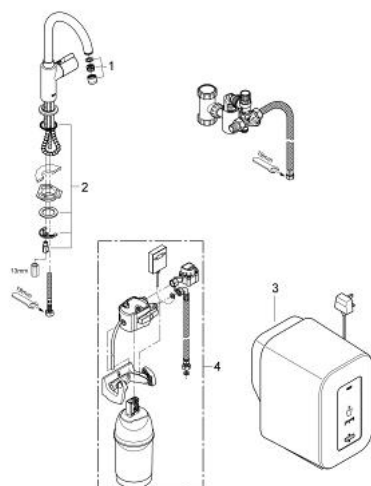


SPARE PARTS, September 2011 – April 2014

- 1: Flow restrictor (Spare part-nr. 13999000)
- 2: Shank mounting kit (Spare part-nr. 46249000)
- 3: Single boiler (EU) (Spare part-nr. 40420000)
- 4: Filter Head (Spare part-nr. 64508000)
- 5: Filter (Spare part-nr. 40404000)
- 6: Filter (Spare part-nr. 40430000)*
- 7: Filter (Spare part-nr. 40412000)*
- 8: Mounting wrench (Spare part-nr. 19017000)*

* Optional accessories

30 060 000 GROHE RED MONO PILLAR TAP AND SINGLE-BOILER (4 LITERS)



SPARE PARTS, November 2009 – September 2011

- 1: Handle (Spare part-nr. 46679000)
- 2: Headpart (Spare part-nr. 46678000)
- 3: Flow restrictor (Spare part-nr. 13999000)
- 4: Shank mounting kit (Spare part-nr. 46249000)
- 5: Filter with filter head (Spare part-nr. 40438000)*
- 5: Single boiler (EU) (Spare part-nr. 40420000)

* Optional accessories