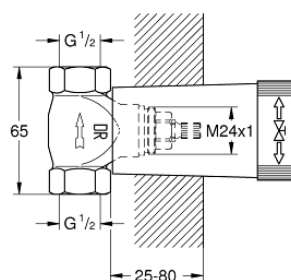


29 800 000 **CONCEALED STOP-VALVE, 1/2"**

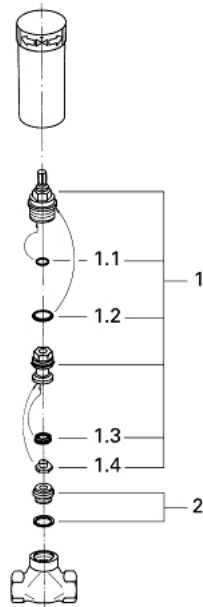


**PRODUCT DESCRIPTION**

- pre-assembled headpart 1/2"
- short spindle
- protection sleeve
- threaded union 1/2"
- DR-brass



29 800 000 **CONCEALED STOP-VALVE, 1/2"**



**SPARE PARTS**, January 1986 – now

- 1: Headpart 1/2" (Spare part-nr. 07146000)
- 1.1: O-Ring Ø6 x Ø2 (Spare part-nr. 0128300M)
- 1.2: O-Ring Ø18,2 x Ø1,7 (Spare part-nr. 0392400M)
- 1.3: Sealing washer (Spare part-nr. 0529100M)
- 1.4: Screw (Spare part-nr. 0529100M)
- 2: Seat (Spare part-nr. 45023000)