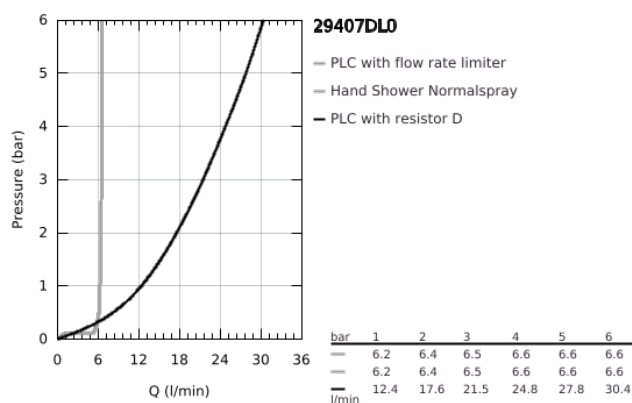
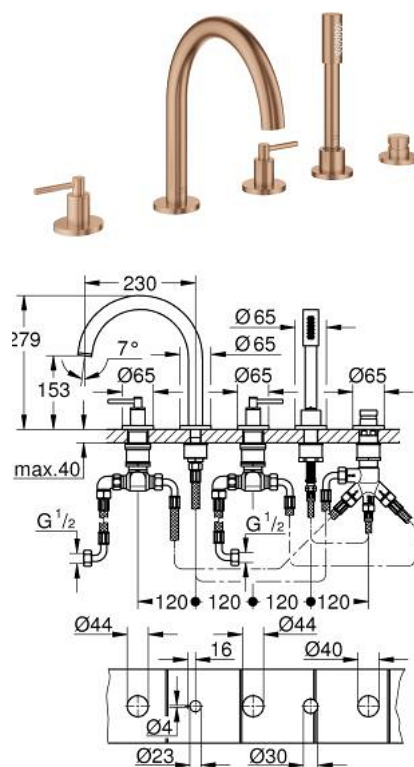


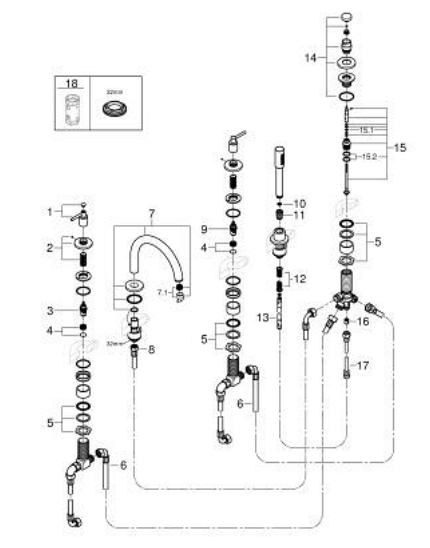
## 29 407 DL0 ATRIO 5-HOLE BATH/SHOWER COMBINATION



### PRODUCT DESCRIPTION

- Colour: brushed warm sunset
- ceramic headparts 1/2", 90°
- GROHE Long-Life finish
- Consisting of:
  - pre-assembled spout fixing
  - with lever handles
  - bath spout with mousseur and diverter bath/shower
  - hand shower Rainshower Aqua Stick 6.5 l/min
  - shower hose 2000 mm
- flexible connection hoses
- connection for shower hose
- protected against backflow
- can be used with 29 037 002
- Two different sets of caps included. One set with "H" and "C" marking, one set without marking.

## 29 407 DL0 ATRIO 5-HOLE BATH/SHOWER COMBINATION



### SPARE PARTS, November 2022 – now

- 1: Lever handle bath (Spare part-nr. 14218DL0)
- 2: escutcheon (Spare part-nr. 101351DL00)
- 3: Ceramic headpart 3/4", 180° (Spare part-nr. 45888000)
- 4: renewable seat set 3/4" (Spare part-nr. 45345000)
- 5: Repl.kit f.shank fastening 3/4" (Spare part-nr. 45444000)
- 6: Connecting hose (Spare part-nr. 48019000)
- 7: spout (Spare part-nr. 101350DL00)
- 7.1: Flow restrictor (Spare part-nr. 13926000)
- 8: Connecting hose (Spare part-nr. 48018000)
- 9: Ceramic headpart 3/4", 180° (Spare part-nr. 45887000)
- 10: Strainer (Spare part-nr. 0700200M)
- 11: taper nut (Spare part-nr. 08864DL0)
- 12: Compression spring (Spare part-nr. 00869000)
- 13: Metal hose (Spare part-nr. 28146000)
- 14: Diverter knob (Spare part-nr. 48411DL0)
- 15: Diverter (Spare part-nr. 45443000)
- 15.1: O-Ring Ø6 x Ø2 (Spare part-nr. 0128300M)
- 15.2: O-Ring (Spare part-nr. 0120500M)
- 16: Non-return valve (Spare part-nr. 08565000)
- 17: Connecting hose (Spare part-nr. 07300000)
- 18: Socket Spanner (Spare part-nr. 19332000)\*

\* Optional accessories