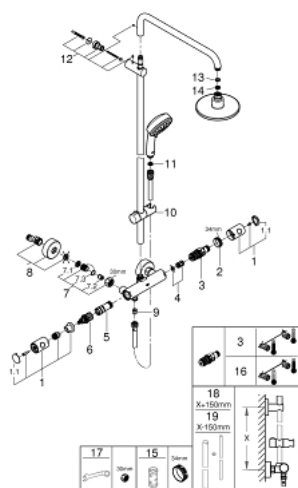


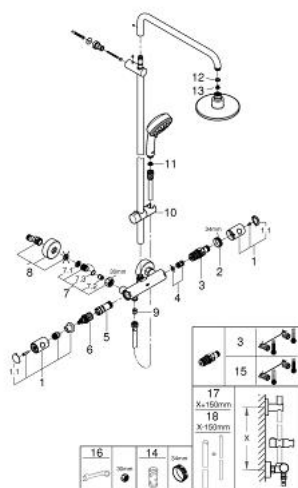
27 922 000 TEMPESTA COSMOPOLITAN 160 SHOWER SYSTEM WITH THERMOSTAT FOR WALL MOUNTING



SPARE PARTS, April 2018 – now

- 1: Metal handle 1/2" (Spare part-nr. 47984000)
 - 1.1: Cover Cap (Spare part-nr. 6458500M)
 - 2: retaining ring (Spare part-nr. 47743000)
 - 3: Thermostatic compact cartridge 1/2" (Spare part-nr. 47439000)
 - 4: Sound absorber (Spare part-nr. 47398000)
 - 5: Water flow (Spare part-nr. 47751000)
 - 6: Aquadimmer (Spare part-nr. 12433000)
 - 7: Non-return valve (Spare part-nr. 47189000)
 - 7.1: Filter (Spare part-nr. 0726400M)
 - 7.2: Non-return valve (Spare part-nr. 08565000)
 - 7.3: O-Ring Ø17 x Ø2 (Spare part-nr. 0305500M)
 - 8: S-union (Spare part-nr. 12662000)
 - 9: Non-return valve (Spare part-nr. 08565000)
 - 10: Sliding piece (Spare part-nr. 12140000)
 - 11: Strainer (Spare part-nr. 0700200M)
 - 12: Outlet shower holder (Spare part-nr. 48423000)
 - 13: Fibre seal dia. Ø 18,5 x Ø 12 x 2 (Spare part-nr. 0138900M)
 - 14: Strainer (Spare part-nr. 0676800M)
 - 15: Socket Spanner (Spare part-nr. 19332000)*
 - 16: GROHE TurboStat cartridge 1/2" (Spare part-nr. 47175000)*
 - 17: Special Spanner (Spare part-nr. 19377000)*
 - 18: Shower system pipe for retrofitting (Spare part-nr. 48053000)*
 - 19: Shower system pipe for retrofitting (Spare part-nr. 48054000)*
- * Optional accessories

27 922 000 TEMPESTA COSMOPOLITAN 160 SHOWER SYSTEM WITH THERMOSTAT FOR WALL MOUNTING

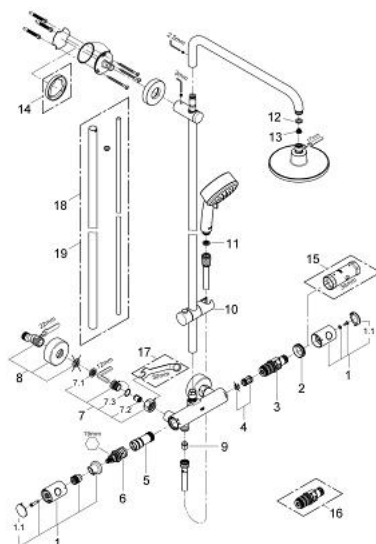


SPARE PARTS, June 2013 – April 2018

- 1: Metal handle 1/2" (Spare part-nr. 47984000)
- 1.1: Cover Cap (Spare part-nr. 6458500M)
- 2: retaining ring (Spare part-nr. 47743000)
- 3: Thermostatic compact cartridge 1/2" (Spare part-nr. 47439000)
- 4: Sound absorber (Spare part-nr. 47398000)
- 5: Water flow (Spare part-nr. 47751000)
- 6: Aquadimmer (Spare part-nr. 12433000)
- 7: Non-return valve (Spare part-nr. 47189000)
- 7.1: Filter (Spare part-nr. 0726400M)
- 7.2: Non-return valve (Spare part-nr. 08565000)
- 7.3: O-Ring Ø17 x Ø2 (Spare part-nr. 0305500M)
- 8: S-union (Spare part-nr. 12662000)
- 9: Non-return valve (Spare part-nr. 08565000)
- 10: Sliding piece (Spare part-nr. 12140000)
- 11: Strainer (Spare part-nr. 0700200M)
- 12: Fibre seal dia. Ø 18,5 x Ø 12 x 2 (Spare part-nr. 0138900M)
- 13: Strainer (Spare part-nr. 0676800M)
- 14: Socket Spanner (Spare part-nr. 19332000)*
- 15: GROHE TurboStat cartridge 1/2" (Spare part-nr. 47175000)*
- 16: Special Spanner (Spare part-nr. 19377000)*
- 17: Shower system pipe for retrofitting (Spare part-nr. 48053000)*
- 18: Shower system pipe for retrofitting (Spare part-nr. 48054000)*

* Optional accessories

27 922 000 TEMPESTA COSMOPOLITAN 160 SHOWER SYSTEM WITH THERMOSTAT FOR WALL MOUNTING



SPARE PARTS, December 2011 – June 2013

- 1: Handle (Spare part-nr. 47718000)
- 1.1: Cover Cap (Spare part-nr. 6458500M)
- 2: retaining ring (Spare part-nr. 47743000)
- 3: Thermostatic compact cartridge 1/2" (Spare part-nr. 47439000)
- 4: Sound absorber (Spare part-nr. 47398000)
- 5: Water flow (Spare part-nr. 47751000)
- 6: Aquadimmer (Spare part-nr. 12433000)
- 7: Non-return valve (Spare part-nr. 47189000)
- 7.1: Filter (Spare part-nr. 0726400M)
- 7.2: Non-return valve (Spare part-nr. 08565000)
- 7.3: O-Ring Ø17 x Ø2 (Spare part-nr. 0305500M)
- 8: S-union (Spare part-nr. 12662000)
- 9: Non-return valve (Spare part-nr. 08565000)
- 10: Sliding piece (Spare part-nr. 48096000)
- 11: Strainer (Spare part-nr. 0700200M)
- 12: Fibre seal dia. Ø 18,5 x Ø 12 x 2 (Spare part-nr. 0138900M)
- 13: Strainer (Spare part-nr. 0676800M)
- 14: Spacer (Spare part-nr. 27180000)*
- 15: Socket Spanner (Spare part-nr. 19332000)*
- 16: GROHE TurboStat cartridge 1/2" (Spare part-nr. 47175000)*
- 17: Special Spanner (Spare part-nr. 19377000)*
- 18: Shower system pipe for retrofitting (Spare part-nr. 48053000)*
- 19: Shower system pipe for retrofitting (Spare part-nr. 48054000)*

* Optional accessories