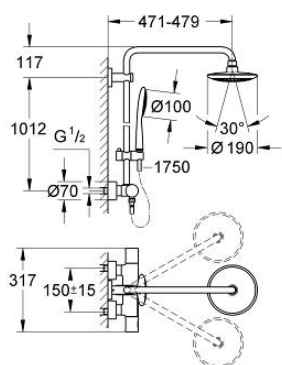


27 428 000 RAINSHOWER SOLO SYSTEM 190 SHOWER SYSTEM WITH THERMOSTAT FOR WALL MOUNTING

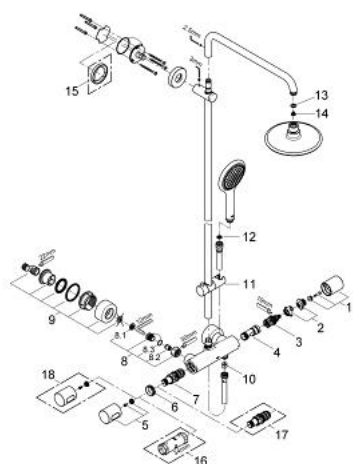


PRODUCT DESCRIPTION

- Colour: Chrome
- Consisting of:
 - horizontal swivable 450 mm projection shower arm
 - exposed thermostatic shower with Aquadimmer function
 - allows change between:
 - head shower Solo (27 438 000)
 - chrome plated spray plate
 - with ball joint
 - rotation angle $\pm 15^\circ$
- hand shower Solo 100 (27 376 000)
- adjustable height via gliding element (12 140 000)
- GROHE EcoJoy 9.5 l/min flow rate
- Silverflex shower hose 1750 mm 1/2" x 1/2" (28 388 000)
- minimum flow rate 7 l/min.
- GROHE Water Saving - Less water, perfect flow
- GROHE DreamSpray perfect spray pattern
- GROHE Long-Life finish
- GROHE CoolTouch
- SpeedClean anti-limescale system
- suitable for instantaneous heaters from 18 kW/h



27 428 000 RAINSHOWER SOLO SYSTEM 190 SHOWER SYSTEM WITH THERMOSTAT FOR WALL MOUNTING



SPARE PARTS, November 2009 – now

- 1: Aquadimmer handle (Spare part-nr. 47804000)
- 2: Temperature limiter (Spare part-nr. 47723000)
- 3: Aquadimmer (Spare part-nr. 12433000)
- 4: Water flow (Spare part-nr. 47751000)
- 5: Handle (Spare part-nr. 47803000)
- 6: retaining ring (Spare part-nr. 47743000)
- 7: Thermostatic compact cartridge 1/2" (Spare part-nr. 47439000)
- 8: Non-return valve (Spare part-nr. 47189000)
- 8.1: Filter (Spare part-nr. 0726400M)
- 8.2: Non-return valve (Spare part-nr. 08565000)
- 8.3: O-Ring Ø17 x Ø2 (Spare part-nr. 0305500M)
- 9: S-union (Spare part-nr. 12693000)
- 10: Non-return valve (Spare part-nr. 08565000)
- 11: Sliding piece (Spare part-nr. 12140000)
- 12: Strainer (Spare part-nr. 0700200M)
- 13: Fibre seal dia. Ø 18,5 x Ø 12 x 2 (Spare part-nr. 0138900M)
- 14: Strainer (Spare part-nr. 0676800M)
- 15: Spacer (Spare part-nr. 27180000)*
- 16: Socket Spanner (Spare part-nr. 19332000)*
- 17: GROHE TurboStat cartridge 1/2" (Spare part-nr. 47175000)*
- 18: Temperature scale handle (Spare part-nr. 47811000)*

* Optional accessories