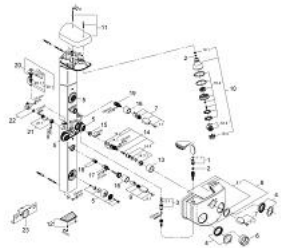


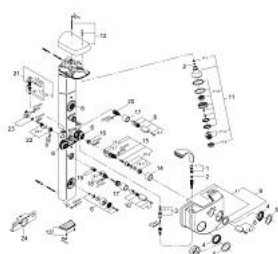
27 202 000 SHOWER SYSTEM 3/4"



SPARE PARTS, June 2008 – now

- 1: Coupling piece (Spare part-nr. 28635XX0)
- 1.1: O-ring dia 11x2 mm (Spare part-nr. 0122400M)
- 2: Strainer (Spare part-nr. 0700200M)
- 3: union connection (Spare part-nr. 45315000)
- 3.1: Non-return valve (Spare part-nr. 08565000)
- 4: Escutcheon (Spare part-nr. 09532000)
- 5: Spray faceplate (Spare part-nr. 45661XX0)
- 6: Installation tool (Spare part-nr. 09813000)
- 7: Handle (Spare part-nr. 47542IP0)
- 7.1: Cover Cap (Spare part-nr. 02490P0M)
- 8: Cover Cap (Spare part-nr. 07093F00)
- 8.1: Replacement kit for seal (Spare part-nr. 45317V00)
- 9: Handle for shut-off valve with economy device (Spare part-nr. 47442IP0)
- 9.1: Cover Cap (Spare part-nr. 02490P0M)
- 10: Head shower (Spare part-nr. 07785000)
- 10.1: Fibre seal dia. Ø 18,5 x Ø 12 x 2 (Spare part-nr. 0138900M)
- 10.2: Spray face (Spare part-nr. 45669000)
- 10.3: Pulsator element (Spare part-nr. 45656XX0)
- 10.4: Disassembling key (Spare part-nr. 45654000)
- 11: Cover Cap (Spare part-nr. 45307F00)
- 12: Cover Cap (Spare part-nr. 45334F00)
- 13: Sleeve (Spare part-nr. 04952000)
- 14: Wax thermo-element-cartridge (Spare part-nr. 47220000)
- 14.1: O-ring dia. 26x2 mm (Spare part-nr. 0120600M)
- 14.2: O-Ring Ø32 x Ø2,5 (Spare part-nr. 0268000M)
- 14.3: Stop ring and regulating nut (Spare part-nr. 47300000)
- 14.3.1: Fixing clamp (Spare part-nr. 0574400M)
- 15: Thermostat seat (Spare part-nr. 47465000)
- 16: Sleeve (Spare part-nr. 47525000)
- 17: Ceramic headpart 3/4", 180° (Spare part-nr. 45885000)
- 18: renewable seat set 3/4" (Spare part-nr. 45052000)
- 19: Aquadimmer (Spare part-nr. 47364000)
- 20: Non-return valve 1/2" (Spare part-nr. 1411600M)
- 20.1: Replacement kit for seal (Spare part-nr. 47303000)
- 20.1.1: Strainer (Spare part-nr. 0299000M)
- 21: Screw joint (Spare part-nr. 45326000)
- 21.1: O-Ring Ø17 x Ø2 (Spare part-nr. 0305500M)
- 22: S-union (Spare part-nr. 07077000)
- 23: installation template (Spare part-nr. 09605000)

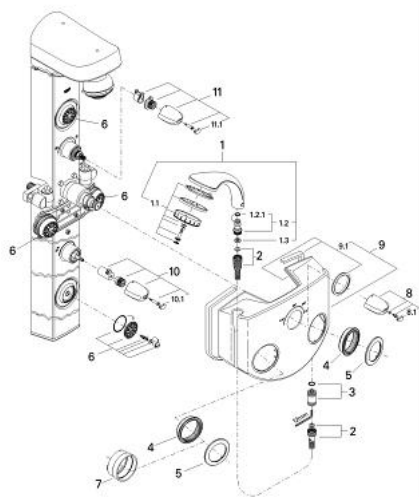
27 202 000 SHOWER SYSTEM 3/4"



SPARE PARTS, June 2007 – June 2008

- 1: Coupling piece (Spare part-nr. 28635XX0)
- 1.1: O-ring dia 11x2 mm (Spare part-nr. 0122400M)
- 2: Strainer (Spare part-nr. 0700200M)
- 3: union connection (Spare part-nr. 45315000)
- 3.1: Non-return valve (Spare part-nr. 08565000)
- 4: retaining ring (Spare part-nr. 09537000)
- 5: Escutcheon (Spare part-nr. 09532000)
- 6: Spray faceplate (Spare part-nr. 45661XX0)
- 7: Installation tool (Spare part-nr. 09813000)
- 8: Handle (Spare part-nr. 47542IP0)
- 8.1: Cover Cap (Spare part-nr. 02490P0M)
- 9: Cover Cap (Spare part-nr. 07093F00)
- 9.1: Replacement kit for seal (Spare part-nr. 45317V00)
- 10: Handle for shut-off valve (Spare part-nr. 47155IP0)
- 10.1: Cover Cap (Spare part-nr. 02490P0M)
- 11: Head shower (Spare part-nr. 07785000)
- 11.1: Fibre seal dia. Ø 18,5 x Ø 12 x 2 (Spare part-nr. 0138900M)
- 11.2: Spray face (Spare part-nr. 45669000)
- 11.3: Pulsator element (Spare part-nr. 45656XX0)
- 11.4: Disassembling key (Spare part-nr. 45654000)
- 12: Cover Cap (Spare part-nr. 45307F00)
- 12.1: set of screws (Spare part-nr. 45308000)
- 13: Cover Cap (Spare part-nr. 45334F00)
- 13.1: Screw (Spare part-nr. 0953600M)
- 14: Sleeve (Spare part-nr. 04952000)
- 15: Wax thermo-element-cartridge (Spare part-nr. 47220000)
- 15.1: O-ring dia. 26x2 mm (Spare part-nr. 0120600M)
- 15.2: O-Ring Ø32 x Ø2,5 (Spare part-nr. 0268000M)
- 15.3: Stop ring and regulating nut (Spare part-nr. 47300000)
- 15.3.1: Fixing clamp (Spare part-nr. 0574400M)
- 16: Thermostat seat (Spare part-nr. 47465000)
- 17: Sleeve (Spare part-nr. 47525000)
- 18: Ceramic headpart 3/4", 180° (Spare part-nr. 45885000)
- 18.1: O-ring (Spare part-nr. 45583000)
- 19: renewable seat set 3/4" (Spare part-nr. 45052000)
- 20: Aquadimmer (Spare part-nr. 47364000)
- 20.1: O-Ring (Spare part-nr. 0305600M)
- 21: Non-return valve 1/2" (Spare part-nr. 1411600M)
- 21.1: Replacement kit for seal (Spare part-nr. 47303000)
- 21.1.1: Strainer (Spare part-nr. 0299000M)
- 22: Screw joint (Spare part-nr. 45326000)
- 22.1: O-Ring Ø17 x Ø2 (Spare part-nr. 0305500M)
- 23: S-union (Spare part-nr. 07077000)
- 23.1: Seal, Ø24,5x 15x 3,5 (Spare part-nr. 0960600M)
- 24: installation template (Spare part-nr. 09605000)

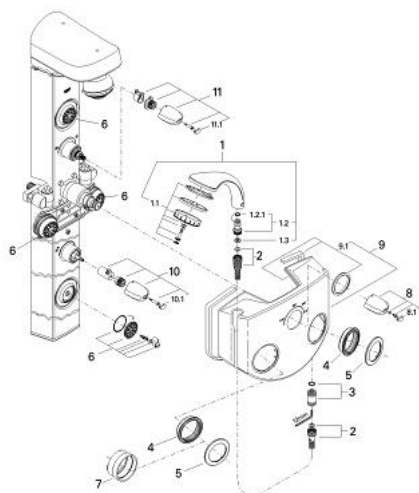
27 202 000 SHOWER SYSTEM 3/4"



SPARE PARTS, January 1999 – June 2007

- 1: Hand shower 2 sprays (Spare part-nr. 28172000)
- 1.1: Coupling piece (Spare part-nr. 28635XX0)
- 1.2: Strainer (Spare part-nr. 0700200M)
- 2: Shower hose (Spare part-nr. 28151000)
- 3: union connection (Spare part-nr. 45315000)
- 3.1: Non-return valve (Spare part-nr. 08565000)
- 4: retaining ring (Spare part-nr. 09537000)
- 5: Escutcheon (Spare part-nr. 09532000)
- 6: Spray faceplate (Spare part-nr. 45661XX0)
- 7: Installation tool (Spare part-nr. 09813000)
- 8: Handle (Spare part-nr. 47541IP0)
- 8.1: Cover Cap (Spare part-nr. 02490P0M)
- 9: Cover Cap (Spare part-nr. 07093F00)
- 9.1: Replacement kit for seal (Spare part-nr. 45317V00)
- 10: Handle for shut-off valve (Spare part-nr. 47155IP0)
- 10.1: Cover Cap (Spare part-nr. 02490P0M)
- 11: Handle (Spare part-nr. 47542IP0)
- 11.1: Cover Cap (Spare part-nr. 02490P0M)
- 12: Head shower (Spare part-nr. 07785000)
- 12.1: Fibre seal dia. Ø 18,5 x Ø 12 x 2 (Spare part-nr. 0138900M)
- 12.2: Spray face (Spare part-nr. 45669000)
- 12.3: Pulsator element (Spare part-nr. 45656XX0)
- 12.4: Disassembling key (Spare part-nr. 45654000)
- 13: Cover Cap (Spare part-nr. 45307F00)
- 13.1: set of screws (Spare part-nr. 45308000)
- 14: Fixing set (Spare part-nr. 45309000)
- 15: Cover Cap (Spare part-nr. 45334F00)
- 15.1: Screw (Spare part-nr. 0953600M)
- 16: Sleeve (Spare part-nr. 04952000)
- 17: Stop ring and regulating nut (Spare part-nr. 47167000)
- 17.1: O-Ring Ø24 x Ø2 (Spare part-nr. 0119600M)
- 18: Wax thermo-element-cartridge (Spare part-nr. 47310000)
- 18.1: O-ring dia. 26x2 mm (Spare part-nr. 0120600M)
- 18.2: O-Ring Ø32 x Ø2,5 (Spare part-nr. 0268000M)
- 19: Thermostat seat (Spare part-nr. 47465000)
- 20: Sleeve (Spare part-nr. 04951000)
- 21: Ceramic headpart 3/4", 180° (Spare part-nr. 45885000)
- 21.1: O-ring (Spare part-nr. 45583000)
- 22: renewable seat set 3/4" (Spare part-nr. 45052000)
- 23: Aquadimmer (Spare part-nr. 47364000)
- 23.1: O-Ring (Spare part-nr. 0305600M)
- 24: Non-return valve 1/2" (Spare part-nr. 1411600M)
- 24.1: Replacement kit for seal (Spare part-nr. 47303000)
- 24.1.1: Strainer (Spare part-nr. 0299000M)
- 25: Screw joint (Spare part-nr. 45326000)

27 202 000 SHOWER SYSTEM 3/4"



SPARE PARTS, January 1999 – January 2000

- 1: Hand shower 2 sprays (Spare part-nr. 28172000)
- 1.1: Coupling piece (Spare part-nr. 28635XX0)
- 1.2: Strainer (Spare part-nr. 0700200M)
- 2: Shower hose (Spare part-nr. 28151000)
- 3: union connection (Spare part-nr. 45315000)
- 3.1: Non-return valve (Spare part-nr. 08565000)
- 4: retaining ring (Spare part-nr. 09537000)
- 5: Escutcheon (Spare part-nr. 09532000)
- 6: Spray faceplate (Spare part-nr. 45661XX0)
- 7: Installation tool (Spare part-nr. 09813000)
- 8: Handle (Spare part-nr. 47541IP0)
- 8.1: Cover Cap (Spare part-nr. 02490P0M)
- 9: Cover Cap (Spare part-nr. 07093F00)
- 9.1: Replacement kit for seal (Spare part-nr. 45317V00)
- 10: Handle for shut-off valve (Spare part-nr. 47155IP0)
- 10.1: Cover Cap (Spare part-nr. 02490P0M)
- 11: Handle (Spare part-nr. 47542IP0)
- 11.1: Cover Cap (Spare part-nr. 02490P0M)
- 12: Head shower Top 4 (Spare part-nr. 28274000)
- 12.1: Fibre seal dia. Ø 18,5 x Ø 12 x 2 (Spare part-nr. 0138900M)
- 12.2: Strainer (Spare part-nr. 0700200M)
- 12.3: Spray face (Spare part-nr. 45669000)
- 12.4: Pulsator element (Spare part-nr. 45656XX0)
- 12.5: Disassembling key (Spare part-nr. 45654000)*
- 13: Cover Cap (Spare part-nr. 45307F00)
- 13.1: set of screws (Spare part-nr. 45308000)
- 14: Fixing set (Spare part-nr. 45309000)
- 15: Cover Cap (Spare part-nr. 45334F00)
- 15.1: Screw (Spare part-nr. 0953600M)
- 16: Sleeve (Spare part-nr. 04952000)
- 17: Stop ring and regulating nut (Spare part-nr. 47167000)
- 17.1: O-Ring Ø24 x Ø2 (Spare part-nr. 0119600M)
- 18: Wax thermo-element-cartridge (Spare part-nr. 47310000)
- 18.1: O-ring dia. 26x2 mm (Spare part-nr. 0120600M)
- 18.2: O-Ring Ø32 x Ø2,5 (Spare part-nr. 0268000M)
- 19: Thermostat seat (Spare part-nr. 47465000)
- 20: Sleeve (Spare part-nr. 04951000)
- 21: Ceramic headpart 3/4", 180° (Spare part-nr. 45885000)
- 21.1: O-ring (Spare part-nr. 45583000)
- 22: renewable seat set 3/4" (Spare part-nr. 45052000)
- 23: Aquadimmer (Spare part-nr. 47364000)
- 23.1: O-Ring (Spare part-nr. 0305600M)
- 24: Non-return valve 1/2" (Spare part-nr. 1411600M)
- 24.1: Replacement kit for seal (Spare part-nr. 47303000)
- 24.1.1: Strainer (Spare part-nr. 0299000M)